

Product datasheet for **TA501626BM**

EPHX2 Mouse Monoclonal Antibody (HRP conjugated) [Clone ID: OTI1A6]

Product data:

Product Type:	Primary Antibodies
Clone Name:	OTI1A6
Applications:	IF, IHC, WB
Recommended Dilution:	WB 1:500~2000, IHC 1:150, IF 1:100
Reactivity:	Human
Host:	Mouse
Isotype:	IgG1
Clonality:	Monoclonal
Immunogen:	Full length human recombinant protein of human EPHX2 (NP_001970) produced in HEK293T cell.
Formulation:	PBS (pH 7.3) containing 1% BSA, 50% glycerol.
Concentration:	0.5 mg/ml
Purification:	Purified from mouse ascites fluids or tissue culture supernatant by affinity chromatography (protein A/G)
Conjugation:	HRP
Storage:	Store at -20°C as received.
Stability:	Stable for 12 months from date of receipt.
Predicted Protein Size:	62.4 kDa
Gene Name:	epoxide hydrolase 2
Database Link:	NP_001970 Entrez Gene 2053 Human P34913
Background:	This gene encodes a member of the epoxide hydrolase family. The protein, found in both the cytosol and peroxisomes, binds to specific epoxides and converts them to the corresponding dihydrodiols. Mutations in this gene have been associated with familial hypercholesterolemia. Alternate transcriptional splice variants of this gene have been observed but have not been thoroughly characterized. [provided by RefSeq]

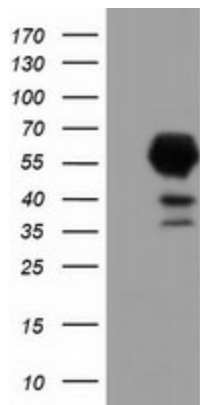


[View online »](#)

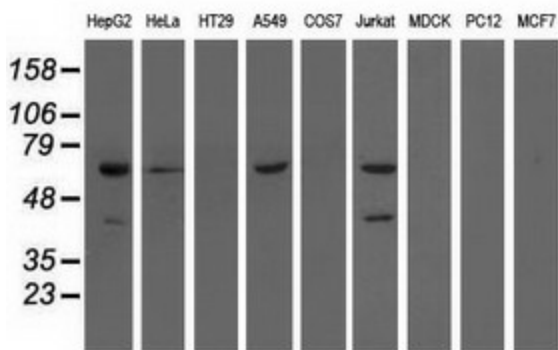
Synonyms: CEH; SEH

Protein Pathways: Arachidonic acid metabolism, Metabolic pathways

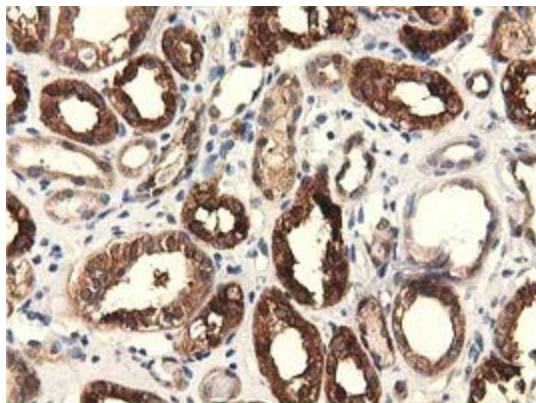
Product images:



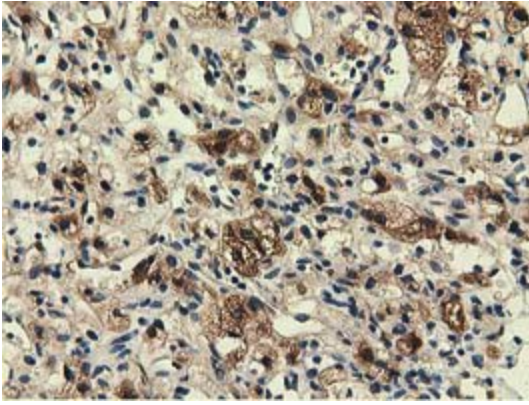
HEK293T cells were transfected with the pCMV6-ENTRY control (Cat# [PS100001], Left lane) or pCMV6-ENTRY EPHX2 (Cat# [RC202489], Right lane) cDNA for 48 hrs and lysed. Equivalent amounts of cell lysates (5 ug per lane) were separated by SDS-PAGE and immunoblotted with anti-EPHX2(Cat# [TA501626]). Positive lysates [LY419612] (100ug) and [LC419612] (20ug) can be purchased separately from OriGene.



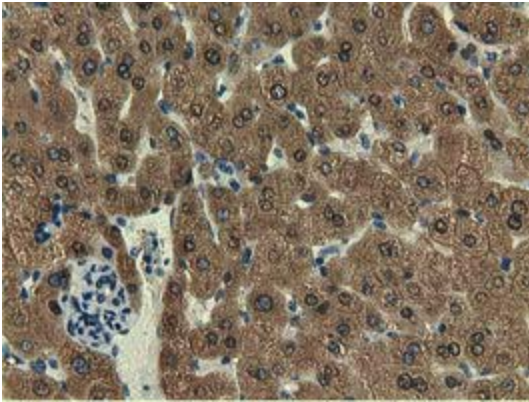
Western blot analysis of extracts (35ug) from 9 different cell lines by using anti-EPHX2 monoclonal antibody.



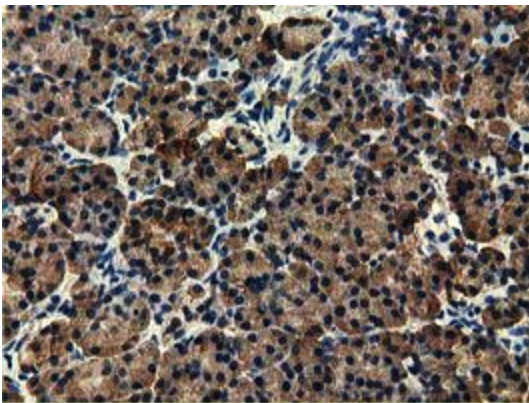
Immunohistochemical staining of paraffin-embedded Human Kidney tissue within the normal limits using anti-EPHX2 mouse monoclonal antibody. (Heat-induced epitope retrieval by 10mM citric buffer, pH6.0, 100°C for 10min, [TA501626])



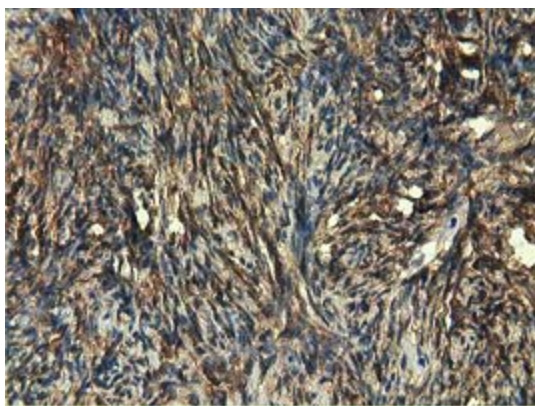
Immunohistochemical staining of paraffin-embedded Carcinoma of Human kidney tissue using anti-EPHX2 mouse monoclonal antibody. (Heat-induced epitope retrieval by 10mM citric buffer, pH6.0, 100°C for 10min, [TA501626])



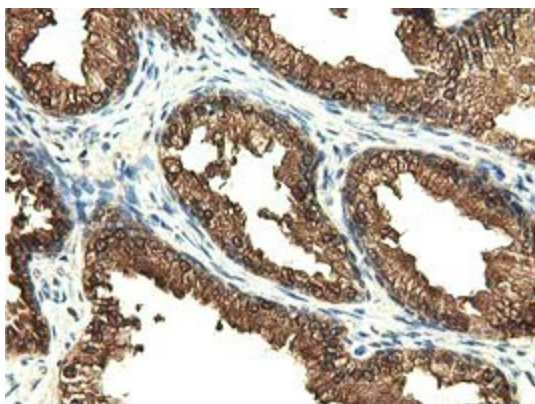
Immunohistochemical staining of paraffin-embedded Human liver tissue within the normal limits using anti-EPHX2 mouse monoclonal antibody. (Heat-induced epitope retrieval by 10mM citric buffer, pH6.0, 100°C for 10min, [TA501626])



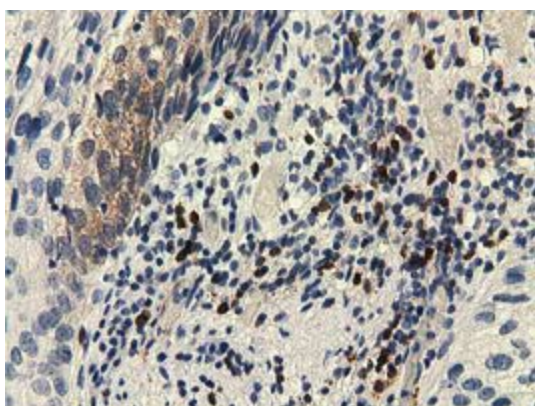
Immunohistochemical staining of paraffin-embedded Human pancreas tissue within the normal limits using anti-EPHX2 mouse monoclonal antibody. (Heat-induced epitope retrieval by 10mM citric buffer, pH6.0, 100°C for 10min, [TA501626])



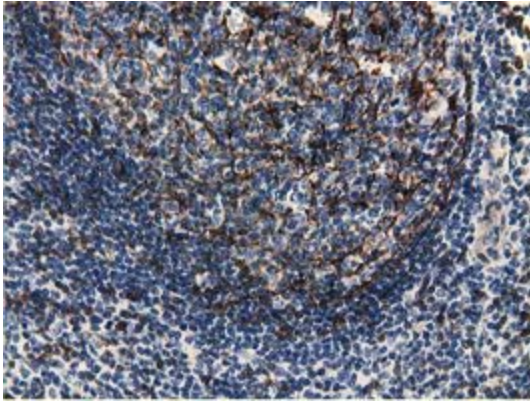
Immunohistochemical staining of paraffin-embedded Human endometrium tissue within the normal limits using anti-EPHX2 mouse monoclonal antibody. (Heat-induced epitope retrieval by 10mM citric buffer, pH6.0, 100°C for 10min, [TA501626])



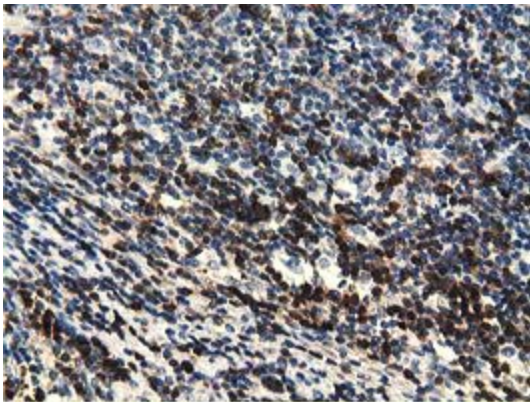
Immunohistochemical staining of paraffin-embedded Human prostate tissue within the normal limits using anti-EPHX2 mouse monoclonal antibody. (Heat-induced epitope retrieval by 10mM citric buffer, pH6.0, 100°C for 10min, [TA501626])



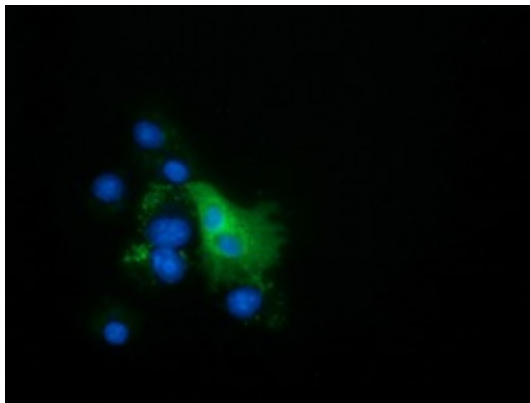
Immunohistochemical staining of paraffin-embedded Carcinoma of Human bladder tissue using anti-EPHX2 mouse monoclonal antibody. (Heat-induced epitope retrieval by 10mM citric buffer, pH6.0, 100°C for 10min, [TA501626])



Immunohistochemical staining of paraffin-embedded Human lymph node tissue within the normal limits using anti-EPHX2 mouse monoclonal antibody. (Heat-induced epitope retrieval by 10mM citric buffer, pH6.0, 100°C for 10min, [TA501626])



Immunohistochemical staining of paraffin-embedded Human lymphoma tissue using anti-EPHX2 mouse monoclonal antibody. (Heat-induced epitope retrieval by 10mM citric buffer, pH6.0, 100°C for 10min, [TA501626])



Anti-EPHX2 mouse monoclonal antibody ([TA501626]) immunofluorescent staining of COS7 cells transiently transfected by pCMV6-ENTRY EPX2 ([RC202489]).