

Product datasheet for **TA501623BM**

FSH beta (FSHB) Mouse Monoclonal Antibody (HRP conjugated) [Clone ID: OTI4E10]

Product data:

Product Type:	Primary Antibodies
Clone Name:	OTI4E10
Applications:	FC, WB
Recommended Dilution:	WB 1:500, FLOW 1:100
Reactivity:	Human, Mouse
Host:	Mouse
Isotype:	IgG1
Clonality:	Monoclonal
Immunogen:	Full length human recombinant protein of human FSHB (NP_001018090) produced in HEK293T cell.
Formulation:	PBS (pH 7.3) containing 1% BSA, 50% glycerol.
Concentration:	0.5 mg/ml
Purification:	Purified from mouse ascites fluids or tissue culture supernatant by affinity chromatography (protein A/G)
Conjugation:	HRP
Storage:	Store at -20°C as received.
Stability:	Stable for 12 months from date of receipt.
Predicted Protein Size:	12.4 kDa
Gene Name:	follicle stimulating hormone subunit beta
Database Link:	NP_001018090 Entrez Gene 2488 Human P01225
Background:	The pituitary glycoprotein hormone family includes follicle-stimulating hormone, luteinizing hormone, chorionic gonadotropin, and thyroid-stimulating hormone. All of these glycoproteins consist of an identical alpha subunit and a hormone-specific beta subunit. This gene encodes the beta subunit of follicle-stimulating hormone. In conjunction with luteinizing hormone, follicle-stimulating hormone induces egg and sperm production. Alternative splicing results in two transcript variants encoding the same protein. [provided by RefSeq]



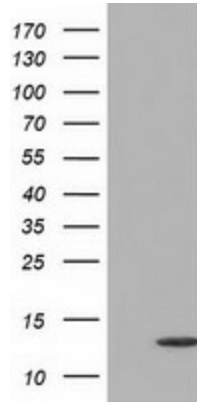
[View online »](#)

Synonyms: HH24

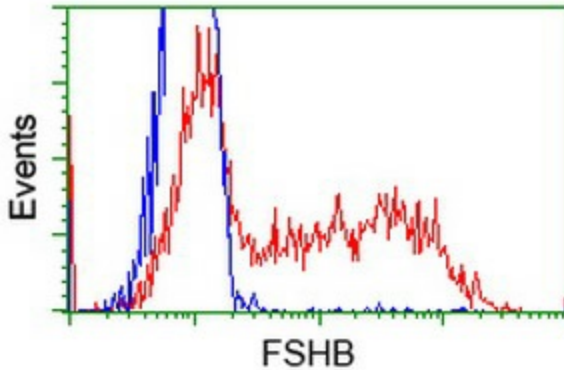
Protein Families: Druggable Genome, Secreted Protein

Protein Pathways: GnRH signaling pathway, Neuroactive ligand-receptor interaction

Product images:



HEK293T cells were transfected with the pCMV6-ENTRY control (Left lane) or pCMV6-ENTRY FSHB ([RC214616], Right lane) cDNA for 48 hrs and lysed. Equivalent amounts of cell lysates (5 ug per lane) were separated by SDS-PAGE and immunoblotted with anti-FSHB. Positive lysates [LY400397] (100ug) and [LC400397] (20ug) can be purchased separately from OriGene.



HEK293T cells transfected with either [RC214616] overexpress plasmid (Red) or empty vector control plasmid (Blue) were immunostained by anti-FSHB antibody ([TA501623]), and then analyzed by flow cytometry.