

Product datasheet for **TA501620S**

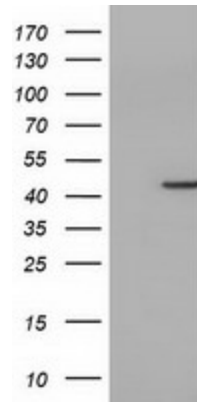
CBWD1 Mouse Monoclonal Antibody [Clone ID: OTI1B3]

Product data:

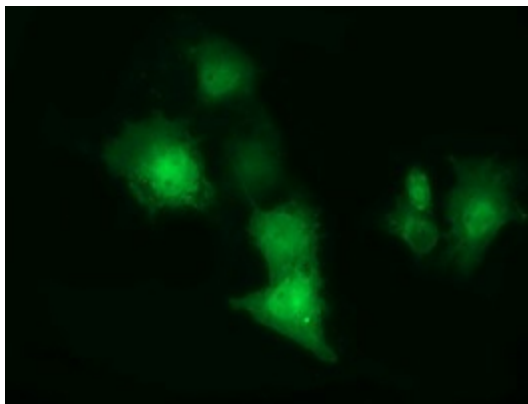
Product Type:	Primary Antibodies
Clone Name:	OTI1B3
Applications:	FC, IF, WB
Recommended Dilution:	WB 1:2000, IF 1:100, FLOW 1:100
Reactivity:	Human
Host:	Mouse
Isotype:	IgG2a
Clonality:	Monoclonal
Immunogen:	Full length human recombinant protein of human CBWD1 (NP_060961) produced in HEK293T cell.
Formulation:	PBS (pH 7.3) containing 1% BSA, 50% glycerol and 0.02% sodium azide.
Concentration:	0.55 mg/ml
Purification:	Purified from mouse ascites fluids or tissue culture supernatant by affinity chromatography (protein A/G)
Conjugation:	Unconjugated
Storage:	Store at -20°C as received.
Stability:	Stable for 12 months from date of receipt.
Predicted Protein Size:	43.9 kDa
Gene Name:	COBW domain containing 1
Database Link:	NP_060961 Entrez Gene 55871 Human Q9BRT8
Synonyms:	COBP



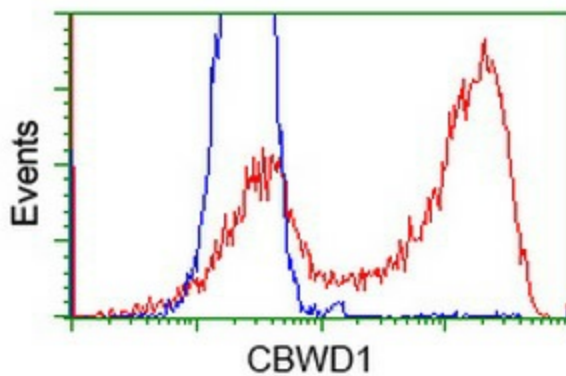
[View online »](#)

Product images:


HEK293T cells were transfected with the pCMV6-ENTRY control (Left lane) or pCMV6-ENTRY CBWD1 ([RC222790], Right lane) cDNA for 48 hrs and lysed. Equivalent amounts of cell lysates (5 ug per lane) were separated by SDS-PAGE and immunoblotted with anti-CBWD1. Positive lysates [LY402692] (100ug) and [LC402692] (20ug) can be purchased separately from OriGene.



Anti-CBWD1 mouse monoclonal antibody ([TA501620]) immunofluorescent staining of COS7 cells transiently transfected by pCMV6-ENTRY CBWD1 ([RC222790]).



HEK293T cells transfected with either [RC222790] overexpress plasmid (Red) or empty vector control plasmid (Blue) were immunostained by anti-CBWD1 antibody ([TA501620]), and then analyzed by flow cytometry.