

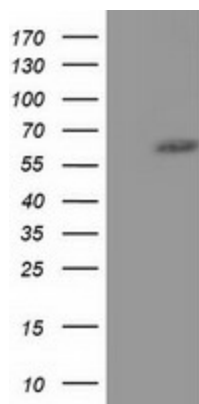
Product datasheet for **TA501619M**

KLHL2 Mouse Monoclonal Antibody [Clone ID: OTI8D8]

Product data:

Product Type:	Primary Antibodies
Clone Name:	OTI8D8
Applications:	WB
Recommended Dilution:	WB 1:500
Reactivity:	Human, Mouse, Rat
Host:	Mouse
Isotype:	IgG2b
Clonality:	Monoclonal
Immunogen:	Human recombinant protein fragment corresponding to amino acids 1-100 and 494-593 of human KLHL2 (NP_009177) produced in HEK293T cell.
Formulation:	PBS (pH 7.3) containing 1% BSA, 50% glycerol and 0.02% sodium azide.
Concentration:	1 mg/ml
Purification:	Purified from mouse ascites fluids or tissue culture supernatant by affinity chromatography (protein A/G)
Conjugation:	Unconjugated
Storage:	Store at -20°C as received.
Stability:	Stable for 12 months from date of receipt.
Predicted Protein Size:	65.8 kDa
Gene Name:	kelch like family member 2
Database Link:	NP_009177 Entrez Gene 77113 Mouse Entrez Gene 290692 Rat Entrez Gene 11275 Human O95198
Synonyms:	ABP-KELCH; MAV; MAYVEN

[View online »](#)

Product images:


HEK293T cells were transfected with the pCMV6-ENTRY control (Left lane) or pCMV6-ENTRY KLHL2 ([RC205347], Right lane) cDNA for 48 hrs and lysed. Equivalent amounts of cell lysates (5 ug per lane) were separated by SDS-PAGE and immunoblotted with anti-KLHL2. Positive lysates [LY402119] (100ug) and [LC402119] (20ug) can be purchased separately from OriGene.