

## Product datasheet for **TA501618BM**

### **KLHL2 Mouse Monoclonal Antibody (HRP conjugated) [Clone ID: OTI10C12]**

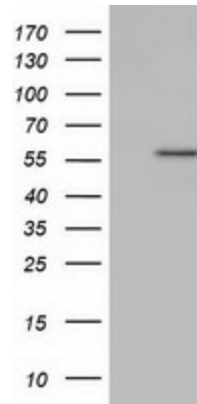
#### **Product data:**

|                         |   |
|-------------------------|---|
| Product Type:           | Primary Antibodies  |
| Clone Name:             | OTI10C12  |
| Applications:           | FC, IF, WB  |
| Recommended Dilution:   | WB 1:500, IF 1:100, FLOW 1:100  |
| Reactivity:             | Human, Mouse, Rat   |
| Host:                   | Mouse   |
| Isotype:                | IgG1  |
| Clonality:              | Monoclonal  |
| Immunogen:              | Human recombinant protein fragment corresponding to amino acids 1-100 and 494-593 of human KLHL2 (NP_009177) produced in HEK293T cell.  |
| Formulation:            | PBS (pH 7.3) containing 1% BSA, 50% glycerol.   |
| Concentration:          | 0.5 mg/ml   |
| Purification:           | Purified from mouse ascites fluids or tissue culture supernatant by affinity chromatography (protein A/G)   |
| Conjugation:            | HRP   |
| Storage:                | Store at -20°C as received.   |
| Stability:              | Stable for 12 months from date of receipt.  |
| Predicted Protein Size: | 65.8 kDa  |
| Gene Name:              | kelch like family member 2  |
| Database Link:          | <a href="#">NP_009177</a><br><a href="#">Entrez Gene 77113 Mouse</a> <a href="#">Entrez Gene 290692 Rat</a> <a href="#">Entrez Gene 11275 Human</a><br><a href="#">O95198</a> |
| Synonyms:               | ABP-KELCH; MAV; MAYVEN  |

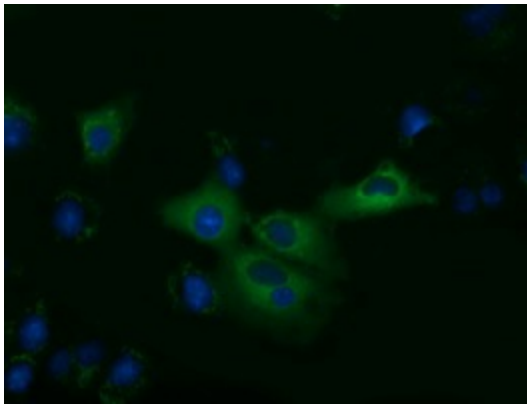


[View online »](#)

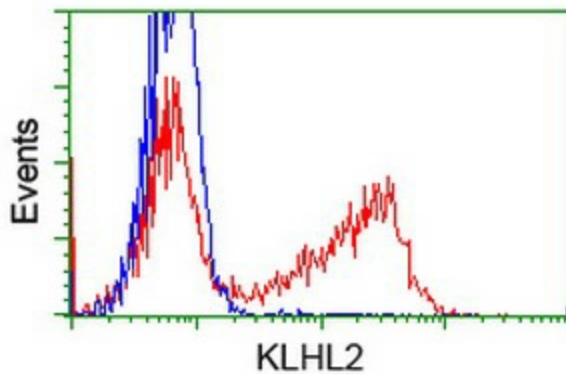
## Product images:



HEK293T cells were transfected with the pCMV6-ENTRY control (Left lane) or pCMV6-ENTRY KLHL2 ([RC205347], Right lane) cDNA for 48 hrs and lysed. Equivalent amounts of cell lysates (5 ug per lane) were separated by SDS-PAGE and immunoblotted with anti-KLHL2. Positive lysates [LY402119] (100ug) and [LC402119] (20ug) can be purchased separately from OriGene.



Anti-KLHL2 mouse monoclonal antibody ([TA501618]) immunofluorescent staining of COS7 cells transiently transfected by pCMV6-ENTRY KLHL2 ([RC205347]).



HEK293T cells transfected with either [RC205347] overexpress plasmid (Red) or empty vector control plasmid (Blue) were immunostained by anti-KLHL2 antibody ([TA501618]), and then analyzed by flow cytometry.