

## Product datasheet for **TA501616M**

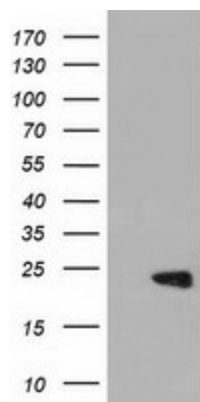
### **PBP (PEBP1) Mouse Monoclonal Antibody [Clone ID: OTI2D4]**

#### **Product data:**

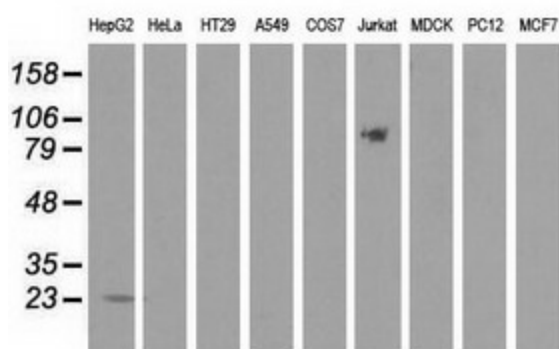
Product Type:	Primary Antibodies
Clone Name:	OTI2D4
Applications:	IF, WB
Recommended Dilution:	WB 1:2000 IF 1:250
Reactivity:	Human, Mouse
Host:	Mouse
Isotype:	IgG1
Clonality:	Monoclonal
Immunogen:	Full length human recombinant protein of human PEBP1 (NP_002558) produced in HEK293T cell.
Formulation:	PBS (pH 7.3) containing 1% BSA, 50% glycerol and 0.02% sodium azide.
Concentration:	0.35 mg/ml
Purification:	Purified from mouse ascites fluids or tissue culture supernatant by affinity chromatography (protein A/G)
Conjugation:	Unconjugated
Storage:	Store at -20°C as received.
Stability:	Stable for 12 months from date of receipt.
Predicted Protein Size:	21.0 kDa
Gene Name:	phosphatidylethanolamine binding protein 1
Database Link:	<a href="#">NP_002558</a> <a href="#">Entrez Gene 23980 Mouse</a> <a href="#">Entrez Gene 5037 Human</a> <a href="#">P30086</a>
Background:	Binds ATP, opioids and phosphatidylethanolamine. Has lower affinity for phosphatidylinositol and phosphatidylcholine. Serine protease inhibitor which inhibits thrombin, neuropsin and chymotrypsin but not trypsin, tissue type plasminogen activator and elastase
Synonyms:	HCNP; HCNPPp; HEL-210; HEL-S-34; HEL-S-96; PBP; PEBP; PEBP-1; RKIP


[View online »](#)

## Product images:



HEK293T cells were transfected with the pCMV6-ENTRY control (Cat# [PS100001], Left lane) or pCMV6-ENTRY PEBP1 (Cat# [RC206355], Right lane) cDNA for 48 hrs and lysed. Equivalent amounts of cell lysates (5 ug per lane) were separated by SDS-PAGE and immunoblotted with anti-PEBP1 (Cat# [TA501616]). Positive lysates [LY400913] (100ug) and [LC400913] (20ug) can be purchased separately from OriGene.



Western blot analysis of extracts (35ug) from 9 different cell lines by using anti-PEBP1 monoclonal antibody.