

Product datasheet for **TA501611S**

CBWD1 Mouse Monoclonal Antibody [Clone ID: OTI5H2]

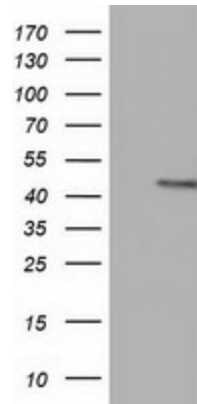
Product data:

| | |
|-------------------------|---|
| Product Type: | Primary Antibodies |
| Clone Name: | OTI5H2 |
| Applications: | FC, IF, WB |
| Recommended Dilution: | WB 1:2000, IF 1:100, FLOW 1:100 |
| Reactivity: | Human |
| Host: | Mouse |
| Isotype: | IgG1 |
| Clonality: | Monoclonal |
| Immunogen: | Full length human recombinant protein of human CBWD1 (NP_060961) produced in HEK293T cell. |
| Formulation: | PBS (pH 7.3) containing 1% BSA, 50% glycerol and 0.02% sodium azide. |
| Concentration: | 0.46 mg/ml |
| Purification: | Purified from mouse ascites fluids or tissue culture supernatant by affinity chromatography (protein A/G) |
| Conjugation: | Unconjugated |
| Storage: | Store at -20°C as received. |
| Stability: | Stable for 12 months from date of receipt. |
| Predicted Protein Size: | 43.9 kDa |
| Gene Name: | COBW domain containing 1 |
| Database Link: | NP_060961 Entrez Gene 55871 Human Q9BRT8 |
| Synonyms: | COBP |

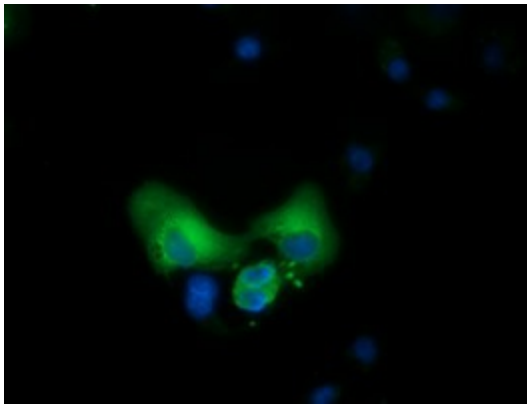


[View online »](#)

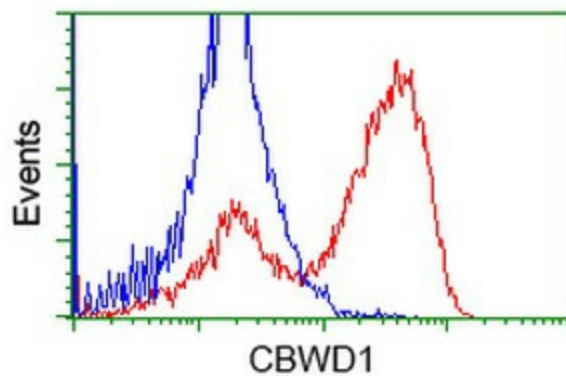
Product images:



HEK293T cells were transfected with the pCMV6-ENTRY control (Left lane) or pCMV6-ENTRY CBWD1 ([RC222790], Right lane) cDNA for 48 hrs and lysed. Equivalent amounts of cell lysates (5 ug per lane) were separated by SDS-PAGE and immunoblotted with anti-CBWD1. Positive lysates [LY402692] (100ug) and [LC402692] (20ug) can be purchased separately from OriGene.



Anti-CBWD1 mouse monoclonal antibody ([TA501611]) immunofluorescent staining of COS7 cells transiently transfected by pCMV6-ENTRY CBWD1 ([RC222790]).



HEK293T cells transfected with either [RC222790] overexpress plasmid (Red) or empty vector control plasmid (Blue) were immunostained by anti-CBWD1 antibody ([TA501611]), and then analyzed by flow cytometry.