

Product datasheet for **TA501609M**

CBWD1 Mouse Monoclonal Antibody [Clone ID: OTI4D4]

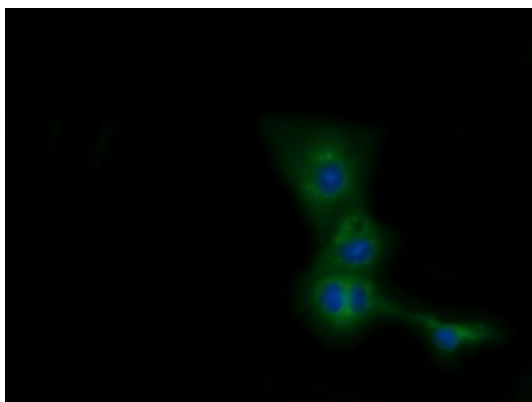
Product data:

Product Type:	Primary Antibodies
Clone Name:	OTI4D4
Applications:	FC, IF, IHC, WB
Recommended Dilution:	WB 1:500~2000, IHC 1:150, IF 1:100, FLOW 1:100
Reactivity:	Human, Dog, Rat, Monkey
Host:	Mouse
Isotype:	IgG2b
Clonality:	Monoclonal
Immunogen:	Full length human recombinant protein of human CBWD1 (NP_060961) produced in HEK293T cell.
Formulation:	PBS (pH 7.3) containing 1% BSA, 50% glycerol and 0.02% sodium azide.
Concentration:	0.99 mg/ml
Purification:	Purified from mouse ascites fluids or tissue culture supernatant by affinity chromatography (protein A/G)
Conjugation:	Unconjugated
Storage:	Store at -20°C as received.
Stability:	Stable for 12 months from date of receipt.
Predicted Protein Size:	43.9 kDa
Gene Name:	COBW domain containing 1
Database Link:	NP_060961 Entrez Gene 171057 Rat Entrez Gene 698333 Monkey Entrez Gene 55871 Human Q9BRT8
Synonyms:	COBP

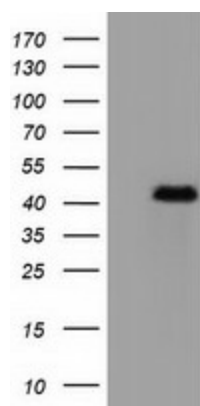


[View online »](#)

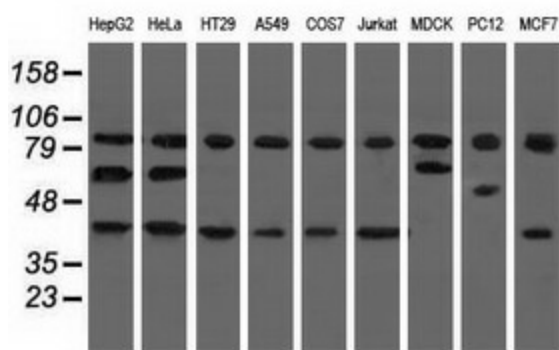
Product images:



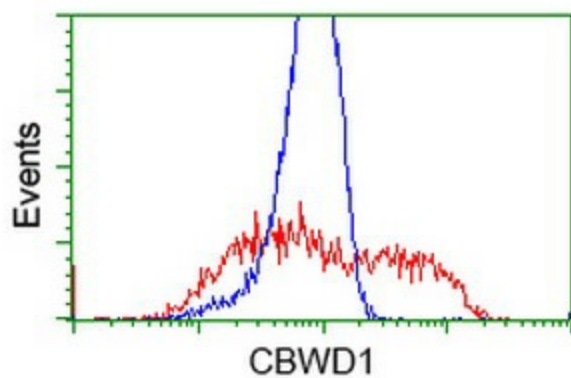
Anti-CBWD1 mouse monoclonal antibody ([TA501609]) immunofluorescent staining of COS7 cells transiently transfected by pCMV6-ENTRY CBWD1 ([RC222790]).



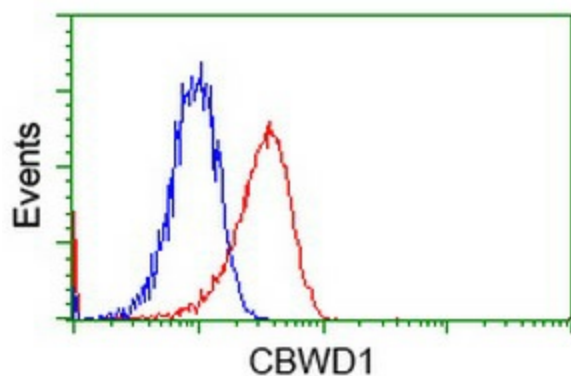
HEK293T cells were transfected with the pCMV6-ENTRY control (Left lane) or pCMV6-ENTRY CBWD1 ([RC222790], Right lane) cDNA for 48 hrs and lysed. Equivalent amounts of cell lysates (5 ug per lane) were separated by SDS-PAGE and immunoblotted with anti-CBWD1. Positive lysates [LY402692] (100ug) and [LC402692] (20ug) can be purchased separately from OriGene.



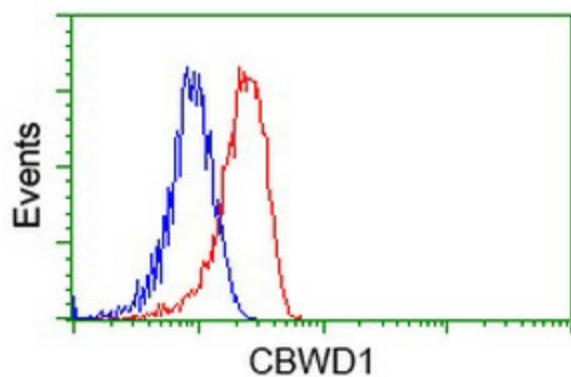
Western blot analysis of extracts (35ug) from 9 different cell lines by using anti-CBWD1 monoclonal antibody.



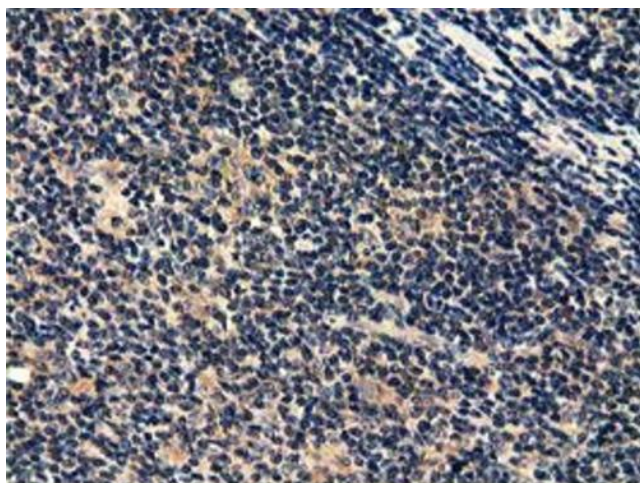
HEK293T cells transfected with either [RC222790] overexpress plasmid (Red) or empty vector control plasmid (Blue) were immunostained by anti-CBWD1 antibody ([TA501609]), and then analyzed by flow cytometry.



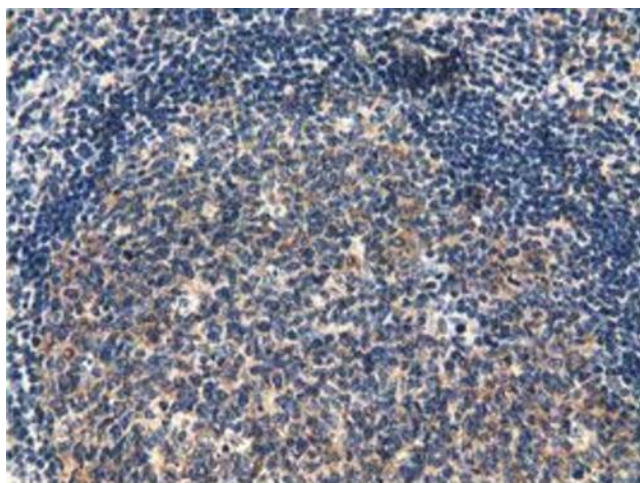
Flow cytometric Analysis of Jurkat cells, using anti-CBWD1 antibody ([TA501609]), (Red), compared to a nonspecific negative control antibody (TA50011), (Blue).



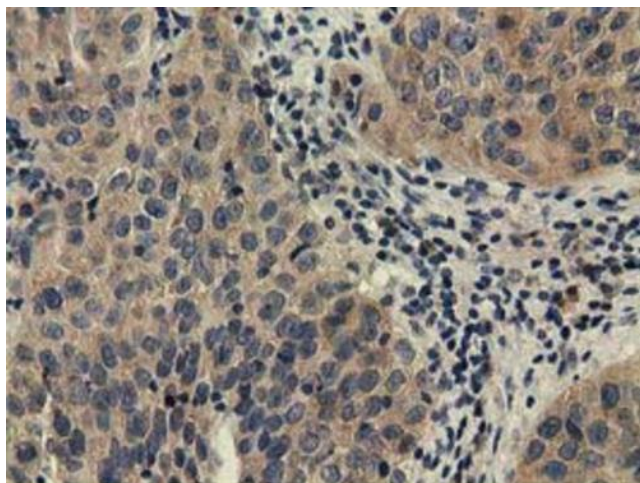
Flow cytometric Analysis of Hela cells, using anti-CBWD1 antibody ([TA501609]), (Red), compared to a nonspecific negative control antibody (TA50011), (Blue).



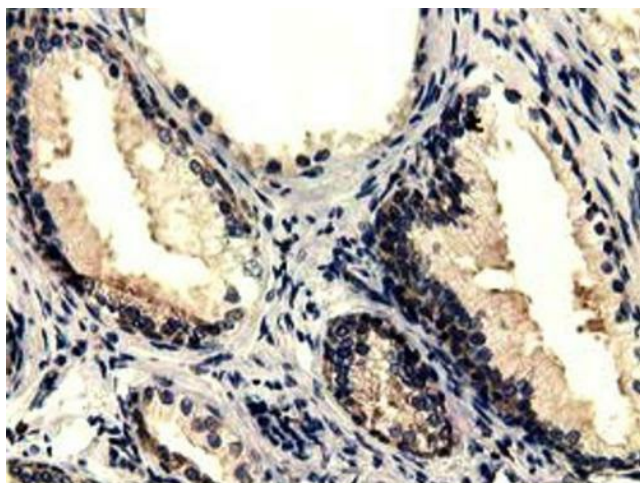
Immunohistochemical staining of paraffin-embedded Human lymphoma tissue using anti-CBWD1 mouse monoclonal antibody. Heat-induced epitope retrieval by EDTA solution buffer pH 8.0 at 120°C for 3 min.



Immunohistochemical staining of paraffin-embedded Human lymph node tissue within the normal limits using anti-CBWD1 mouse monoclonal antibody. Heat-induced epitope retrieval by EDTA solution buffer pH 8.0 at 120°C for 3 min.



Immunohistochemical staining of paraffin-embedded Carcinoma of Human bladder tissue using anti-CBWD1 mouse monoclonal antibody. Heat-induced epitope retrieval by EDTA solution buffer pH 8.0 at 120°C for 3 min.



Immunohistochemical staining of paraffin-embedded Human prostate tissue within the normal limits using anti-CBWD1 mouse monoclonal antibody. Heat-induced epitope retrieval by EDTA solution buffer pH 8.0 at 120°C for 3 min.