

## Product datasheet for **TA501600**

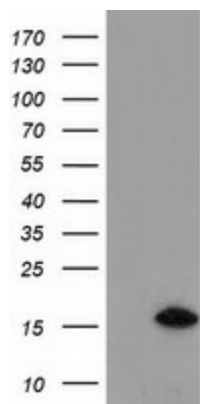
### **C15orf40 Mouse Monoclonal Antibody [Clone ID: OTI1D8]**

#### **Product data:**

<b>Product Type:</b>	Primary Antibodies
<b>Clone Name:</b>	OTI1D8
<b>Applications:</b>	WB
<b>Recommended Dilution:</b>	WB 1:2000
<b>Reactivity:</b>	Human, Mouse, Rat
<b>Host:</b>	Mouse
<b>Isotype:</b>	IgG1
<b>Clonality:</b>	Monoclonal
<b>Immunogen:</b>	Full length human recombinant protein of human C15orf40 (NP_653198) produced in HEK293T cell.
<b>Formulation:</b>	PBS (pH 7.3) containing 1% BSA, 50% glycerol and 0.02% sodium azide.
<b>Concentration:</b>	0.61 mg/ml
<b>Purification:</b>	Purified from mouse ascites fluids or tissue culture supernatant by affinity chromatography (protein A/G)
<b>Conjugation:</b>	Unconjugated
<b>Storage:</b>	Store at -20°C as received.
<b>Stability:</b>	Stable for 12 months from date of receipt.
<b>Predicted Protein Size:</b>	16.2 kDa
<b>Gene Name:</b>	chromosome 15 open reading frame 40
<b>Database Link:</b>	<a href="#">NP_653198</a> <a href="#">Entrez Gene 123207 Human</a> <a href="#">Q8WUR7</a>
<b>Synonyms:</b>	FLJ33606; MGC29937



[View online »](#)

**Product images:**

HEK293T cells were transfected with the pCMV6-ENTRY control (Left lane) or pCMV6-ENTRY C15orf40 ([RC205773], Right lane) cDNA for 48 hrs and lysed. Equivalent amounts of cell lysates (5 ug per lane) were separated by SDS-PAGE and immunoblotted with anti-C15orf40. Positive lysates [LY408238] (100ug) and [LC408238] (20ug) can be purchased separately from OriGene.