

## Product datasheet for **TA501598S**

### **MOBKL2B (MOB3B) Mouse Monoclonal Antibody [Clone ID: OTI3E11]**

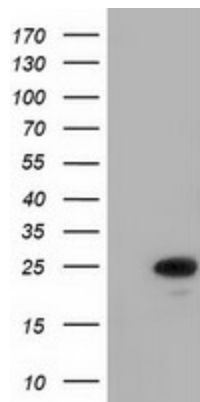
#### **Product data:**

|                                |                                                                                                                                                                                                                                                                                                                                                                |
|--------------------------------|----------------------------------------------------------------------------------------------------------------------------------------------------------------------------------------------------------------------------------------------------------------------------------------------------------------------------------------------------------------|
| <b>Product Type:</b>           | Primary Antibodies                                                                                                                                                                                                                                                                                                                                             |
| <b>Clone Name:</b>             | OTI3E11                                                                                                                                                                                                                                                                                                                                                        |
| <b>Applications:</b>           | FC, IF, WB                                                                                                                                                                                                                                                                                                                                                     |
| <b>Recommended Dilution:</b>   | WB 1:2000, IF 1:100, FLOW 1:100                                                                                                                                                                                                                                                                                                                                |
| <b>Reactivity:</b>             | Human, Mouse, Rat                                                                                                                                                                                                                                                                                                                                              |
| <b>Host:</b>                   | Mouse                                                                                                                                                                                                                                                                                                                                                          |
| <b>Isotype:</b>                | IgG1                                                                                                                                                                                                                                                                                                                                                           |
| <b>Clonality:</b>              | Monoclonal                                                                                                                                                                                                                                                                                                                                                     |
| <b>Immunogen:</b>              | Full length human recombinant protein of human MOBKL2B (NP_079037) produced in HEK293T cell.                                                                                                                                                                                                                                                                   |
| <b>Formulation:</b>            | PBS (pH 7.3) containing 1% BSA, 50% glycerol and 0.02% sodium azide.                                                                                                                                                                                                                                                                                           |
| <b>Concentration:</b>          | 0.55 mg/ml                                                                                                                                                                                                                                                                                                                                                     |
| <b>Purification:</b>           | Purified from mouse ascites fluids or tissue culture supernatant by affinity chromatography (protein A/G)                                                                                                                                                                                                                                                      |
| <b>Conjugation:</b>            | Unconjugated                                                                                                                                                                                                                                                                                                                                                   |
| <b>Storage:</b>                | Store at -20°C as received.                                                                                                                                                                                                                                                                                                                                    |
| <b>Stability:</b>              | Stable for 12 months from date of receipt.                                                                                                                                                                                                                                                                                                                     |
| <b>Predicted Protein Size:</b> | 25.3 kDa                                                                                                                                                                                                                                                                                                                                                       |
| <b>Gene Name:</b>              | MOB kinase activator 3B                                                                                                                                                                                                                                                                                                                                        |
| <b>Database Link:</b>          | <a href="#">NP_079037</a><br><a href="#">Entrez Gene 214944 Mouse</a> <a href="#">Entrez Gene 79817 Human</a><br><a href="#">Q86TA1</a>                                                                                                                                                                                                                        |
| <b>Background:</b>             | The protein encoded by this gene shares similarity with the yeast Mob1 protein. Yeast Mob1 binds Mps1p, a protein kinase essential for spindle pole body duplication and mitotic checkpoint regulation. This gene is located on the opposite strand as the interferon kappa precursor (IFNK) gene. [provided by RefSeq]. COMPLETENESS: complete on the 3' end. |
| <b>Synonyms:</b>               | C9orf35; MOB1D; MOBKL2B                                                                                                                                                                                                                                                                                                                                        |

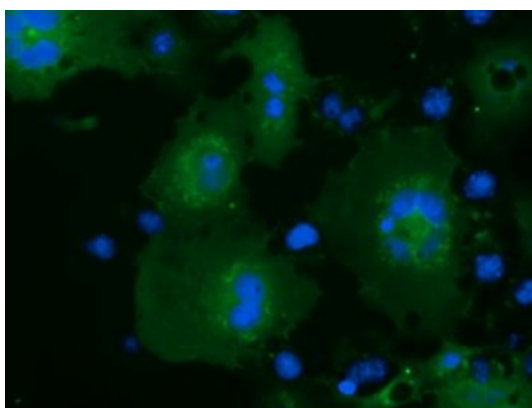


[View online »](#)

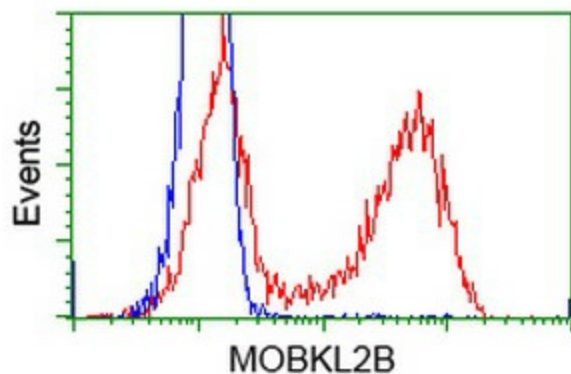
## Product images:



HEK293T cells were transfected with the pCMV6-ENTRY control (Left lane) or pCMV6-ENTRY MOBKL2B ([RC205977], Right lane) cDNA for 48 hrs and lysed. Equivalent amounts of cell lysates (5 ug per lane) were separated by SDS-PAGE and immunoblotted with anti-MOBKL2B. Positive lysates [LY403025] (100ug) and [LC403025] (20ug) can be purchased separately from OriGene.



Anti-MOBKL2B mouse monoclonal antibody ([TA501598]) immunofluorescent staining of COS7 cells transiently transfected by pCMV6-ENTRY MOBKL2B ([RC205977]).



HEK293T cells transfected with either [RC205977] overexpress plasmid (Red) or empty vector control plasmid (Blue) were immunostained by anti-MOBKL2B antibody ([TA501598]), and then analyzed by flow cytometry.