

Product datasheet for **TA501595AM**

TUBA3E Mouse Monoclonal Antibody (Biotin conjugated) [Clone ID: OTI2B4]

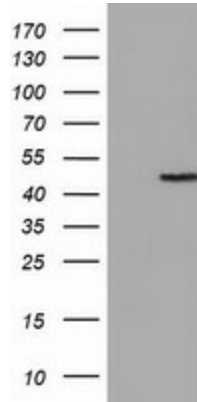
Product data:

Product Type:	Primary Antibodies
Clone Name:	OTI2B4
Applications:	FC, IF, WB
Recommended Dilution:	WB 1:2000, IF 1:100, FC 1:100
Reactivity:	Human, Mouse, Rat
Host:	Mouse
Isotype:	IgG2a
Clonality:	Monoclonal
Immunogen:	Full length human recombinant protein of human TUBA3E (NP_997195) produced in HEK293T cell.
Formulation:	PBS (pH 7.3) containing 1% BSA, 50% glycerol and 0.02% sodium azide.
Concentration:	0.5 mg/ml
Purification:	Purified from mouse ascites fluids or tissue culture supernatant by affinity chromatography (protein A/G)
Conjugation:	Biotin
Storage:	Store at -20°C as received.
Stability:	Stable for 12 months from date of receipt.
Predicted Protein Size:	49.7 kDa
Gene Name:	tubulin alpha 3e
Database Link:	NP_997195 Entrez Gene 112714 Human Q6PEY2
Synonyms:	alpha 3e; tubulin
Protein Families:	Druggable Genome
Protein Pathways:	Gap junction, Pathogenic Escherichia coli infection

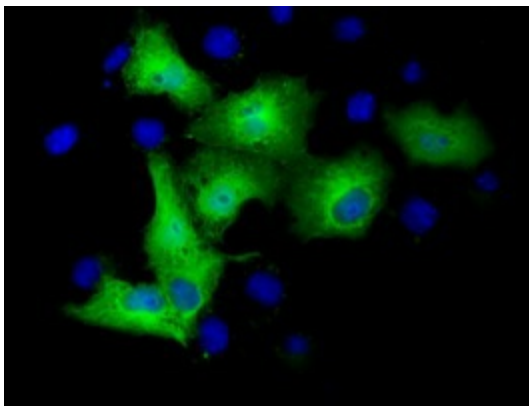


[View online »](#)

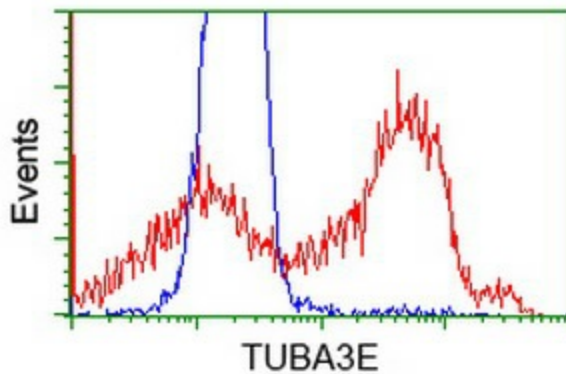
Product images:



HEK293T cells were transfected with the pCMV6-ENTRY control (Cat# [PS100001], Left lane) or pCMV6-ENTRY TUBA3E (Cat# [RC209279], Right lane) cDNA for 48 hrs and lysed. Equivalent amounts of cell lysates (5 ug per lane) were separated by SDS-PAGE and immunoblotted with anti-TUBA3E(Cat# [TA501595]). Positive lysates [LY404091] (100ug) and [LC404091] (20ug) can be purchased separately from OriGene.



Anti-TUBA3E mouse monoclonal antibody ([TA501595]) immunofluorescent staining of COS7 cells transiently transfected by pCMV6-ENTRY TUBA3E ([RC209279]).



HEK293T cells transfected with either [RC209279] overexpress plasmid (Red) or empty vector control plasmid (Blue) were immunostained by anti-TUBA3E antibody ([TA501595]), and then analyzed by flow cytometry.