

## Product datasheet for **TA501595**

### **TUBA3E Mouse Monoclonal Antibody [Clone ID: OTI2B4]**

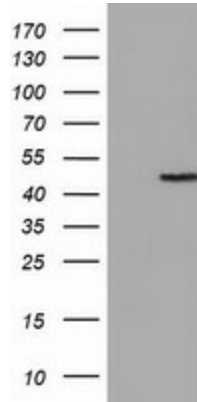
#### **Product data:**

<b>Product Type:</b>	Primary Antibodies
<b>Clone Name:</b>	OTI2B4
<b>Applications:</b>	FC, IF, WB
<b>Recommended Dilution:</b>	WB 1:2000, IF 1:100, FC 1:100
<b>Reactivity:</b>	Human, Mouse, Rat
<b>Host:</b>	Mouse
<b>Isotype:</b>	IgG2a
<b>Clonality:</b>	Monoclonal
<b>Immunogen:</b>	Full length human recombinant protein of human TUBA3E (NP_997195) produced in HEK293T cell.
<b>Formulation:</b>	PBS (pH 7.3) containing 1% BSA, 50% glycerol and 0.02% sodium azide.
<b>Concentration:</b>	0.63 mg/ml
<b>Purification:</b>	Purified from mouse ascites fluids or tissue culture supernatant by affinity chromatography (protein A/G)
<b>Conjugation:</b>	Unconjugated
<b>Storage:</b>	Store at -20°C as received.
<b>Stability:</b>	Stable for 12 months from date of receipt.
<b>Predicted Protein Size:</b>	49.7 kDa
<b>Gene Name:</b>	tubulin alpha 3e
<b>Database Link:</b>	<a href="#">NP_997195</a> <a href="#">Entrez Gene 112714 Human</a> <a href="#">Q6PEY2</a>
<b>Synonyms:</b>	alpha 3e; tubulin
<b>Protein Families:</b>	Druggable Genome
<b>Protein Pathways:</b>	Gap junction, Pathogenic Escherichia coli infection

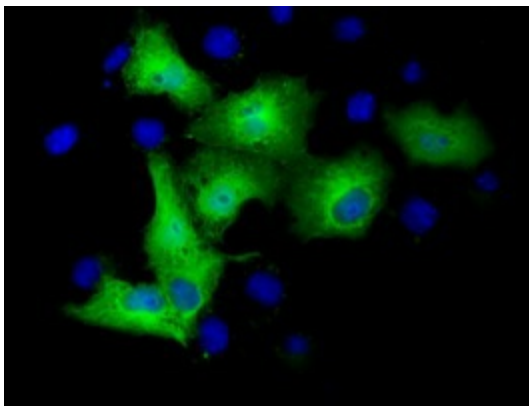


[View online »](#)

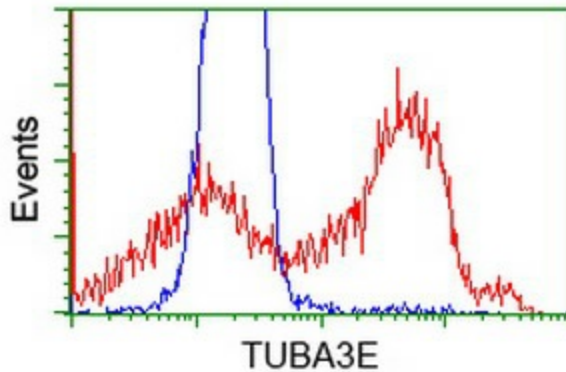
Product images:



HEK293T cells were transfected with the pCMV6-ENTRY control (Cat# [PS100001], Left lane) or pCMV6-ENTRY TUBA3E (Cat# [RC209279], Right lane) cDNA for 48 hrs and lysed. Equivalent amounts of cell lysates (5 ug per lane) were separated by SDS-PAGE and immunoblotted with anti-TUBA3E(Cat# TA501595). Positive lysates [LY404091] (100ug) and [LC404091] (20ug) can be purchased separately from OriGene.



Anti-TUBA3E mouse monoclonal antibody (TA501595) immunofluorescent staining of COS7 cells transiently transfected by pCMV6-ENTRY TUBA3E ([RC209279]).



HEK293T cells transfected with either [RC209279] overexpress plasmid (Red) or empty vector control plasmid (Blue) were immunostained by anti-TUBA3E antibody (TA501595), and then analyzed by flow cytometry.