

Product datasheet for **TA501586AM**

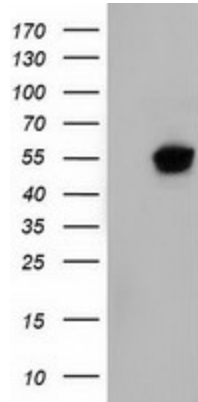
NT5DC1 Mouse Monoclonal Antibody (Biotin conjugated) [Clone ID: OTI2H8]

Product data:

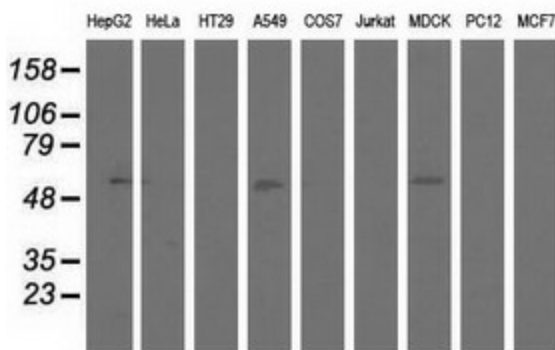
Product Type:	Primary Antibodies
Clone Name:	OTI2H8
Applications:	FC, IHC, WB
Recommended Dilution:	WB 1:500~2000, IHC 1:150, FLOW 1:100
Reactivity:	Human, Dog
Host:	Mouse
Isotype:	IgG2b
Clonality:	Monoclonal
Immunogen:	Full length human recombinant protein of human NT5DC1 (NP_689942) produced in HEK293T cell.
Formulation:	PBS (pH 7.3) containing 1% BSA, 50% glycerol and 0.02% sodium azide.
Concentration:	0.5 mg/ml
Purification:	Purified from mouse ascites fluids or tissue culture supernatant by affinity chromatography (protein A/G)
Conjugation:	Biotin
Storage:	Store at -20°C as received.
Stability:	Stable for 12 months from date of receipt.
Predicted Protein Size:	51.7 kDa
Gene Name:	5'-nucleotidase domain containing 1
Database Link:	NP_689942 Entrez Gene 475036 Dog Entrez Gene 221294 Human Q5TFE4
Background:	While the exact function of the protein encoded by this gene is not known, it belongs to the 5'(3')-deoxyribonucleotidase family. [provided by RefSeq]. COMPLETENESS: complete on the 3' end.
Synonyms:	C6orf200; LP2642; NT5C2L1



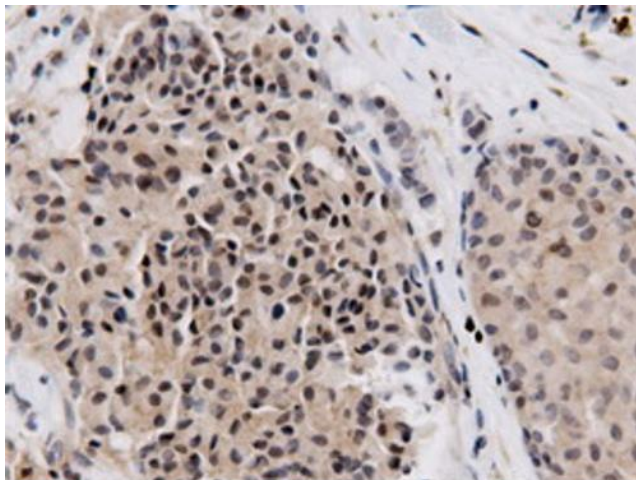
[View online »](#)

Product images:


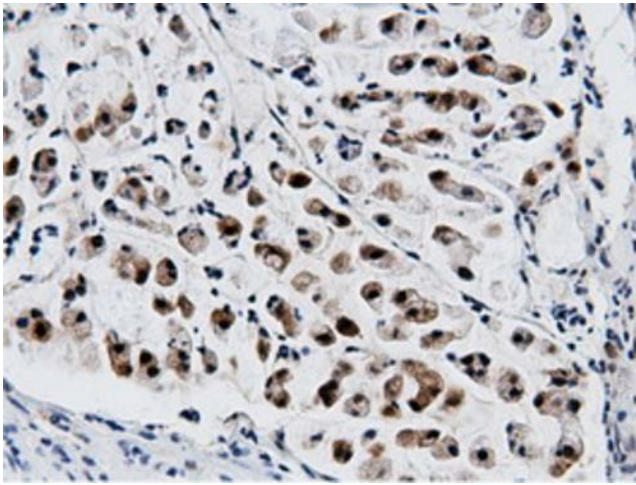
HEK293T cells were transfected with the pCMV6-ENTRY control (Left lane) or pCMV6-ENTRY NT5DC1 ([RC211087], Right lane) cDNA for 48 hrs and lysed. Equivalent amounts of cell lysates (5 ug per lane) were separated by SDS-PAGE and immunoblotted with anti-NT5DC1. Positive lysates [LY403486] (100ug) and [LC403486] (20ug) can be purchased separately from OriGene.



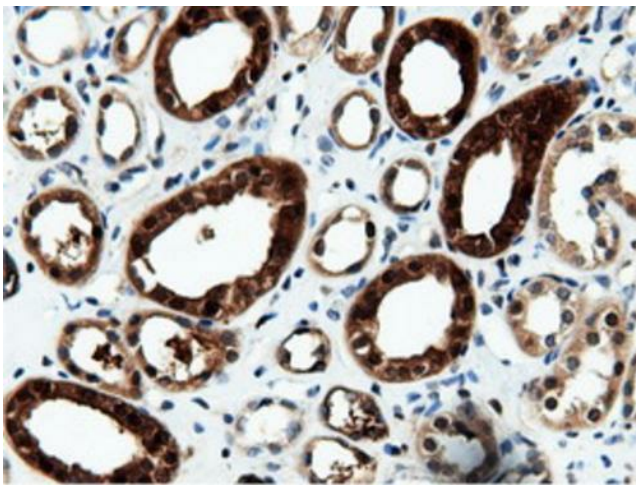
Western blot analysis of extracts (35ug) from 9 different cell lines by using anti-NT5DC1 monoclonal antibody.



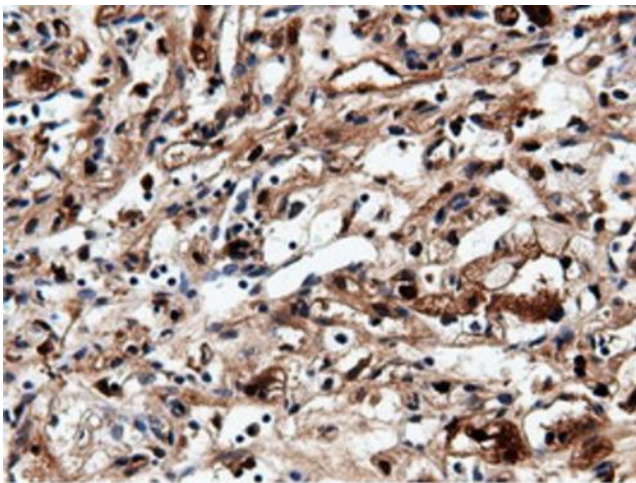
Immunohistochemical staining of paraffin-embedded Adenocarcinoma of Human breast tissue using anti-NT5DC1 mouse monoclonal antibody. Heat-induced epitope retrieval by EDTA solution buffer pH 8.0 at 120°C for 3 min.



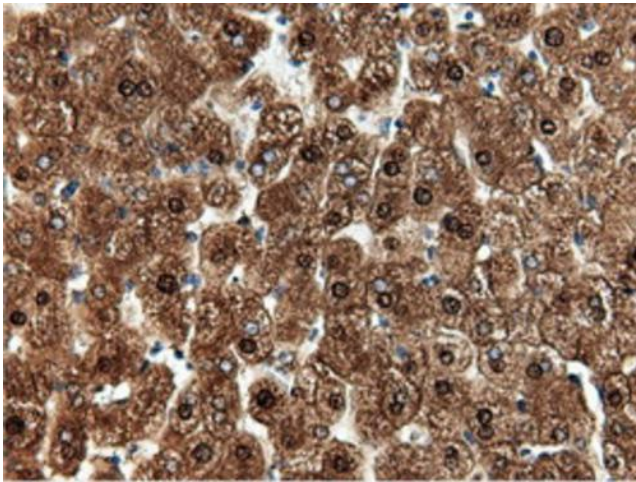
Immunohistochemical staining of paraffin-embedded Adenocarcinoma of Human colon tissue using anti-NT5DC1 mouse monoclonal antibody. Heat-induced epitope retrieval by EDTA solution buffer pH 8.0 at 120°C for 3 min.



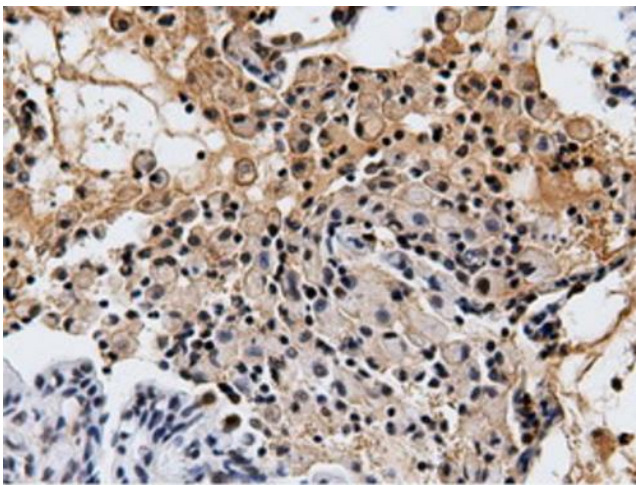
Immunohistochemical staining of paraffin-embedded Human Kidney tissue within the normal limits using anti-NT5DC1 mouse monoclonal antibody. Heat-induced epitope retrieval by EDTA solution buffer pH 8.0 at 120°C for 3 min.



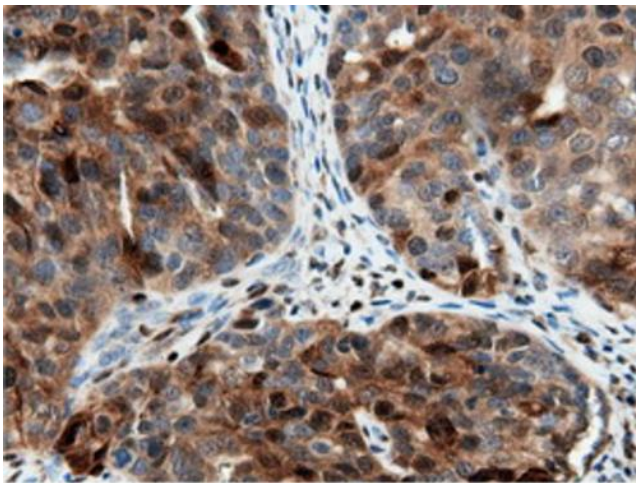
Immunohistochemical staining of paraffin-embedded Carcinoma of Human kidney tissue using anti-NT5DC1 mouse monoclonal antibody. Heat-induced epitope retrieval by EDTA solution buffer pH 8.0 at 120°C for 3 min.



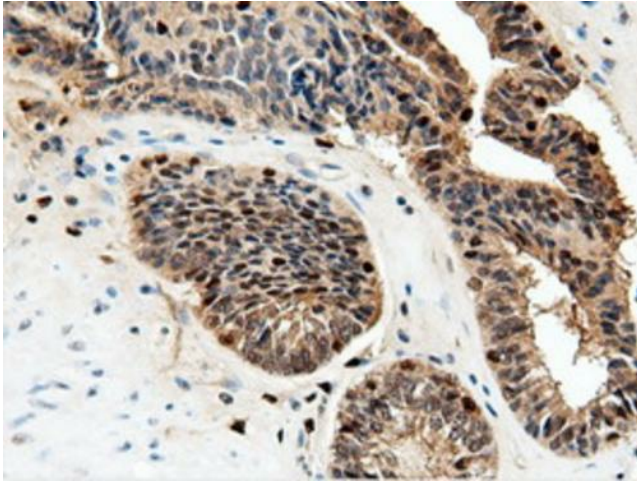
Immunohistochemical staining of paraffin-embedded Human liver tissue within the normal limits using anti-NT5DC1 mouse monoclonal antibody. Heat-induced epitope retrieval by EDTA solution buffer pH 8.0 at 120°C for 3 min.



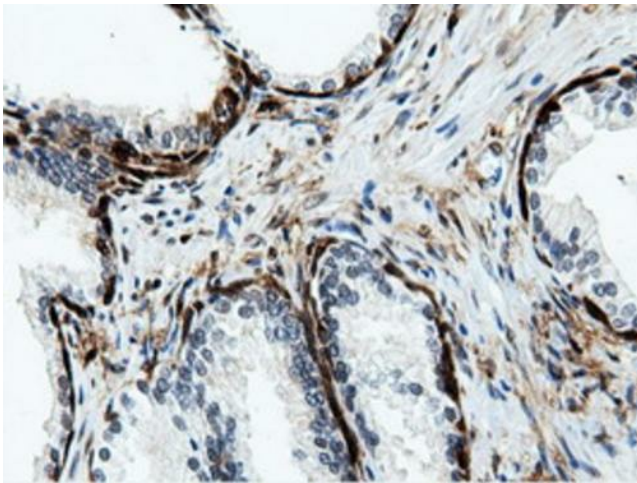
Immunohistochemical staining of paraffin-embedded Carcinoma of Human lung tissue using anti-NT5DC1 mouse monoclonal antibody. Heat-induced epitope retrieval by EDTA solution buffer pH 8.0 at 120°C for 3 min.



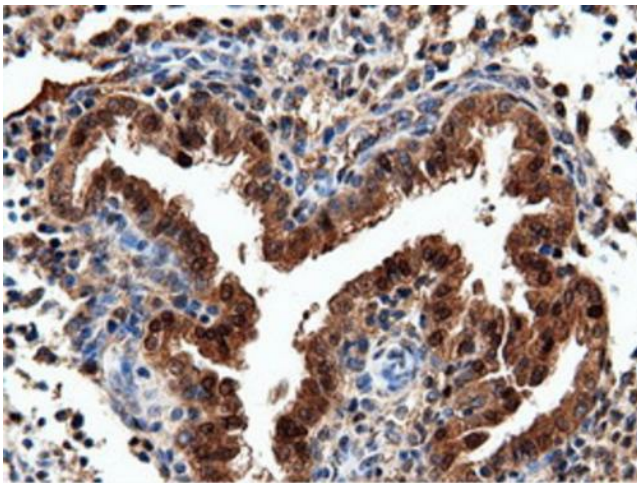
Immunohistochemical staining of paraffin-embedded Adenocarcinoma of Human ovary tissue using anti-NT5DC1 mouse monoclonal antibody. Heat-induced epitope retrieval by EDTA solution buffer pH 8.0 at 120°C for 3 min.



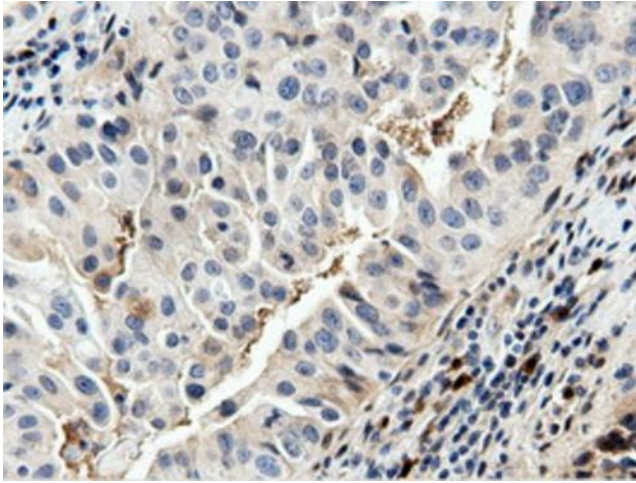
Immunohistochemical staining of paraffin-embedded Adenocarcinoma of Human endometrium tissue using anti-NT5DC1 mouse monoclonal antibody. Heat-induced epitope retrieval by EDTA solution buffer pH 8.0 at 120°C for 3 min.



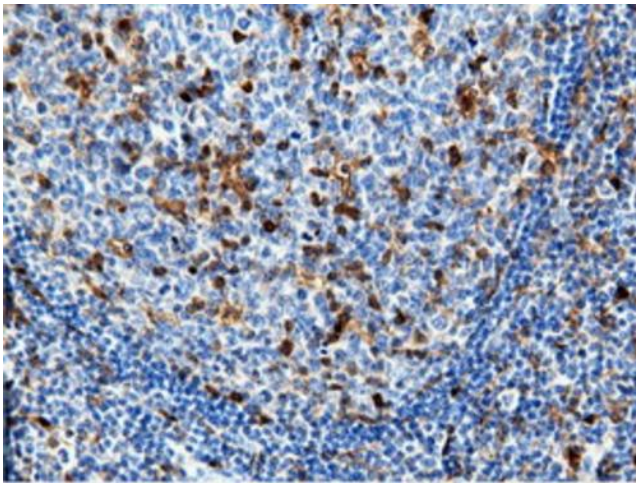
Immunohistochemical staining of paraffin-embedded Human prostate tissue within the normal limits using anti-NT5DC1 mouse monoclonal antibody. Heat-induced epitope retrieval by EDTA solution buffer pH 8.0 at 120°C for 3 min.



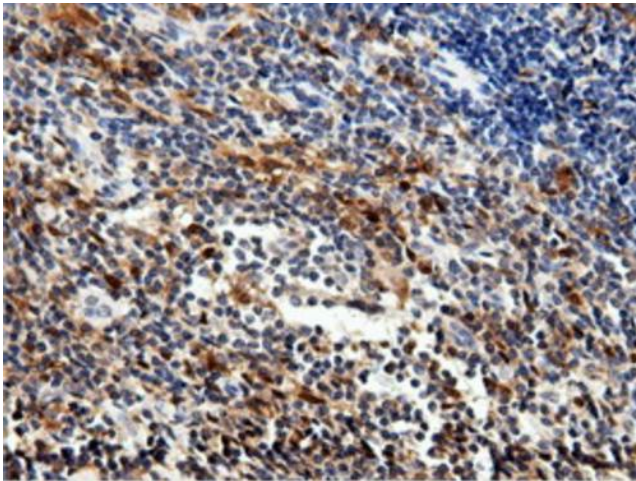
Immunohistochemical staining of paraffin-embedded Carcinoma of Human prostate tissue using anti-NT5DC1 mouse monoclonal antibody. Heat-induced epitope retrieval by EDTA solution buffer pH 8.0 at 120°C for 3 min.



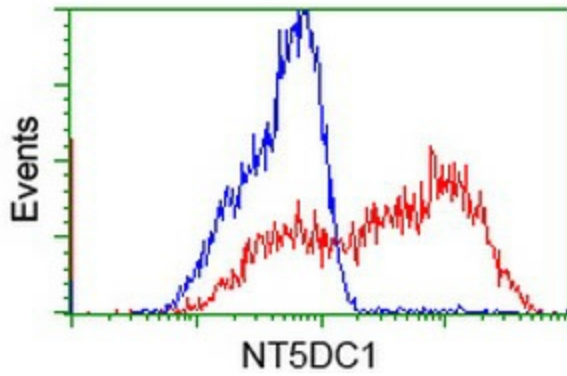
Immunohistochemical staining of paraffin-embedded Carcinoma of Human bladder tissue using anti-NT5DC1 mouse monoclonal antibody. Heat-induced epitope retrieval by EDTA solution buffer pH 8.0 at 120°C for 3 min.



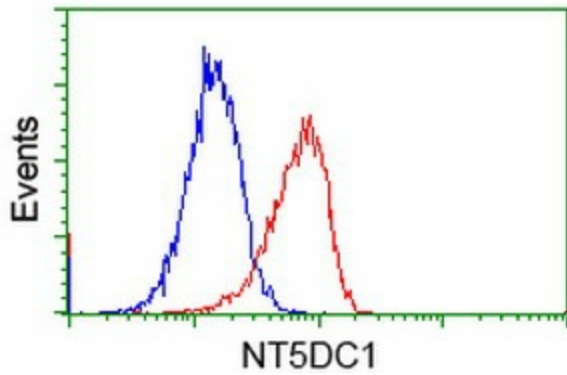
Immunohistochemical staining of paraffin-embedded Human lymph node tissue within the normal limits using anti-NT5DC1 mouse monoclonal antibody. Heat-induced epitope retrieval by EDTA solution buffer pH 8.0 at 120°C for 3 min.



Immunohistochemical staining of paraffin-embedded Human lymphoma tissue using anti-NT5DC1 mouse monoclonal antibody. Heat-induced epitope retrieval by EDTA solution buffer pH 8.0 at 120°C for 3 min.



HEK293T cells transfected with either [RC211087] overexpress plasmid (Red) or empty vector control plasmid (Blue) were immunostained by anti-NT5DC1 antibody ([TA501586]), and then analyzed by flow cytometry.



Flow cytometric Analysis of Jurkat cells, using anti-NT5DC1 antibody ([TA501586]), (Red), compared to a nonspecific negative control antibody (TA50011), (Blue).