

## Product datasheet for **TA501578AM**

### **B7-1 (CD80) Mouse Monoclonal Antibody (Biotin conjugated) [Clone ID: OTI1E9]**

#### **Product data:**

Product Type:	Primary Antibodies
Clone Name:	OTI1E9
Applications:	FC, IF, WB
Recommended Dilution:	WB 1:200~500, IF 1:100, FLOW 1:100
Reactivity:	Human, Dog, Rat, Monkey
Host:	Mouse
Isotype:	IgG1
Clonality:	Monoclonal
Immunogen:	Full length human recombinant protein of human CD80 (NP_005182) produced in HEK293T cell.
Formulation:	PBS (pH 7.3) containing 1% BSA, 50% glycerol and 0.02% sodium azide.
Concentration:	0.5 mg/ml
Purification:	Purified from mouse ascites fluids or tissue culture supernatant by affinity chromatography (protein A/G)
Conjugation:	Biotin
Storage:	Store at -20°C as received.
Stability:	Stable for 12 months from date of receipt.
Predicted Protein Size:	29.3 kDa
Gene Name:	CD80 molecule
Database Link:	<a href="#">NP_005182</a> <a href="#">Entrez Gene 25408 Rat</a> <a href="#">Entrez Gene 403765 Dog</a> <a href="#">Entrez Gene 732518 Monkey</a> <a href="#">Entrez Gene 941 Human</a> <a href="#">P33681</a>
Background:	The B-lymphocyte activation antigen B7-1 (formerly referred to as B7) provides regulatory signals for T lymphocytes as a consequence of binding to the CD28 (MIM 186760) and CTLA4 (MIM 123890) ligands of T cells. [supplied by OMIM]
Synonyms:	B7; B7-1; B7.1; BB1; CD28LG; CD28LG1; LAB7

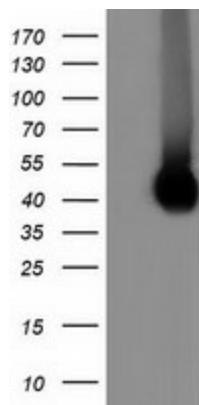


[View online »](#)

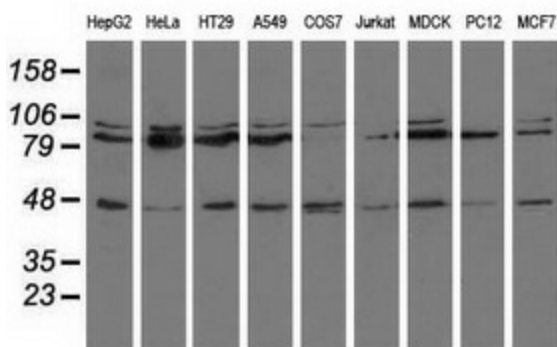
**Protein Families:** Druggable Genome, Transcription Factors, Transmembrane

**Protein Pathways:** Allograft rejection, Autoimmune thyroid disease, Cell adhesion molecules (CAMs), Graft-versus-host disease, Systemic lupus erythematosus, Toll-like receptor signaling pathway, Type I diabetes mellitus, Viral myocarditis

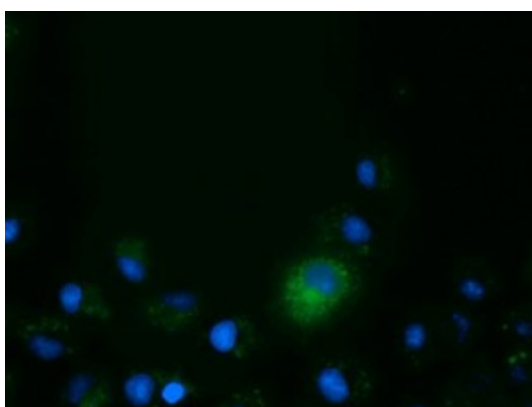
**Product images:**



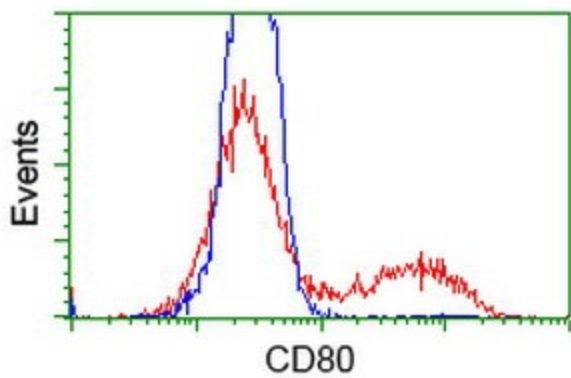
HEK293T cells were transfected with the pCMV6-ENTRY control (Left lane) or pCMV6-ENTRY CD80 ([RC206540], Right lane) cDNA for 48 hrs and lysed. Equivalent amounts of cell lysates (5 ug per lane) were separated by SDS-PAGE and immunoblotted with anti-CD80.



Western blot analysis of extracts (35ug) from 9 different cell lines by using anti-CD80 monoclonal antibody.



Anti-CD80 mouse monoclonal antibody ([TA501578]) immunofluorescent staining of COS7 cells transiently transfected by pCMV6-ENTRY CD80 ([RC206540]).



HEK293T cells transfected with either [RC206540] overexpress plasmid (Red) or empty vector control plasmid (Blue) were immunostained by anti-CD80 antibody ([TA501578]), and then analyzed by flow cytometry.