

## Product datasheet for **TA501573AM**

### **CORO1B Mouse Monoclonal Antibody (Biotin conjugated) [Clone ID: OTI3D10]**

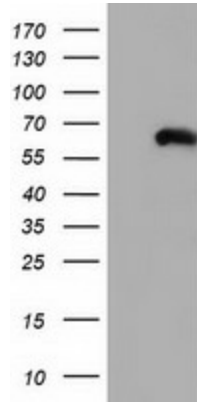
#### **Product data:**

|                                |  |
|--------------------------------|--|
| <b>Product Type:</b>           | Primary Antibodies   |
| <b>Clone Name:</b>             | OTI3D10  |
| <b>Applications:</b>           | FC, IF, WB   |
| <b>Recommended Dilution:</b>   | WB 1:500~2000, IF 1:100, FLOW 1:100  |
| <b>Reactivity:</b>             | Human, Mouse, Rat  |
| <b>Host:</b>                   | Mouse  |
| <b>Isotype:</b>                | IgG1   |
| <b>Clonality:</b>              | Monoclonal   |
| <b>Immunogen:</b>              | Full length human recombinant protein of human CORO1B (NP_065174) produced in HEK293T cell.  |
| <b>Formulation:</b>            | PBS (pH 7.3) containing 1% BSA, 50% glycerol and 0.02% sodium azide.   |
| <b>Concentration:</b>          | 0.5 mg/ml  |
| <b>Purification:</b>           | Purified from mouse ascites fluids or tissue culture supernatant by affinity chromatography (protein A/G)  |
| <b>Conjugation:</b>            | Biotin   |
| <b>Storage:</b>                | Store at -20°C as received.  |
| <b>Stability:</b>              | Stable for 12 months from date of receipt.   |
| <b>Predicted Protein Size:</b> | 54.1 kDa   |
| <b>Gene Name:</b>              | coronin 1B   |
| <b>Database Link:</b>          | <a href="#">NP_065174</a><br><a href="#">Entrez Gene 23789 Mouse</a> <a href="#">Entrez Gene 29474 Rat</a> <a href="#">Entrez Gene 57175 Human</a><br><a href="#">Q9BR76</a>   |
| <b>Background:</b>             | Members of the coronin family, such as CORO1B, are WD repeat-containing actin-binding proteins that regulate cell motility (Cai et al., 2005 (PubMed 16027158)).(supplied by OMIM)Regulates leading edge dynamics and cell motility in fibroblasts. May be involved in cytokinesis and signaltransduction (By similarity). |
| <b>Synonyms:</b>               | CORONIN-2  |

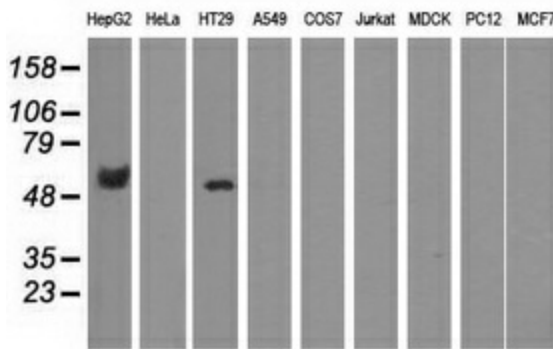


[View online »](#)

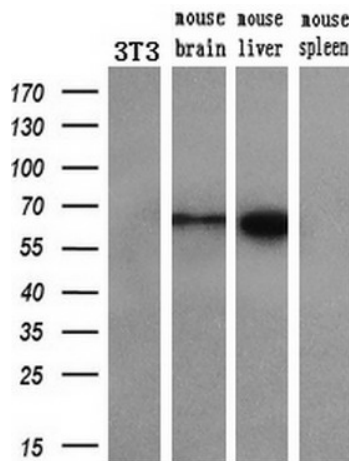
**Product images:**



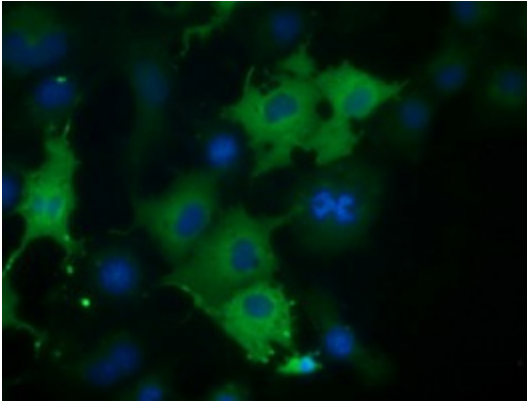
HEK293T cells were transfected with the pCMV6-ENTRY control (Cat# [PS100001], Left lane) or pCMV6-ENTRY CORO1B (Cat# [RC203023], Right lane) cDNA for 48 hrs and lysed. Equivalent amounts of cell lysates (5 ug per lane) were separated by SDS-PAGE and immunoblotted with anti-CORO1B(Cat# [TA501573]). Positive lysates [LY402787] (100ug) and [LC402787] (20ug) can be purchased separately from OriGene.



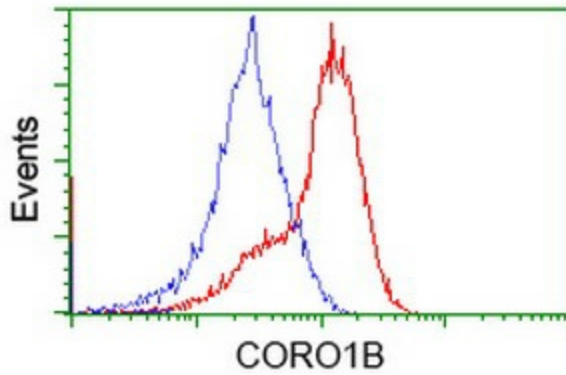
Western blot analysis of extracts (35ug) from 9 different cell lines by using anti-CORO1B monoclonal antibody.



Western blot analysis of extracts (10ug) from a mouse cell line and 3 different mouse tissues by using anti-CORO1B monoclonal antibody (1:200).



Anti-CORO1B mouse monoclonal antibody ([TA501573]) immunofluorescent staining of COS7 cells transiently transfected by pCMV6-ENTRY CORO1B ([RC203023]).



HEK293T cells transfected with either [RC203023] overexpress plasmid (Red) or empty vector control plasmid (Blue) were immunostained by anti-CORO1B antibody ([TA501573]), and then analyzed by flow cytometry.