

## Product datasheet for **TA501569BM**

### Breast cancer suppressor candidate 1 (VWA5A) Mouse Monoclonal Antibody (HRP conjugated) [Clone ID: OTI3D6]

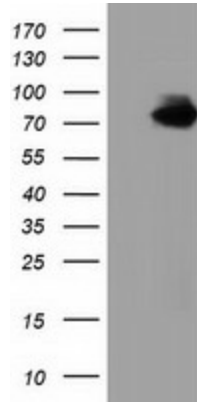
#### Product data:

Product Type:	Primary Antibodies
Clone Name:	OTI3D6
Applications:	FC, IF, IHC, WB
Recommended Dilution:	WB 1:2000, IHC 1:150, IF 1:100, FLOW 1:100
Reactivity:	Human
Host:	Mouse
Isotype:	IgG2a
Clonality:	Monoclonal
Immunogen:	Full length human recombinant protein of human VWA5A (NP_055437) produced in HEK293T cell.
Formulation:	PBS (pH 7.3) containing 1% BSA, 50% glycerol.
Concentration:	0.5 mg/ml
Purification:	Purified from mouse ascites fluids or tissue culture supernatant by affinity chromatography (protein A/G)
Conjugation:	HRP
Storage:	Store at -20°C as received.
Stability:	Stable for 12 months from date of receipt.
Predicted Protein Size:	86.3 kDa
Gene Name:	von Willebrand factor A domain containing 5A
Database Link:	<a href="#">NP_055437</a> <a href="#">Entrez Gene 4013 Human</a> <a href="#">O00534</a>
Synonyms:	BCSC-1; BCSC1; LOH11CR2A

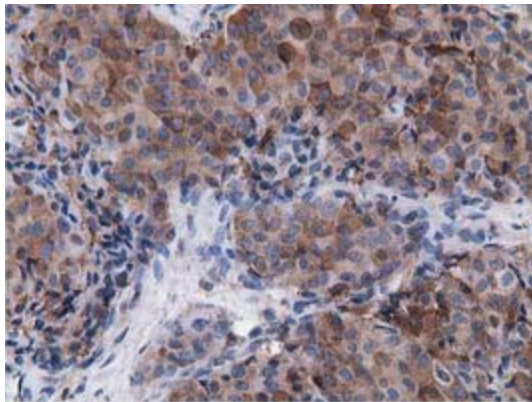


[View online »](#)

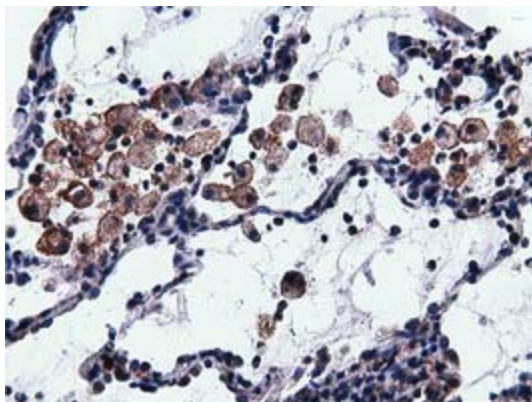
**Product images:**



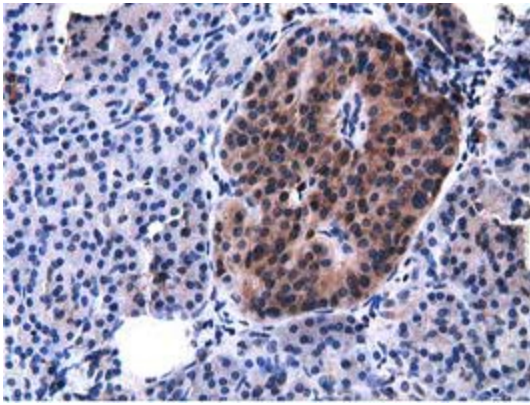
HEK293T cells were transfected with the pCMV6-ENTRY control (Cat# [PS100001], Left lane) or pCMV6-ENTRY VWA5A (Cat# [RC212185], Right lane) cDNA for 48 hrs and lysed. Equivalent amounts of cell lysates (5 ug per lane) were separated by SDS-PAGE and immunoblotted with anti-VWA5A (Cat# [TA501569]). Positive lysates [LY402354] (100ug) and [LC402354] (20ug) can be purchased separately from OriGene.



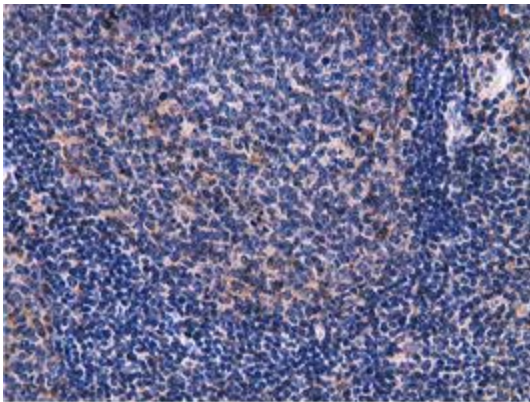
Immunohistochemical staining of paraffin-embedded Adenocarcinoma of Human breast tissue using anti-VWA5A mouse monoclonal antibody. (Heat-induced epitope retrieval by 10mM citric buffer, pH6.0, 100°C for 10min, [TA501569])



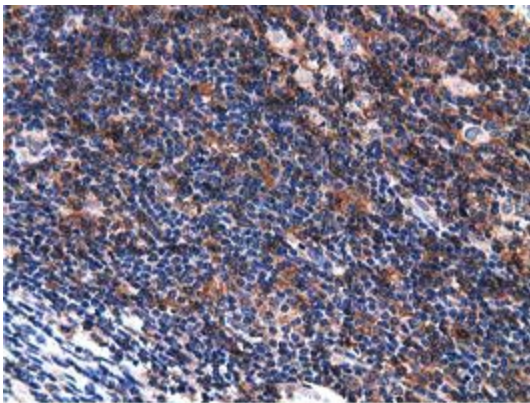
Immunohistochemical staining of paraffin-embedded Carcinoma of Human lung tissue using anti-VWA5A mouse monoclonal antibody. (Heat-induced epitope retrieval by 10mM citric buffer, pH6.0, 100°C for 10min, [TA501569])



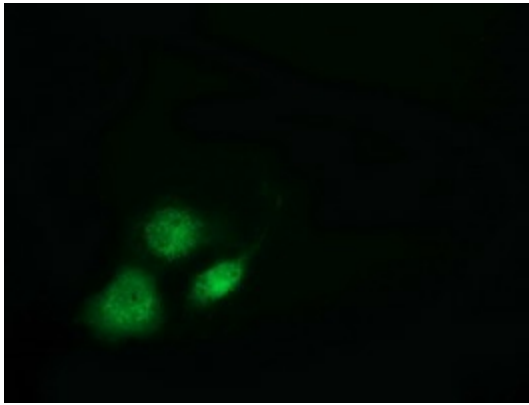
Immunohistochemical staining of paraffin-embedded Human pancreas tissue within the normal limits using anti-VWA5A mouse monoclonal antibody. (Heat-induced epitope retrieval by 10mM citric buffer, pH6.0, 100°C for 10min, [TA501569])



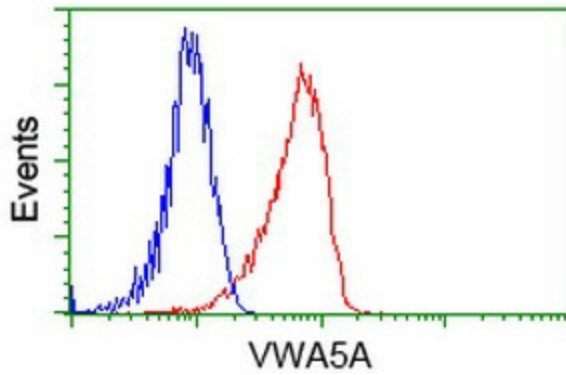
Immunohistochemical staining of paraffin-embedded Human lymph node tissue within the normal limits using anti-VWA5A mouse monoclonal antibody. (Heat-induced epitope retrieval by 10mM citric buffer, pH6.0, 100°C for 10min, [TA501569])



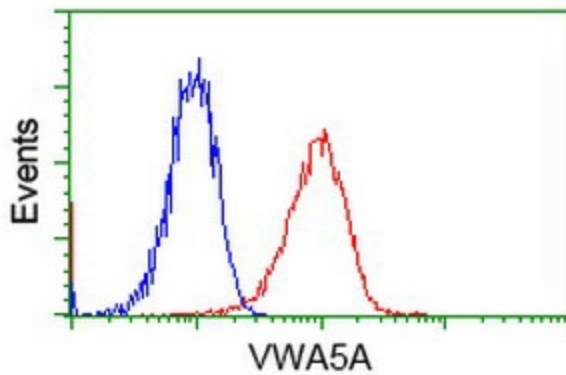
Immunohistochemical staining of paraffin-embedded Human lymphoma tissue using anti-VWA5A mouse monoclonal antibody. (Heat-induced epitope retrieval by 10mM citric buffer, pH6.0, 100°C for 10min, [TA501569])



Anti-VWA5A mouse monoclonal antibody ([TA501569]) immunofluorescent staining of COS7 cells transiently transfected by pCMV6-ENTRY VWA5A ([RC212185]).



Flow cytometric Analysis of HeLa cells, using anti-VWA5A antibody ([TA501569]), (Red), compared to a nonspecific negative control antibody (TA50011), (Blue).



Flow cytometric Analysis of Jurkat cells, using anti-VWA5A antibody ([TA501569]), (Red), compared to a nonspecific negative control antibody (TA50011), (Blue).