

Product datasheet for **TA501563S**

PRPSAP2 Mouse Monoclonal Antibody [Clone ID: OTI1E3]

Product data:

| | |
|-------------------------|--|
| Product Type: | Primary Antibodies |
| Clone Name: | OTI1E3 |
| Applications: | FC, IF, IHC, WB |
| Recommended Dilution: | WB 1:2000, IHC 1:150, IF 1:100, FLOW 1:100 |
| Reactivity: | Human, Mouse, Rat |
| Host: | Mouse |
| Isotype: | IgG1 |
| Clonality: | Monoclonal |
| Immunogen: | Full length human recombinant protein of human PRPSAP2 (NP_002758) produced in HEK293T cell. |
| Formulation: | PBS (pH 7.3) containing 1% BSA, 50% glycerol and 0.02% sodium azide. |
| Concentration: | 0.7 mg/ml |
| Purification: | Purified from mouse ascites fluids or tissue culture supernatant by affinity chromatography (protein A/G) |
| Conjugation: | Unconjugated |
| Storage: | Store at -20°C as received. |
| Stability: | Stable for 12 months from date of receipt. |
| Predicted Protein Size: | 40.7 kDa |
| Gene Name: | phosphoribosyl pyrophosphate synthetase associated protein 2 |
| Database Link: | NP_002758 Entrez Gene 117272 Rat Entrez Gene 212627 Mouse Entrez Gene 5636 Human O60256 |
| Background: | The enzyme phosphoribosylpyrophosphate synthetase (PRS) catalyzes the formation of phosphoribosylpyrophosphate which is a substrate for synthesis of purine and pyrimidine nucleotides, histidine, tryptophan and NAD. PRS exists as a complex with two catalytic subunits and two associated subunits. This gene encodes a non-catalytic associated subunit of PRS. [provided by RefSeq]. COMPLETENESS: complete on the 3' end. |

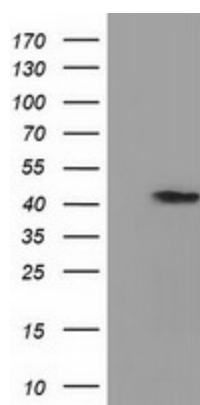


[View online »](#)

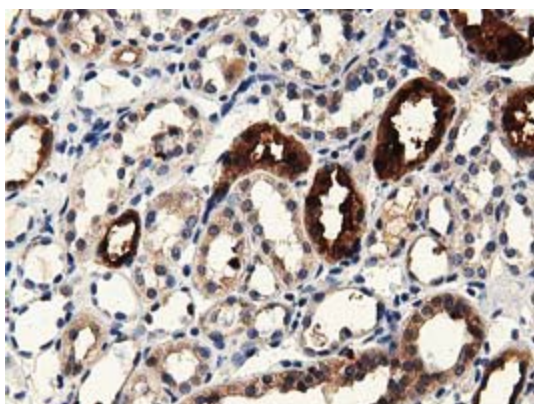
Synonyms: PAP41

Protein Families: Druggable Genome

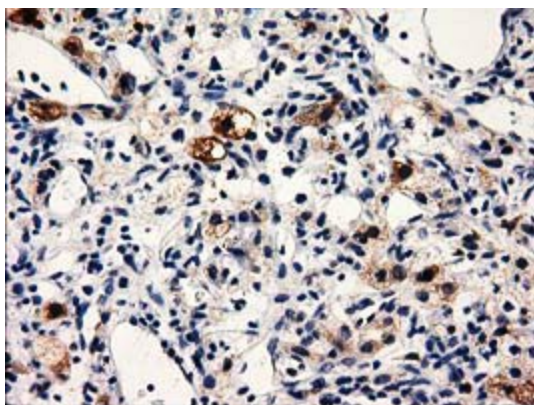
Product images:



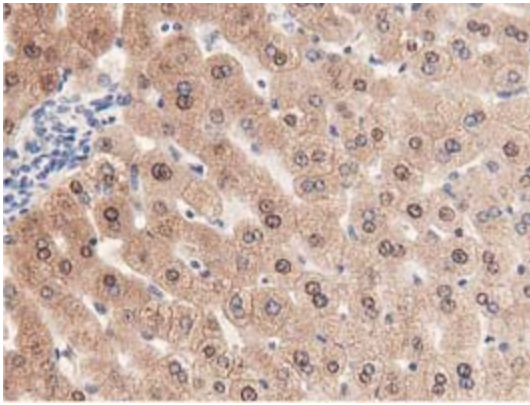
HEK293T cells were transfected with the pCMV6-ENTRY control (Cat# [PS100001], Left lane) or pCMV6-ENTRY PRPSAP2 (Cat# [RC210719], Right lane) cDNA for 48 hrs and lysed. Equivalent amounts of cell lysates (5 ug per lane) were separated by SDS-PAGE and immunoblotted with anti-PRPSAP2 (Cat# [TA501563]). Positive lysates [LY400988] (100ug) and [LC400988] (20ug) can be purchased separately from OriGene.



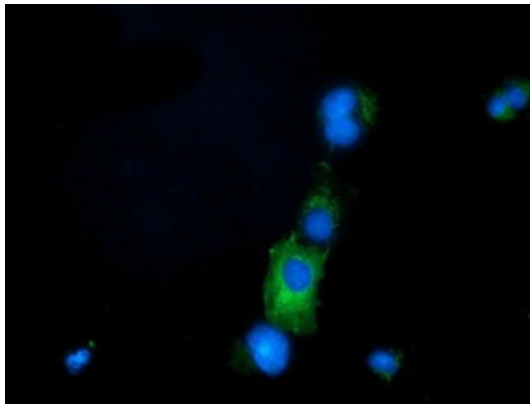
Immunohistochemical staining of paraffin-embedded Human Kidney tissue within the normal limits using anti-PRPSAP2 mouse monoclonal antibody. (Heat-induced epitope retrieval by 10mM citric buffer, pH6.0, 100°C for 10min, [TA501563])



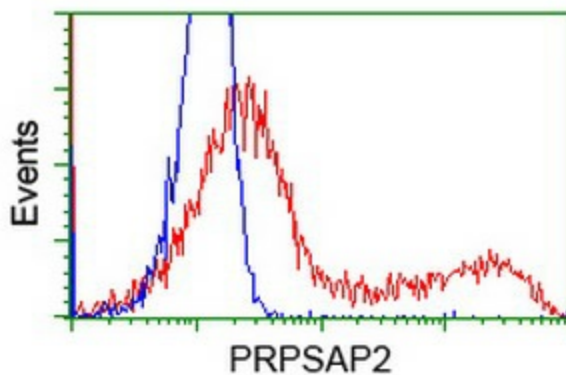
Immunohistochemical staining of paraffin-embedded Carcinoma of Human kidney tissue using anti-PRPSAP2 mouse monoclonal antibody. (Heat-induced epitope retrieval by 10mM citric buffer, pH6.0, 100°C for 10min, [TA501563])



Immunohistochemical staining of paraffin-embedded Human liver tissue within the normal limits using anti-PRPSAP2 mouse monoclonal antibody. (Heat-induced epitope retrieval by 10mM citric buffer, pH6.0, 100°C for 10min, [TA501563])



Anti-PRPSAP2 mouse monoclonal antibody ([TA501563]) immunofluorescent staining of COS7 cells transiently transfected by pCMV6-ENTRY PRPSAP2 ([RC210719]).



HEK293T cells transfected with either [RC210719] overexpress plasmid (Red) or empty vector control plasmid (Blue) were immunostained by anti-PRPSAP2 antibody ([TA501563]), and then analyzed by flow cytometry.