

## Product datasheet for **TA501560S**

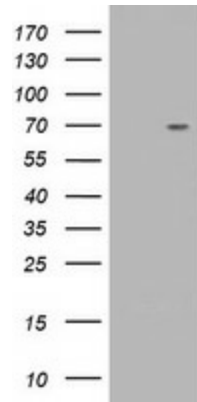
### **RNF86 (TRIM2) Mouse Monoclonal Antibody [Clone ID: OTI1D12]**

#### **Product data:**

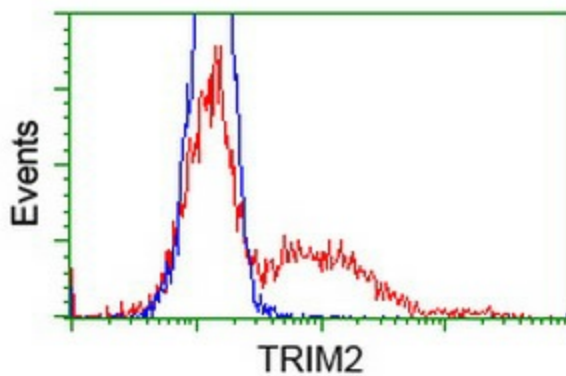
<b>Product Type:</b>	Primary Antibodies
<b>Clone Name:</b>	OTI1D12
<b>Applications:</b>	FC, WB
<b>Recommended Dilution:</b>	WB 1:2000, FLOW 1:100
<b>Reactivity:</b>	Human, Mouse, Rat
<b>Host:</b>	Mouse
<b>Isotype:</b>	IgG1
<b>Clonality:</b>	Monoclonal
<b>Immunogen:</b>	Human recombinant protein fragment corresponding to amino acids 1-100 and 645-744 of human TRIM2 (NP_056086) produced in HEK293T cell.
<b>Formulation:</b>	PBS (pH 7.3) containing 1% BSA, 50% glycerol and 0.02% sodium azide.
<b>Concentration:</b>	1 mg/ml
<b>Purification:</b>	Purified from mouse ascites fluids or tissue culture supernatant by affinity chromatography (protein A/G)
<b>Conjugation:</b>	Unconjugated
<b>Storage:</b>	Store at -20°C as received.
<b>Stability:</b>	Stable for 12 months from date of receipt.
<b>Predicted Protein Size:</b>	81.3 kDa
<b>Gene Name:</b>	tripartite motif containing 2
<b>Database Link:</b>	<a href="#">NP_056086</a> <a href="#">Entrez Gene 80890 Mouse</a> <a href="#">Entrez Gene 361970 Rat</a> <a href="#">Entrez Gene 23321 Human</a> <a href="#">Q9C040</a>
<b>Background:</b>	The protein encoded by this gene is a member of the tripartite motif (TRIM) family. The TRIM motif includes three zinc-binding domains, a RING, a B-box type 1 and a B-box type 2, and a coiled-coil region. The protein localizes to cytoplasmic filaments. Its function has not been identified. [provided by RefSeq]
<b>Synonyms:</b>	CMT2R; RNF86



[View online »](#)

**Product images:**

HEK293T cells were transfected with the pCMV6-ENTRY control (Left lane) or pCMV6-ENTRY TRIM2 ([RC229368], Right lane) cDNA for 48 hrs and lysed. Equivalent amounts of cell lysates (5 ug per lane) were separated by SDS-PAGE and immunoblotted with anti-TRIM2. Positive lysates [LY414662] (100ug) and [LC414662] (20ug) can be purchased separately from OriGene.



HEK293T cells transfected with either [RC203947] overexpress plasmid (Red) or empty vector control plasmid (Blue) were immunostained by anti-TRIM2 antibody ([TA501560]), and then analyzed by flow cytometry.