

Product datasheet for **TA501555M**

LIN7 (LIN7B) Mouse Monoclonal Antibody [Clone ID: OTI1E3]

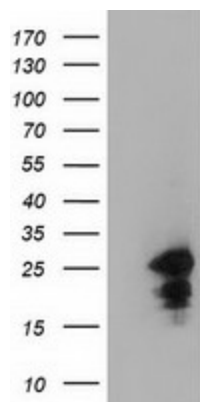
Product data:

Product Type:	Primary Antibodies
Clone Name:	OTI1E3
Applications:	FC, IF, WB
Recommended Dilution:	WB 1:2000, IF 1:100, FLOW 1:100
Reactivity:	Human, Mouse, Rat
Host:	Mouse
Isotype:	IgG2b
Clonality:	Monoclonal
Immunogen:	Full length human recombinant protein of human LIN7B (NP_071448) produced in HEK293T cell.
Formulation:	PBS (pH 7.3) containing 1% BSA, 50% glycerol and 0.02% sodium azide.
Concentration:	0.83 mg/ml
Purification:	Purified from mouse ascites fluids or tissue culture supernatant by affinity chromatography (protein A/G)
Conjugation:	Unconjugated
Storage:	Store at -20°C as received.
Stability:	Stable for 12 months from date of receipt.
Predicted Protein Size:	22.7 kDa
Gene Name:	lin-7 homolog B, crumbs cell polarity complex component
Database Link:	NP_071448 Entrez Gene 64130 Human Q9HAP6
Synonyms:	LIN-7B; MALS-2; MALS2; VELI2
Protein Families:	Druggable Genome

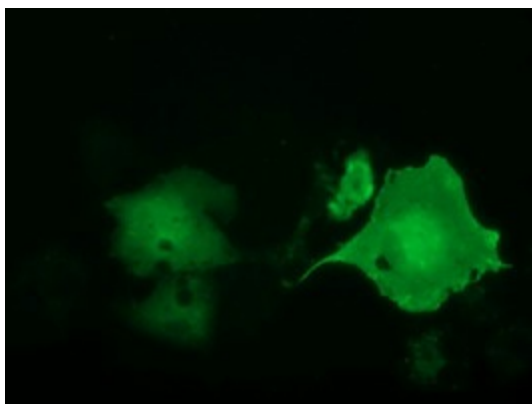


[View online »](#)

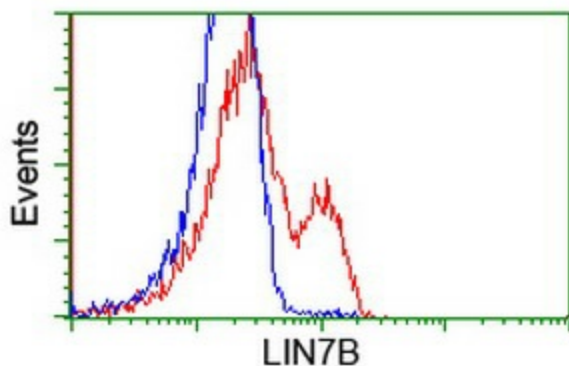
Product images:



HEK293T cells were transfected with the pCMV6-ENTRY control (Left lane) or pCMV6-ENTRY LIN7B ([RC205598], Right lane) cDNA for 48 hrs and lysed. Equivalent amounts of cell lysates (5 ug per lane) were separated by SDS-PAGE and immunoblotted with anti-LIN7B. Positive lysates [LY411720] (100ug) and [LC411720] (20ug) can be purchased separately from OriGene.



Anti-LIN7B mouse monoclonal antibody ([TA501555]) immunofluorescent staining of COS7 cells transiently transfected by pCMV6-ENTRY LIN7B ([RC205598]).



HEK293T cells transfected with either [RC205598] overexpress plasmid (Red) or empty vector control plasmid (Blue) were immunostained by anti-LIN7B antibody ([TA501555]), and then analyzed by flow cytometry.