

Product datasheet for **TA501537**

BTN1A1 Mouse Monoclonal Antibody [Clone ID: OTI1G2]

Product data:

Product Type:	Primary Antibodies
Clone Name:	OTI1G2
Applications:	FC, IF, WB
Recommended Dilution:	WB 1:2000, IF 1:100
Reactivity:	Human
Host:	Mouse
Isotype:	IgG2b
Clonality:	Monoclonal
Immunogen:	Full length human recombinant protein of human BTN1A1 (NP_001723) produced in HEK293T cell.
Formulation:	PBS (pH 7.3) containing 1% BSA, 50% glycerol and 0.02% sodium azide.
Concentration:	0.67 mg/ml
Purification:	Purified from mouse ascites fluids or tissue culture supernatant by affinity chromatography (protein A/G)
Conjugation:	Unconjugated
Storage:	Store at -20°C as received.
Stability:	Stable for 12 months from date of receipt.
Predicted Protein Size:	58.8 kDa
Gene Name:	butyrophilin subfamily 1 member A1
Database Link:	NP_001723 Entrez Gene 696 Human Q13410
Background:	Butyrophilin is the major protein associated with fat droplets in the milk. It is a member of the immunoglobulin superfamily. It may have a cell surface receptor function. The human butyrophilin gene is localized in the major histocompatibility complex (MHC) class I region of 6p and may have arisen relatively recently in evolution by the shuffling of exons between 2 ancestral gene families [provided by RefSeq].

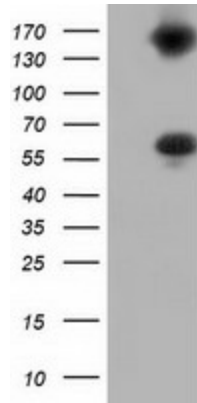


[View online »](#)

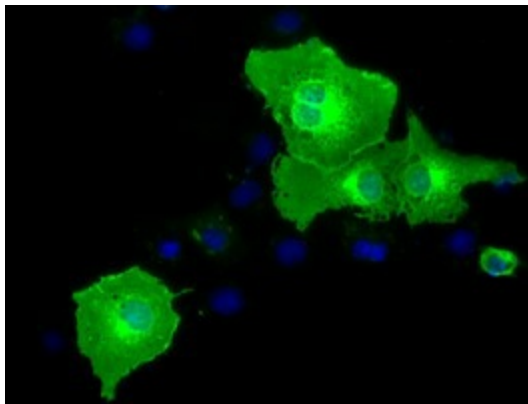
Synonyms: BT; BTN; BTN1

Protein Families: Druggable Genome, Transmembrane

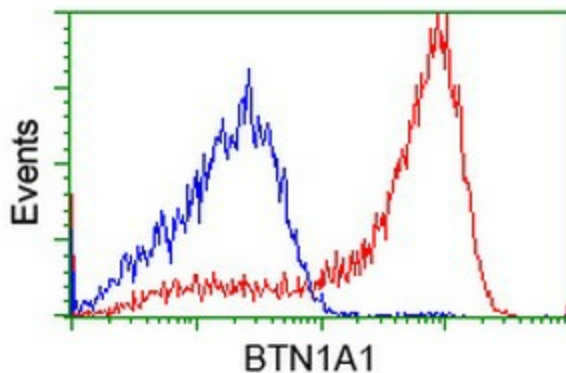
Product images:



HEK293T cells were transfected with the pCMV6-ENTRY control (Left lane) or pCMV6-ENTRY BTN1A1 ([RC223852], Right lane) cDNA for 48 hrs and lysed. Equivalent amounts of cell lysates (5 ug per lane) were separated by SDS-PAGE and immunoblotted with anti-BTN1A1. Positive lysates [LY400653] (100ug) and [LC400653] (20ug) can be purchased separately from OriGene.



Anti-BTN1A1 mouse monoclonal antibody (TA501537) immunofluorescent staining of COS7 cells transiently transfected by pCMV6-ENTRY BTN1A1 ([RC223852]).



HEK293T cells transfected with either [RC223852] overexpress plasmid (Red) or empty vector control plasmid (Blue) were immunostained by anti-BTN1A1 antibody (TA501537), and then analyzed by flow cytometry.