

Product datasheet for **TA501524AM**

QPRT Mouse Monoclonal Antibody (Biotin conjugated) [Clone ID: OT11C10]

Product data:

Product Type:	Primary Antibodies
Clone Name:	OT11C10
Applications:	FC, IF, IHC, WB
Recommended Dilution:	WB 1:500~2000, IHC 1:150, IF 1:100, FLOW 1:100
Reactivity:	Human
Host:	Mouse
Isotype:	IgG1
Clonality:	Monoclonal
Immunogen:	Full length human recombinant protein of human QPRT (NP_055113) produced in HEK293T cell.
Formulation:	PBS (pH 7.3) containing 1% BSA, 50% glycerol and 0.02% sodium azide.
Concentration:	0.5 mg/ml
Purification:	Purified from mouse ascites fluids or tissue culture supernatant by affinity chromatography (protein A/G)
Conjugation:	Biotin
Storage:	Store at -20°C as received.
Stability:	Stable for 12 months from date of receipt.
Predicted Protein Size:	30.6 kDa
Gene Name:	quinolinate phosphoribosyltransferase
Database Link:	NP_055113 Entrez Gene 23475 Human Q15274
Background:	This gene encodes a key enzyme in catabolism of quinolinate, an intermediate in the tryptophan-nicotinamide adenine dinucleotide pathway. Quinolinate acts as a most potent endogenous exitotoxin to neurons. Elevation of quinolinate levels in the brain has been linked to the pathogenesis of neurodegenerative disorders such as epilepsy, Alzheimer's disease, and Huntington's disease. [provided by RefSeq]. COMPLETENESS: complete on the 3' end.

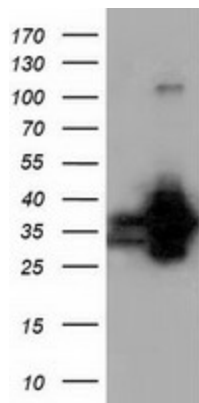


[View online »](#)

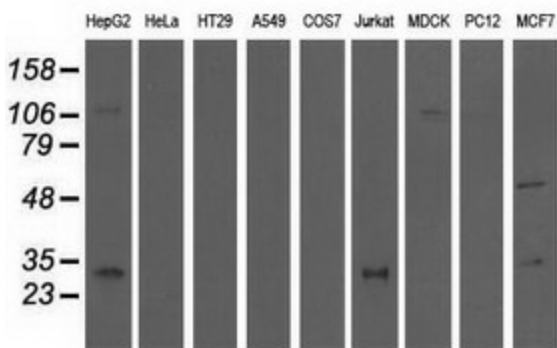
Synonyms: HEL-S-90n; QPRTase

Protein Pathways: Metabolic pathways, Nicotinate and nicotinamide metabolism

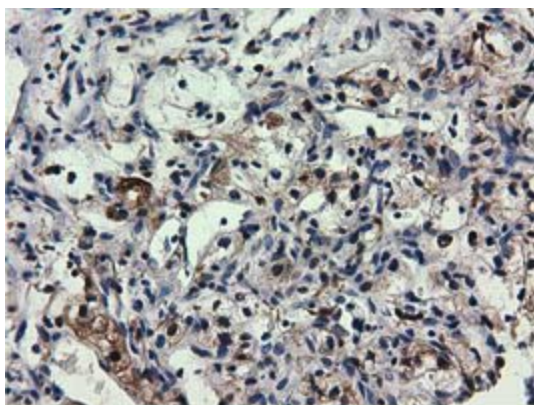
Product images:



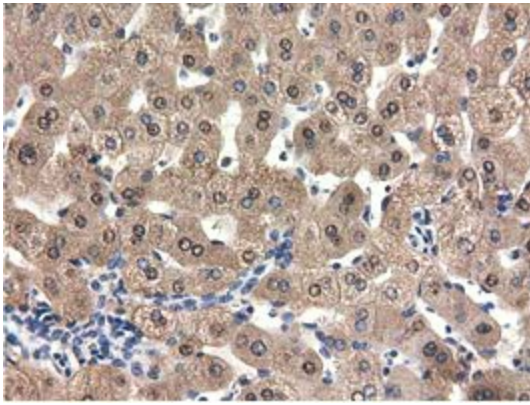
HEK293T cells were transfected with the pCMV6-ENTRY control (Cat# [PS100001], Left lane) or pCMV6-ENTRY QPRT (Cat# [RC202960], Right lane) cDNA for 48 hrs and lysed. Equivalent amounts of cell lysates (5 ug per lane) were separated by SDS-PAGE and immunoblotted with anti-QPRT (Cat# [TA501524]). Positive lysates [LY402307] (100ug) and [LC402307] (20ug) can be purchased separately from OriGene.



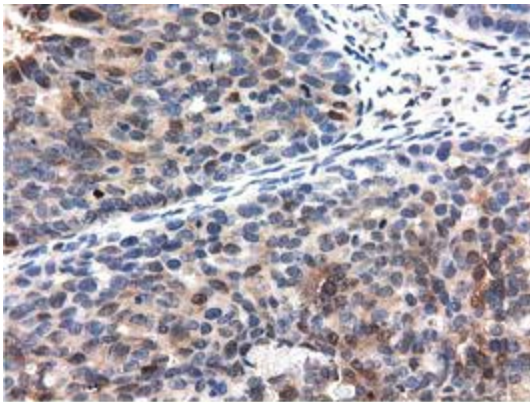
Western blot analysis of extracts (35ug) from 9 different cell lines by using anti-QPRT monoclonal antibody.



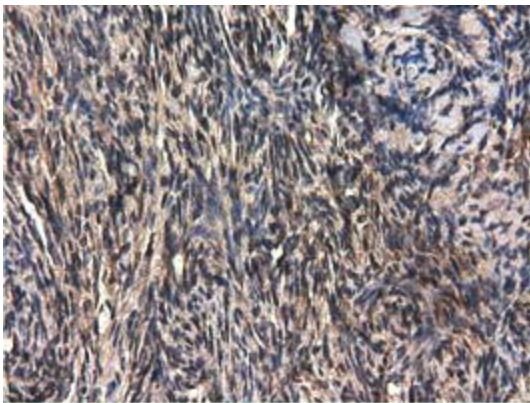
Immunohistochemical staining of paraffin-embedded Carcinoma of Human kidney tissue using anti-QPRT mouse monoclonal antibody. (Heat-induced epitope retrieval by 10mM citric buffer, pH6.0, 100°C for 10min, [TA501524])



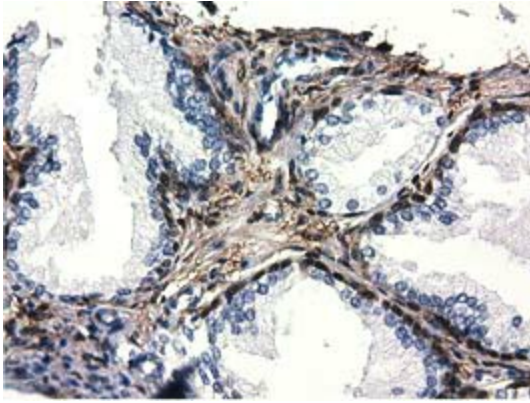
Immunohistochemical staining of paraffin-embedded Human liver tissue within the normal limits using anti-QPRT mouse monoclonal antibody. (Heat-induced epitope retrieval by 10mM citric buffer, pH6.0, 100°C for 10min, [TA501524])



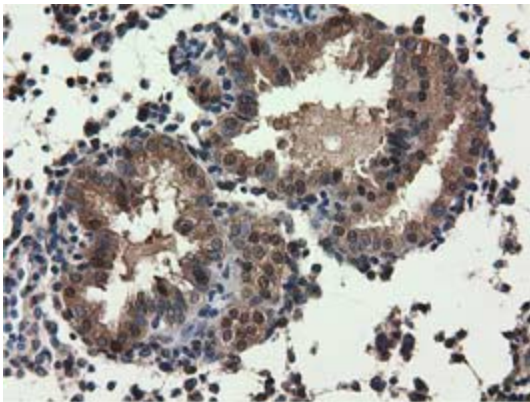
Immunohistochemical staining of paraffin-embedded Adenocarcinoma of Human ovary tissue using anti-QPRT mouse monoclonal antibody. (Heat-induced epitope retrieval by 10mM citric buffer, pH6.0, 100°C for 10min, [TA501524])



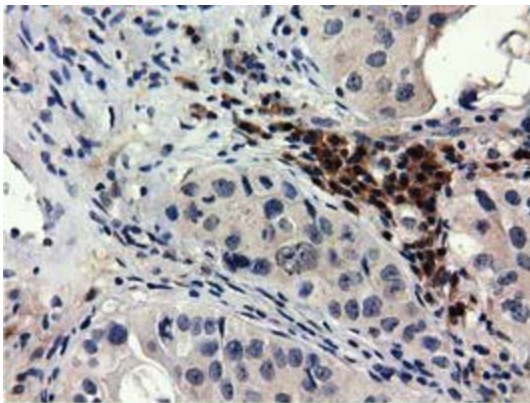
Immunohistochemical staining of paraffin-embedded Human endometrium tissue within the normal limits using anti-QPRT mouse monoclonal antibody. (Heat-induced epitope retrieval by 10mM citric buffer, pH6.0, 100°C for 10min, [TA501524])



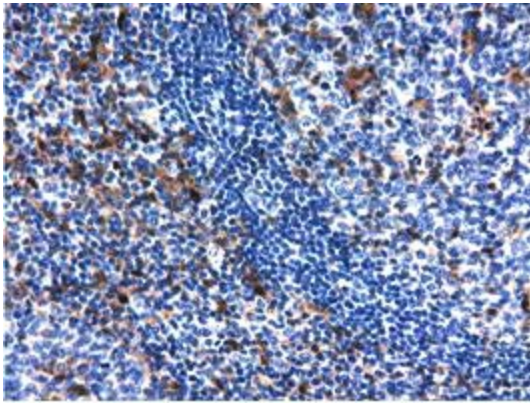
Immunohistochemical staining of paraffin-embedded Human prostate tissue within the normal limits using anti-QPRT mouse monoclonal antibody. (Heat-induced epitope retrieval by 10mM citric buffer, pH6.0, 100°C for 10min, [TA501524])



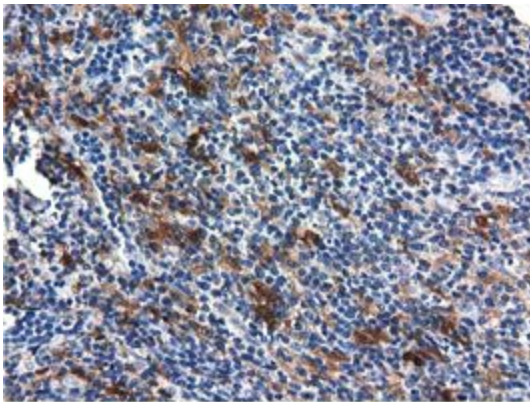
Immunohistochemical staining of paraffin-embedded Carcinoma of Human prostate tissue using anti-QPRT mouse monoclonal antibody. (Heat-induced epitope retrieval by 10mM citric buffer, pH6.0, 100°C for 10min, [TA501524])



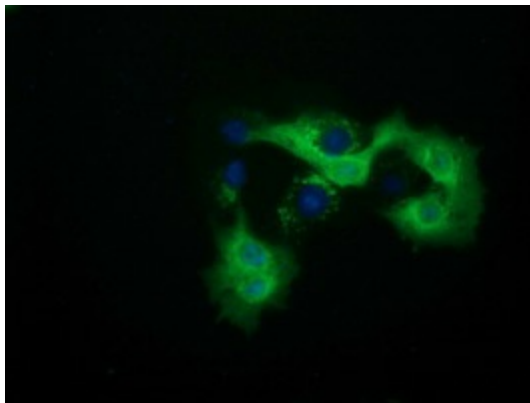
Immunohistochemical staining of paraffin-embedded Carcinoma of Human bladder tissue using anti-QPRT mouse monoclonal antibody. (Heat-induced epitope retrieval by 10mM citric buffer, pH6.0, 100°C for 10min, [TA501524])



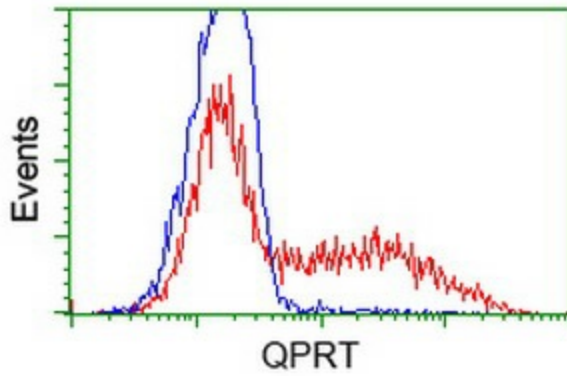
Immunohistochemical staining of paraffin-embedded Human lymph node tissue within the normal limits using anti-QPRT mouse monoclonal antibody. (Heat-induced epitope retrieval by 10mM citric buffer, pH6.0, 100°C for 10min, [TA501524])



Immunohistochemical staining of paraffin-embedded Human lymphoma tissue using anti-QPRT mouse monoclonal antibody. (Heat-induced epitope retrieval by 10mM citric buffer, pH6.0, 100°C for 10min, [TA501524])



Anti-QPRT mouse monoclonal antibody ([TA501524]) immunofluorescent staining of COS7 cells transiently transfected by pCMV6-ENTRY QPRT ([RC202960]).



HEK293T cells transfected with either [RC202960] overexpress plasmid (Red) or empty vector control plasmid (Blue) were immunostained by anti-QPRT antibody ([TA501524]), and then analyzed by flow cytometry.