

Product datasheet for **TA501514BM**

C16orf72 Mouse Monoclonal Antibody (HRP conjugated) [Clone ID: OTI2D1]

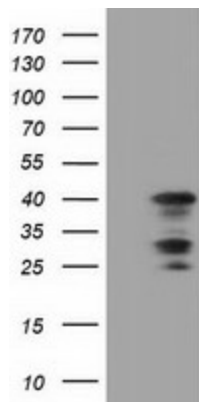
Product data:

Product Type:	Primary Antibodies
Clone Name:	OTI2D1
Applications:	FC, IF, WB
Recommended Dilution:	WB 1:2000, IF 1:100, FLOW 1:100
Reactivity:	Human, Mouse, Rat
Host:	Mouse
Isotype:	IgG1
Clonality:	Monoclonal
Immunogen:	Full length human recombinant protein of human C16orf72 (NP_054836) produced in HEK293T cell.
Formulation:	PBS (pH 7.3) containing 1% BSA, 50% glycerol.
Concentration:	0.5 mg/ml
Purification:	Purified from mouse ascites fluids or tissue culture supernatant by affinity chromatography (protein A/G)
Conjugation:	HRP
Storage:	Store at -20°C as received.
Stability:	Stable for 12 months from date of receipt.
Predicted Protein Size:	30.7 kDa
Gene Name:	chromosome 16 open reading frame 72
Database Link:	NP_054836 Entrez Gene 29035 Human Q14CZ0
Synonyms:	PRO0149

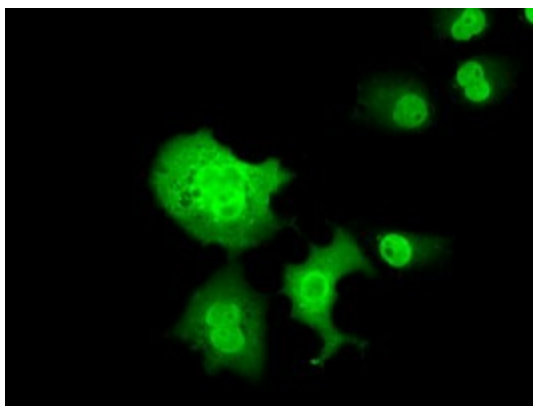


[View online »](#)

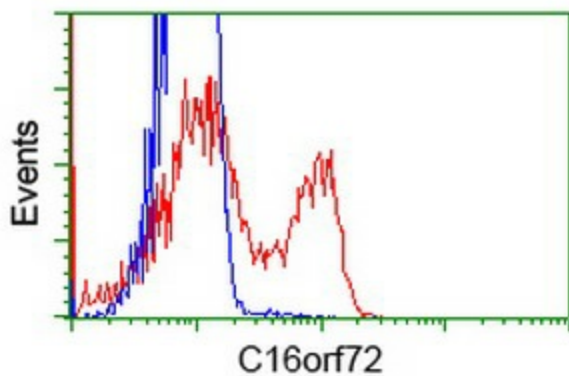
Product images:



HEK293T cells were transfected with the pCMV6-ENTRY control (Cat# [PS100001], Left lane) or pCMV6-ENTRY C16orf72 (Cat# [RC214935], Right lane) cDNA for 48 hrs and lysed. Equivalent amounts of cell lysates (5 ug per lane) were separated by SDS-PAGE and immunoblotted with anti-C16orf72(Cat# [TA501514]). Positive lysates [LY415486] (100ug) and [LC415486] (20ug) can be purchased separately from OriGene.



Anti-C16orf72 mouse monoclonal antibody ([TA501514]) immunofluorescent staining of COS7 cells transiently transfected by pCMV6-ENTRY C16orf72 ([RC214935]).



HEK293T cells transfected with either [RC214935] overexpress plasmid (Red) or empty vector control plasmid (Blue) were immunostained by anti-C16orf72 antibody ([TA501514]), and then analyzed by flow cytometry.