

Product datasheet for **TA501512AM**

RIPPLY2 Mouse Monoclonal Antibody (Biotin conjugated) [Clone ID: OTI1B5]

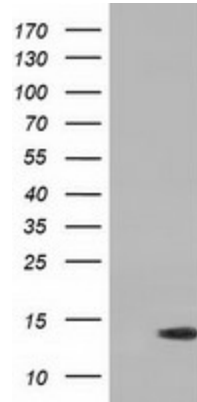
Product data:

| | |
|-------------------------|---|
| Product Type: | Primary Antibodies |
| Clone Name: | OTI1B5 |
| Applications: | FC, WB |
| Recommended Dilution: | WB 1:500, FLOW 1:100 |
| Reactivity: | Human |
| Host: | Mouse |
| Isotype: | IgG1 |
| Clonality: | Monoclonal |
| Immunogen: | Full length human recombinant protein of human RIPPLY2 (NP_001009994) produced in HEK293T cell. |
| Formulation: | PBS (pH 7.3) containing 1% BSA, 50% glycerol and 0.02% sodium azide. |
| Concentration: | 0.5 mg/ml |
| Purification: | Purified from mouse ascites fluids or tissue culture supernatant by affinity chromatography (protein A/G) |
| Conjugation: | Biotin |
| Storage: | Store at -20°C as received. |
| Stability: | Stable for 12 months from date of receipt. |
| Predicted Protein Size: | 13.7 kDa |
| Gene Name: | rippy transcriptional repressor 2 |
| Database Link: | NP_001009994 Entrez Gene 134701 Human Q5TAB7 |
| Synonyms: | C6orf159; dj237115.1; SCDO6 |

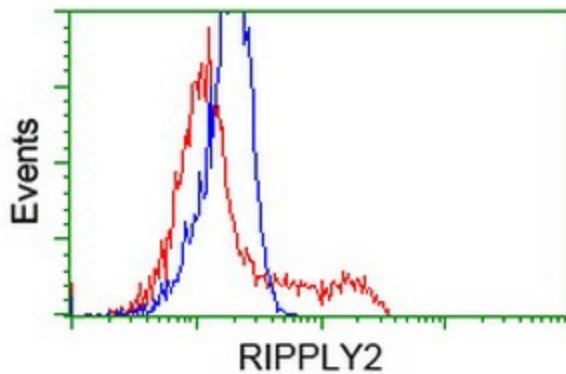


[View online »](#)

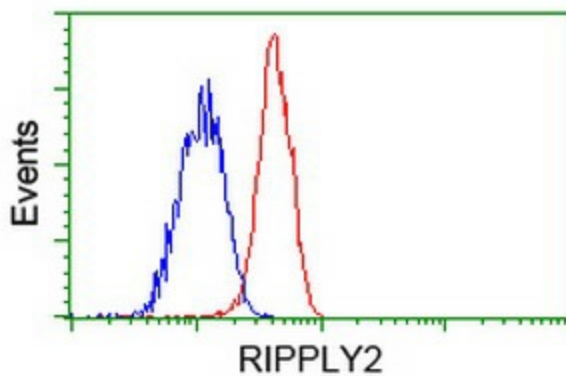
Product images:



HEK293T cells were transfected with the pCMV6-ENTRY control (Cat# [PS100001], Left lane) or pCMV6-ENTRY RIPPLY2 (Cat# [RC220725], Right lane) cDNA for 48 hrs and lysed. Equivalent amounts of cell lysates (5 ug per lane) were separated by SDS-PAGE and immunoblotted with anti-RIPPLY2 (Cat# [TA501512]). Positive lysates [LY423172] (100ug) and [LC423172] (20ug) can be purchased separately from OriGene.



HEK293T cells transfected with either [RC220725] overexpress plasmid (Red) or empty vector control plasmid (Blue) were immunostained by anti-RIPPLY2 antibody ([TA501512]), and then analyzed by flow cytometry.



Flow cytometric Analysis of Jurkat cells, using anti-RIPPLY2 antibody ([TA501512]), (Red), compared to a nonspecific negative control antibody (TA50011), (Blue).