

Product datasheet for **TA501512**

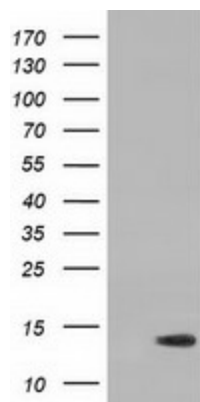
RIPPLY2 Mouse Monoclonal Antibody [Clone ID: OTI1B5]

Product data:

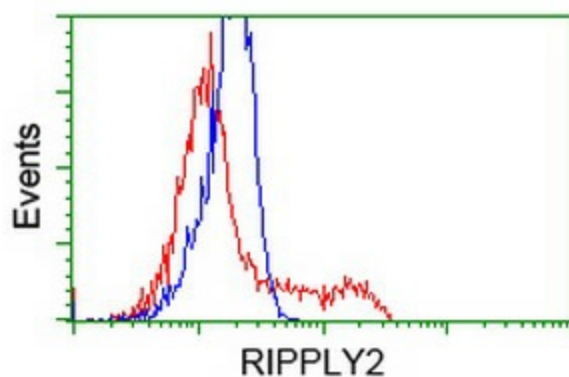
Product Type:	Primary Antibodies
Clone Name:	OTI1B5
Applications:	FC, WB
Recommended Dilution:	WB 1:500, FLOW 1:100
Reactivity:	Human
Host:	Mouse
Isotype:	IgG1
Clonality:	Monoclonal
Immunogen:	Full length human recombinant protein of human RIPPLY2 (NP_001009994) produced in HEK293T cell.
Formulation:	PBS (pH 7.3) containing 1% BSA, 50% glycerol and 0.02% sodium azide.
Concentration:	1 mg/ml
Purification:	Purified from mouse ascites fluids or tissue culture supernatant by affinity chromatography (protein A/G)
Conjugation:	Unconjugated
Storage:	Store at -20°C as received.
Stability:	Stable for 12 months from date of receipt.
Predicted Protein Size:	13.7 kDa
Gene Name:	rippy transcriptional repressor 2
Database Link:	NP_001009994 Entrez Gene 134701 Human Q5TAB7
Synonyms:	C6orf159; dj237l15.1; SCDO6

[View online »](#)

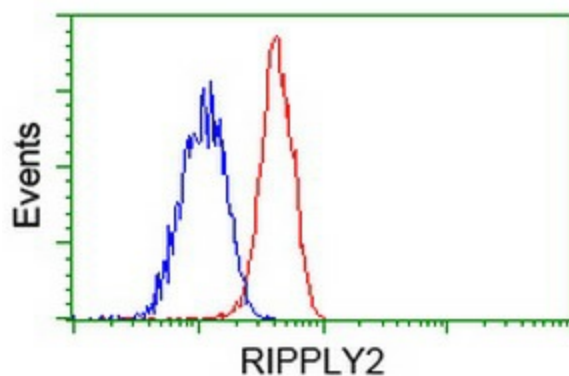
Product images:



HEK293T cells were transfected with the pCMV6-ENTRY control (Cat# [PS100001], Left lane) or pCMV6-ENTRY RIPPLY2 (Cat# [RC220725], Right lane) cDNA for 48 hrs and lysed. Equivalent amounts of cell lysates (5 ug per lane) were separated by SDS-PAGE and immunoblotted with anti-RIPPLY2 (Cat# TA501512). Positive lysates [LY423172] (100ug) and [LC423172] (20ug) can be purchased separately from OriGene.



HEK293T cells transfected with either [RC220725] overexpress plasmid (Red) or empty vector control plasmid (Blue) were immunostained by anti-RIPPLY2 antibody (TA501512), and then analyzed by flow cytometry.



Flow cytometric Analysis of Jurkat cells, using anti-RIPPLY2 antibody (TA501512), (Red), compared to a nonspecific negative control antibody (TA50011), (Blue).