

Product datasheet for **TA501511M**

Cytoplasmic dynein 1 light intermediate chain 1 (DYNC1LI1) Mouse Monoclonal Antibody [Clone ID: OTI1H4]

Product data:

| | |
|-------------------------|--|
| Product Type: | Primary Antibodies |
| Clone Name: | OTI1H4 |
| Applications: | FC, IF, WB |
| Recommended Dilution: | WB 1:2000, IF 1:100, FLOW 1:100 |
| Reactivity: | Human, Mouse, Rat |
| Host: | Mouse |
| Isotype: | IgG2b |
| Clonality: | Monoclonal |
| Immunogen: | Full length human recombinant protein of human DYNC1LI1 (NP_057225) produced in HEK293T cell. |
| Formulation: | PBS (pH 7.3) containing 1% BSA, 50% glycerol and 0.02% sodium azide. |
| Concentration: | 0.4 mg/ml |
| Purification: | Purified from mouse ascites fluids or tissue culture supernatant by affinity chromatography (protein A/G) |
| Conjugation: | Unconjugated |
| Storage: | Store at -20°C as received. |
| Stability: | Stable for 12 months from date of receipt. |
| Predicted Protein Size: | 56.4 kDa |
| Gene Name: | dynein cytoplasmic 1 light intermediate chain 1 |
| Database Link: | NP_057225 Entrez Gene 235661 Mouse Entrez Gene 252902 Rat Entrez Gene 51143 Human Q9Y6G9 |



[View online »](#)

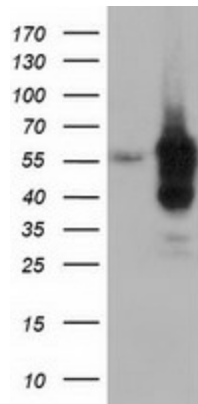
Background:

Acts as one of several non-catalytic accessory components of the cytoplasmic dynein 1 complex that are thought to be involved in linking dynein to cargos and to adapter proteins that regulate dynein function. Cytoplasmic dynein 1 acts as a motor for the intracellular retrograde motility of vesicles and organelles along microtubules. May play a role in binding dynein to membranous organelles or chromosomes. Probably involved in the microtubule-dependent transport of pericentrin. Is required for progress through the spindle assembly checkpoint. The phosphorylated form appears to be involved in the selective removal of MAD1L1 and MAD1L2 but not BUB1B from kinetochores.

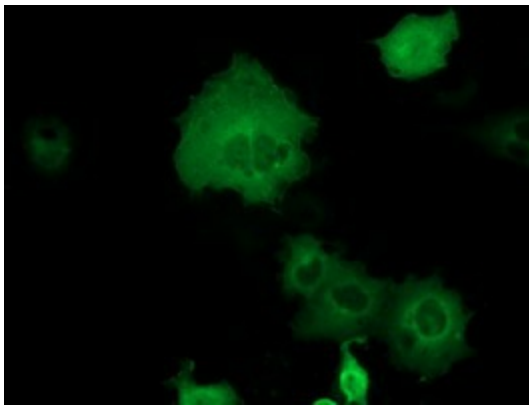
Synonyms:

DLC-A; DNCL1; LIC1

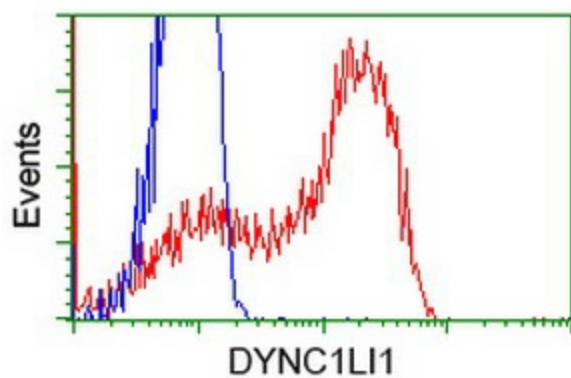
Product images:



HEK293T cells were transfected with the pCMV6-ENTRY control (Left lane) or pCMV6-ENTRY DYNC1LI1 ([RC222010], Right lane) cDNA for 48 hrs and lysed. Equivalent amounts of cell lysates (5 ug per lane) were separated by SDS-PAGE and immunoblotted with anti-DYNC1LI1. Positive lysates [LY414168] (100ug) and [LC414168] (20ug) can be purchased separately from OriGene.



Anti-DYNC1LI1 mouse monoclonal antibody ([TA501511]) immunofluorescent staining of COS7 cells transiently transfected by pCMV6-ENTRY DYNC1LI1 ([RC222010]).



HEK293T cells transfected with either [RC222010] overexpress plasmid (Red) or empty vector control plasmid (Blue) were immunostained by anti-DYNC1LI1 antibody ([TA501511]), and then analyzed by flow cytometry.