

Product datasheet for **TA501500BM**

Cytoplasmic dynein 1 light intermediate chain 1 (DYNC1LI1) Mouse Monoclonal Antibody (HRP conjugated) [Clone ID: OTI1D1]

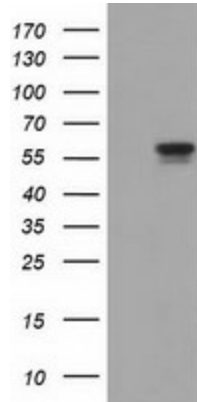
Product data:

Product Type:	Primary Antibodies
Clone Name:	OTI1D1
Applications:	FC, IF, WB
Recommended Dilution:	WB 1:2000, IF 1:100, FLOW 1:100
Reactivity:	Human, Mouse, Rat
Host:	Mouse
Isotype:	IgG1
Clonality:	Monoclonal
Immunogen:	Full length human recombinant protein of human DYNC1LI1 (NP_057225) produced in HEK293T cell.
Formulation:	PBS (pH 7.3) containing 1% BSA, 50% glycerol.
Concentration:	0.5 mg/ml
Purification:	Purified from mouse ascites fluids or tissue culture supernatant by affinity chromatography (protein A/G)
Conjugation:	HRP
Storage:	Store at -20°C as received.
Stability:	Stable for 12 months from date of receipt.
Predicted Protein Size:	56.4 kDa
Gene Name:	dynein cytoplasmic 1 light intermediate chain 1
Database Link:	NP_057225 Entrez Gene 235661 Mouse Entrez Gene 252902 Rat Entrez Gene 51143 Human Q9Y6G9
Synonyms:	DLC-A; DNCL11; LIC1

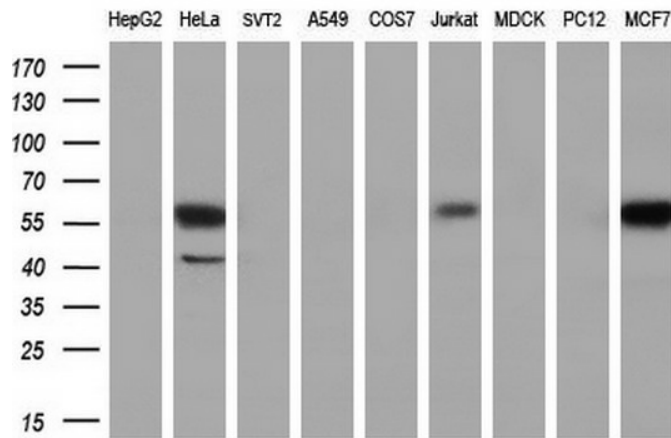


[View online »](#)

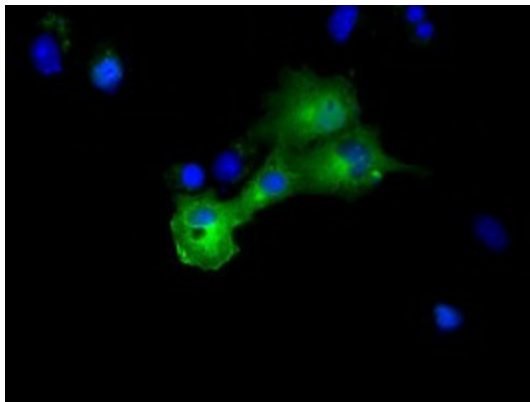
Product images:



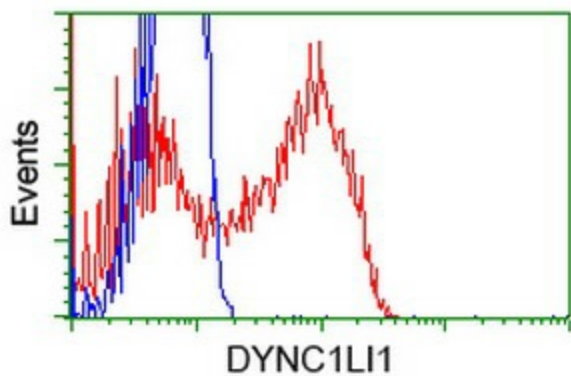
HEK293T cells were transfected with the pCMV6-ENTRY control (Left lane) or pCMV6-ENTRY DYNC1LI1 ([RC222010], Right lane) cDNA for 48 hrs and lysed. Equivalent amounts of cell lysates (5 ug per lane) were separated by SDS-PAGE and immunoblotted with anti-DYNC1LI1. Positive lysates [LY414168] (100ug) and [LC414168] (20ug) can be purchased separately from OriGene.



Western blot analysis of extracts (35ug) from 9 different cell lines by using anti-DYNC1LI1 monoclonal antibody (HepG2: human; HeLa: human; SVT2: mouse; A549: human; COS7: monkey; Jurkat: human; MDCK: canine; PC12: rat; MCF7: human) (1:200).



Anti-DYNC1LI1 mouse monoclonal antibody ([TA501500]) immunofluorescent staining of COS7 cells transiently transfected by pCMV6-ENTRY DYNC1LI1 ([RC222010]).



HEK293T cells transfected with either [RC222010] overexpress plasmid (Red) or empty vector control plasmid (Blue) were immunostained by anti-DYNC1LI1 antibody ([TA501500]), and then analyzed by flow cytometry.