

## Product datasheet for **TA501498AM**

### SLC30A3 Mouse Monoclonal Antibody (Biotin conjugated) [Clone ID: OTI2H6]

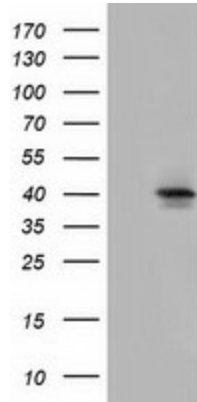
#### Product data:

Product Type:	Primary Antibodies
Clone Name:	OTI2H6
Applications:	FC, IF, WB
Recommended Dilution:	WB 1:500, IF 1:100, FLOW 1:100
Reactivity:	Human, Mouse, Rat
Host:	Mouse
Isotype:	IgG3
Clonality:	Monoclonal
Immunogen:	Full length human recombinant protein of human SLC30A3 (NP_003450) produced in HEK293T cell.
Formulation:	PBS (pH 7.3) containing 1% BSA, 50% glycerol and 0.02% sodium azide.
Concentration:	0.5 mg/ml
Purification:	Purified from mouse ascites fluids or tissue culture supernatant by affinity chromatography (protein A/G)
Conjugation:	Biotin
Storage:	Store at -20°C as received.
Stability:	Stable for 12 months from date of receipt.
Predicted Protein Size:	41.8 kDa
Gene Name:	solute carrier family 30 member 3
Database Link:	<a href="#">NP_003450</a> <a href="#">Entrez Gene 22784 Mouse</a> <a href="#">Entrez Gene 366568 Rat</a> <a href="#">Entrez Gene 7781 Human</a> <a href="#">Q99726</a>
Background:	Involved in accumulation of zinc in synaptic vesicles (By similarity)
Synonyms:	ZNT3
Protein Families:	Secreted Protein, Transmembrane

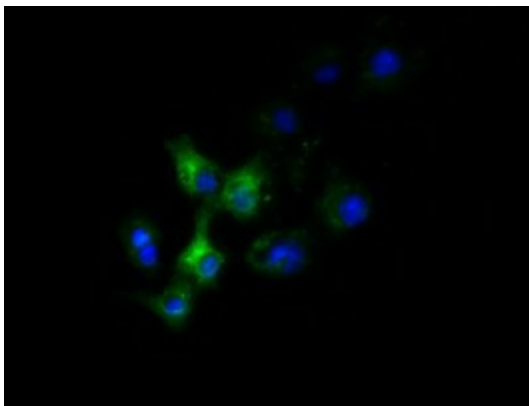


[View online »](#)

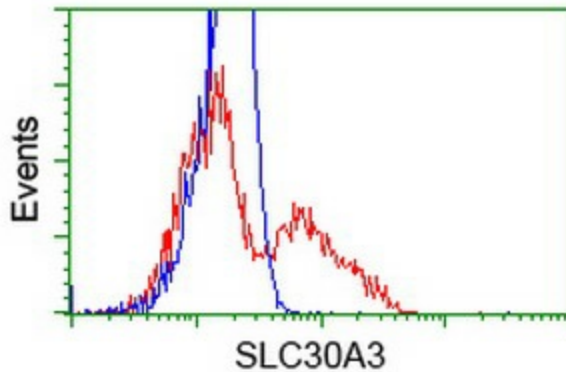
**Product images:**



HEK293T cells were transfected with the pCMV6-ENTRY control (Cat# [PS100001], Left lane) or pCMV6-ENTRY SLC30A3 (Cat# [RC205310], Right lane) cDNA for 48 hrs and lysed. Equivalent amounts of cell lysates (5 ug per lane) were separated by SDS-PAGE and immunoblotted with anti-SLC30A3 (Cat# [TA501498]). Positive lysates [LY401170] (100ug) and [LC401170] (20ug) can be purchased separately from OriGene.



Anti-SLC30A3 mouse monoclonal antibody ([TA501498]) immunofluorescent staining of COS7 cells transiently transfected by pCMV6-ENTRY SLC30A3 ([RC205310]).



HEK293T cells transfected with either [RC205310] overexpress plasmid (Red) or empty vector control plasmid (Blue) were immunostained by anti-SLC30A3 antibody ([TA501498]), and then analyzed by flow cytometry.