

## Product datasheet for **TA501492BM**

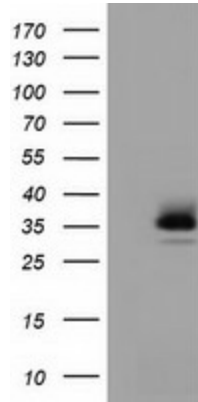
### RFPL1 Mouse Monoclonal Antibody (HRP conjugated) [Clone ID: OTI1D3]

#### Product data:

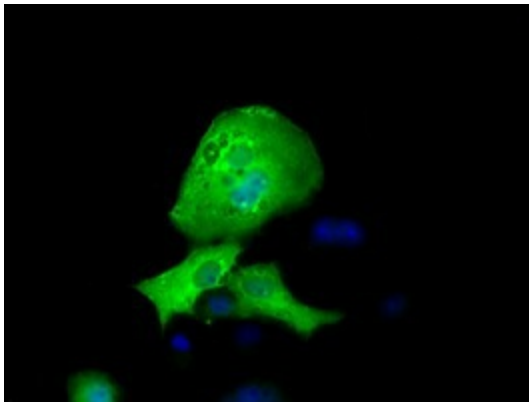
|                         |   |
|-------------------------|---|
| Product Type:           | Primary Antibodies  |
| Clone Name:             | OTI1D3  |
| Applications:           | FC, IF, WB  |
| Recommended Dilution:   | WB 1:2000, IF 1:100, FLOW 1:100   |
| Reactivity:             | Human   |
| Host:                   | Mouse   |
| Isotype:                | IgG2a   |
| Clonality:              | Monoclonal  |
| Immunogen:              | Full length human recombinant protein of human RFPL1 (NP_066306) produced in HEK293T cell.                |
| Formulation:            | PBS (pH 7.3) containing 1% BSA, 50% glycerol.   |
| Concentration:          | 0.5 mg/ml   |
| Purification:           | Purified from mouse ascites fluids or tissue culture supernatant by affinity chromatography (protein A/G) |
| Conjugation:            | HRP   |
| Storage:                | Store at -20°C as received.   |
| Stability:              | Stable for 12 months from date of receipt.  |
| Predicted Protein Size: | 35.3 kDa  |
| Gene Name:              | ret finger protein like 1   |
| Database Link:          | <a href="#">NP_066306</a><br><a href="#">Entrez Gene 5988 Human</a><br><a href="#">O75677</a>             |
| Synonyms:               | RNF78   |
| Protein Families:       | Druggable Genome  |



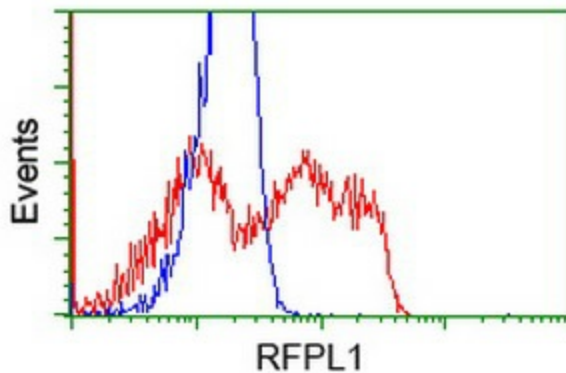
[View online »](#)

**Product images:**


HEK293T cells were transfected with the pCMV6-ENTRY control (Cat# [PS100001], Left lane) or pCMV6-ENTRY RFPL1 (Cat# [RC211141], Right lane) cDNA for 48 hrs and lysed. Equivalent amounts of cell lysates (5 ug per lane) were separated by SDS-PAGE and immunoblotted with anti-RFPL1 (Cat# [TA501492]). Positive lysates [LY412149] (100ug) and [LC412149] (20ug) can be purchased separately from OriGene.



Anti-RFPL1 mouse monoclonal antibody ([TA501492]) immunofluorescent staining of COS7 cells transiently transfected by pCMV6-ENTRY RFPL1 ([RC211141]).



HEK293T cells transfected with either [RC211141] overexpress plasmid (Red) or empty vector control plasmid (Blue) were immunostained by anti-RFPL1 antibody ([TA501492]), and then analyzed by flow cytometry.