

Product datasheet for **TA501492**

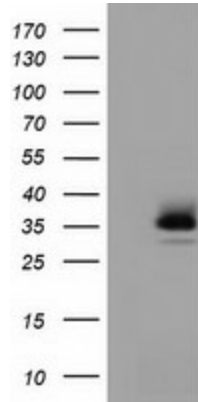
RFPL1 Mouse Monoclonal Antibody [Clone ID: OTI1D3]

Product data:

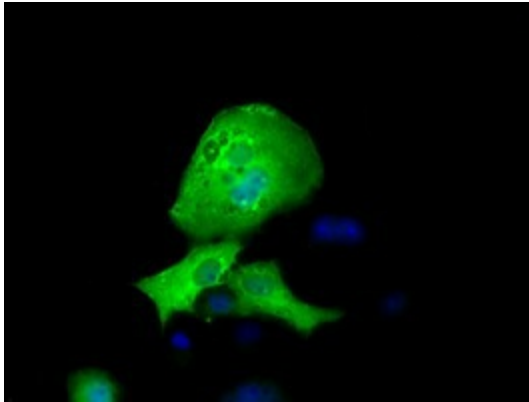
Product Type:	Primary Antibodies
Clone Name:	OTI1D3
Applications:	FC, IF, WB
Recommended Dilution:	WB 1:2000, IF 1:100, FLOW 1:100
Reactivity:	Human
Host:	Mouse
Isotype:	IgG2a
Clonality:	Monoclonal
Immunogen:	Full length human recombinant protein of human RFPL1 (NP_066306) produced in HEK293T cell.
Formulation:	PBS (pH 7.3) containing 1% BSA, 50% glycerol and 0.02% sodium azide.
Concentration:	0.72 mg/ml
Purification:	Purified from mouse ascites fluids or tissue culture supernatant by affinity chromatography (protein A/G)
Conjugation:	Unconjugated
Storage:	Store at -20°C as received.
Stability:	Stable for 12 months from date of receipt.
Predicted Protein Size:	35.3 kDa
Gene Name:	ret finger protein like 1
Database Link:	NP_066306 Entrez Gene 5988 Human O75677
Synonyms:	RNF78
Protein Families:	Druggable Genome



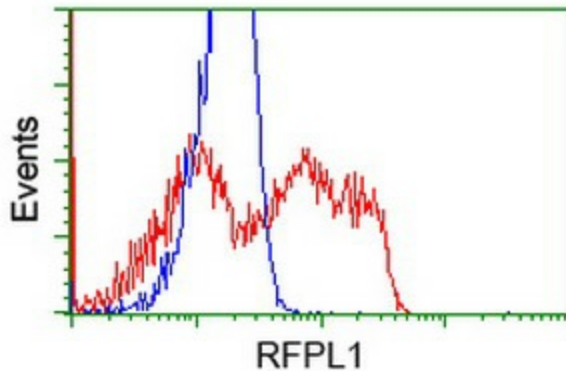
[View online »](#)

Product images:

HEK293T cells were transfected with the pCMV6-ENTRY control (Cat# [PS100001], Left lane) or pCMV6-ENTRY RFPL1 (Cat# [RC211141], Right lane) cDNA for 48 hrs and lysed. Equivalent amounts of cell lysates (5 ug per lane) were separated by SDS-PAGE and immunoblotted with anti-RFPL1 (Cat# TA501492). Positive lysates [LY412149] (100ug) and [LC412149] (20ug) can be purchased separately from OriGene.



Anti-RFPL1 mouse monoclonal antibody (TA501492) immunofluorescent staining of COS7 cells transiently transfected by pCMV6-ENTRY RFPL1 ([RC211141]).



HEK293T cells transfected with either [RC211141] overexpress plasmid (Red) or empty vector control plasmid (Blue) were immunostained by anti-RFPL1 antibody (TA501492), and then analyzed by flow cytometry.