

Product datasheet for **TA501491S**

SH3 containing Grb 2 like 1 protein (SH3GL1) Mouse Monoclonal Antibody [Clone ID: OTI2F5]

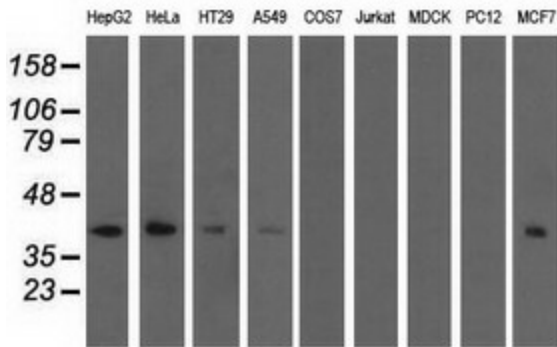
Product data:

Product Type:	Primary Antibodies
Clone Name:	OTI2F5
Applications:	FC, IF, IHC, WB
Recommended Dilution:	WB 1:2000, IHC 1:150, IF 1:100, FLOW 1:100
Reactivity:	Human, Mouse, Rat
Host:	Mouse
Isotype:	IgG1
Clonality:	Monoclonal
Immunogen:	Full length human recombinant protein of human SH3GL1 (NP_003016) produced in HEK293T cell.
Formulation:	PBS (pH 7.3) containing 1% BSA, 50% glycerol and 0.02% sodium azide.
Concentration:	0.64 mg/ml
Purification:	Purified from mouse ascites fluids or tissue culture supernatant by affinity chromatography (protein A/G)
Conjugation:	Unconjugated
Storage:	Store at -20°C as received.
Stability:	Stable for 12 months from date of receipt.
Predicted Protein Size:	41.3 kDa
Gene Name:	SH3 domain containing GRB2 like 1, endophilin A2
Database Link:	NP_003016 Entrez Gene 20405 Mouse Entrez Gene 81922 Rat Entrez Gene 6455 Human Q99961
Synonyms:	CNSA1; EEN; SH3D2B; SH3P8
Protein Families:	Druggable Genome
Protein Pathways:	Endocytosis

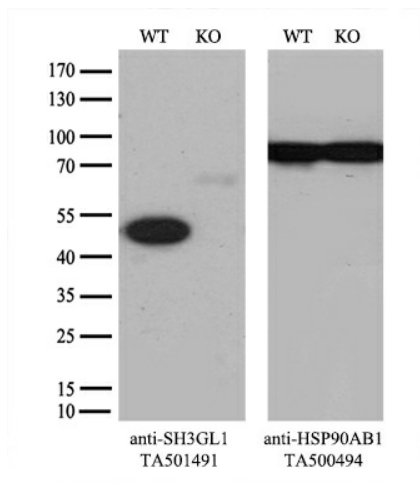


[View online »](#)

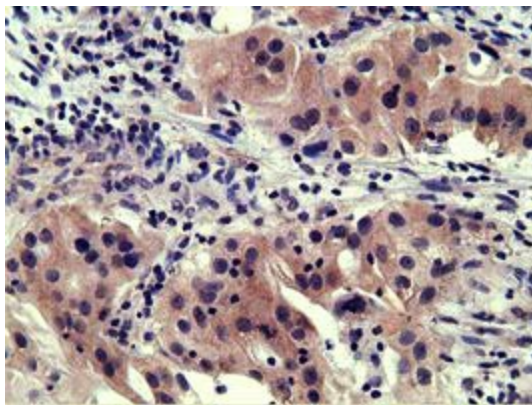
Product images:



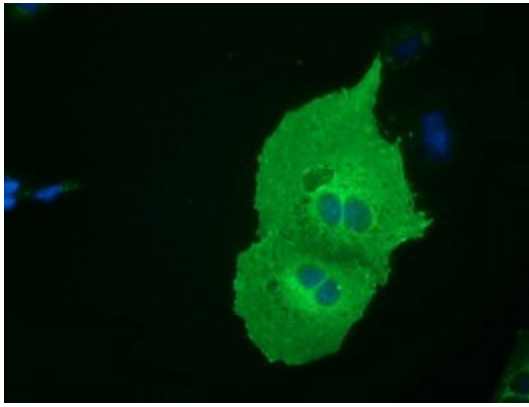
Western blot analysis of extracts (35ug) from 9 different cell lines by using anti-SH3GL1 monoclonal antibody.



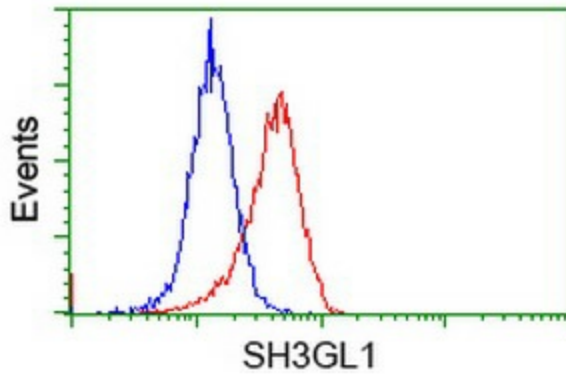
Equivalent amounts of cell lysates (10 ug per lane) of wild-type 293T cells (WT, Cat# LC810293T) and SH3GL1-Knockout 293T cells (KO, Cat# [LC812166]) were separated by SDS-PAGE and immunoblotted with anti-SH3GL1 monoclonal antibody [TA501491], (1:500). Then the blotted membrane was stripped and reprobed with anti-HSP90AB1 antibody ([TA500494]) as a loading control.



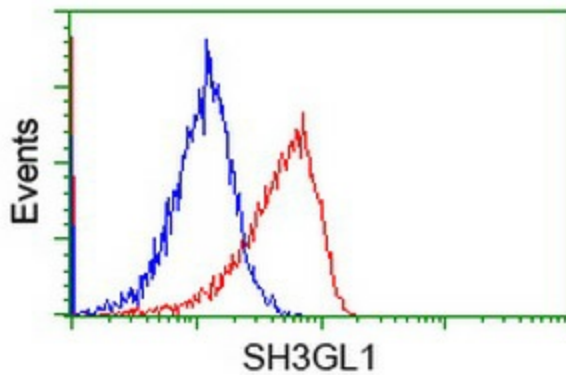
Immunohistochemical staining of paraffin-embedded Carcinoma of Human bladder tissue using anti-SH3GL1 mouse monoclonal antibody. (Heat-induced epitope retrieval by 10mM citric buffer, pH6.0, 100°C for 10min, [TA501491])



Anti-SH3GL1 mouse monoclonal antibody ([TA501491]) immunofluorescent staining of COS7 cells transiently transfected by pCMV6-ENTRY SH3GL1 ([RC201552]).



Flow cytometric Analysis of HeLa cells, using anti-SH3GL1 antibody ([TA501491]), (Red), compared to a nonspecific negative control antibody (TA50011), (Blue).



Flow cytometric Analysis of Jurkat cells, using anti-SH3GL1 antibody ([TA501491]), (Red), compared to a nonspecific negative control antibody (TA50011), (Blue).