

## Product datasheet for **TA501483BM**

### **mu Crystallin (CRYM) Mouse Monoclonal Antibody (HRP conjugated) [Clone ID: OTI1G7]**

#### Product data:

|                         |  |
|-------------------------|--|
| Product Type:           | Primary Antibodies   |
| Clone Name:             | OTI1G7   |
| Applications:           | FC, IF, IHC, WB  |
| Recommended Dilution:   | WB 1:500~2000, IHC 1:150, IF 1:100, FLOW 1:100   |
| Reactivity:             | Human, Rat, Mouse  |
| Host:                   | Mouse  |
| Isotype:                | IgG2b  |
| Clonality:              | Monoclonal   |
| Immunogen:              | Full length human recombinant protein of human CRYM (NP_001879) produced in HEK293T cell.  |
| Formulation:            | PBS (pH 7.3) containing 1% BSA, 50% glycerol.  |
| Concentration:          | 0.5 mg/ml  |
| Purification:           | Purified from mouse ascites fluids or tissue culture supernatant by affinity chromatography (protein A/G)  |
| Conjugation:            | HRP  |
| Storage:                | Store at -20°C as received.  |
| Stability:              | Stable for 12 months from date of receipt.   |
| Predicted Protein Size: | 33.6 kDa   |
| Gene Name:              | crystallin mu  |
| Database Link:          | <a href="#">NP_001879</a><br><a href="#">Entrez Gene 12971 Mouse</a> <a href="#">Entrez Gene 117024 Rat</a> <a href="#">Entrez Gene 1428 Human</a><br><a href="#">Q14894</a> |



[View online »](#)

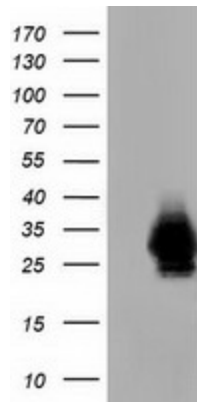
**Background:**

Crystallins are separated into two classes: taxon-specific and ubiquitous. The former class is also called phylogenetically-restricted crystallins. The latter class constitutes the major proteins of vertebrate eye lens and maintains the transparency and refractive index of the lens. This gene encodes a taxon-specific crystallin protein that binds NADPH and has sequence similarity to bacterial ornithine cyclodeaminases. The encoded protein does not perform a structural role in lens tissue, and instead it binds thyroid hormone for possible regulatory or developmental roles. Mutations in this gene have been associated with autosomal dominant non-syndromic deafness. Multiple alternatively spliced transcript variants have been found for this gene. [provided by RefSeq]

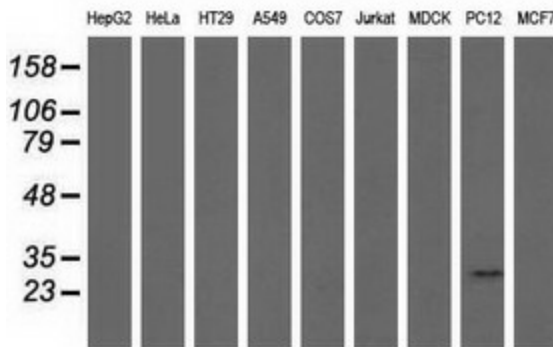
**Synonyms:**

DFNA40; THBP

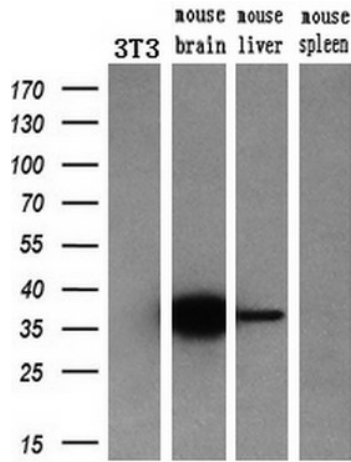
**Product images:**



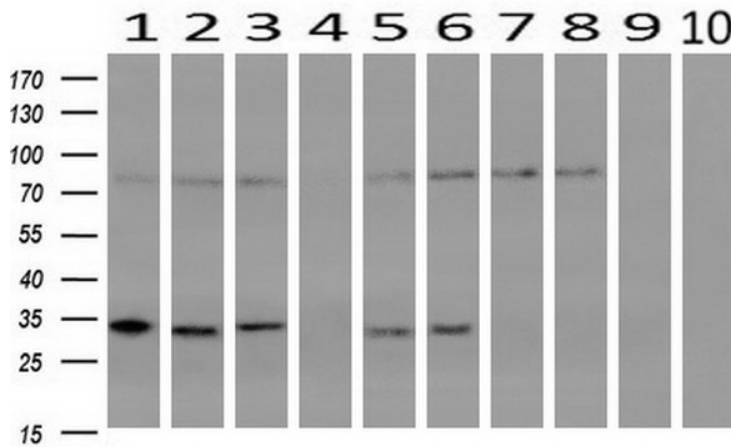
HEK293T cells were transfected with the pCMV6-ENTRY control (Cat# [PS100001], Left lane) or pCMV6-ENTRY CRYM (Cat# [RC218123], Right lane) cDNA for 48 hrs and lysed. Equivalent amounts of cell lysates (5 ug per lane) were separated by SDS-PAGE and immunoblotted with anti-CRYM(Cat# [TA501483]). Positive lysates [LY419685] (100ug) and [LC419685] (20ug) can be purchased separately from OriGene.



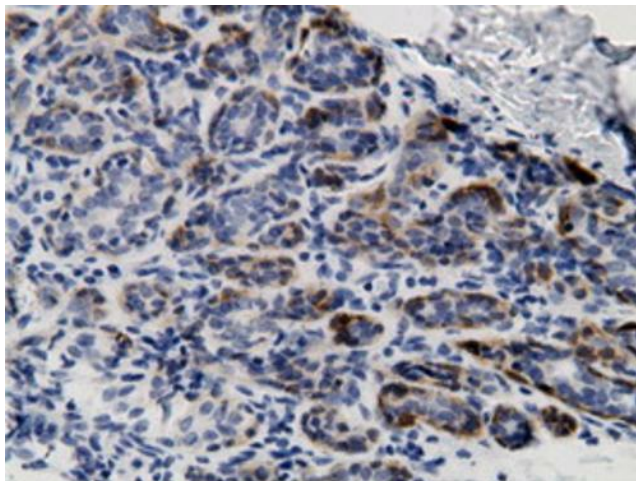
Western blot analysis of extracts (35ug) from 9 different cell lines by using anti-CRYM monoclonal antibody.



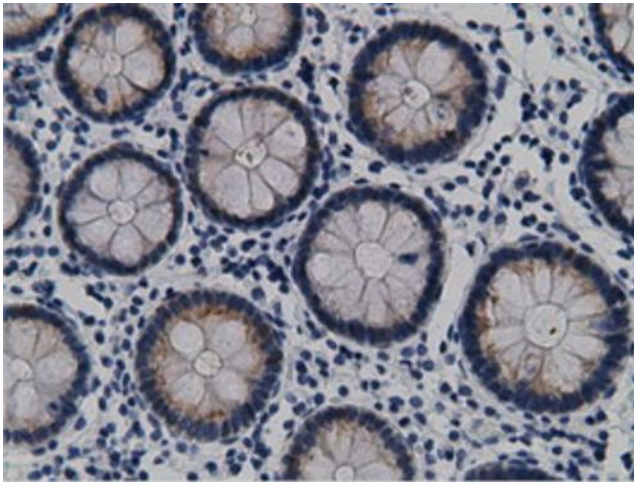
Western blot analysis of extracts (10ug) from a mouse cell line and 3 different mouse tissues by using anti-CRYM monoclonal antibody (1:200).



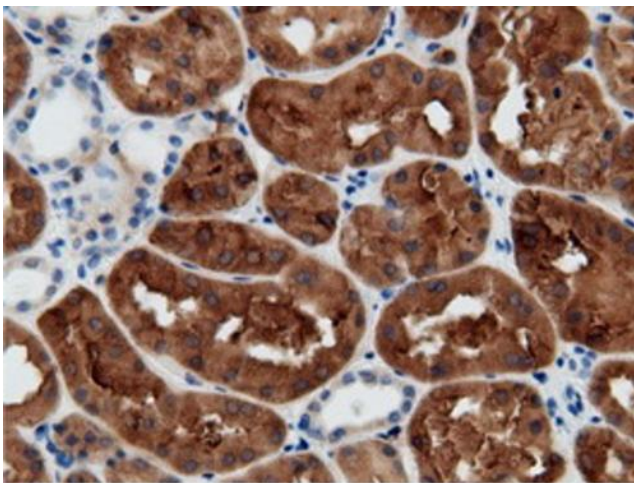
Western blot analysis of extracts (10ug) from 10 Human tissue by using anti-CRYM monoclonal antibody at 1:200 (1: Testis; 2: Omentum; 3: Uterus; 4: Breast; 5: Brain; 6: Liver; 7: Ovary; 8: Thyroid gland; 9: colon; 10: spleen).



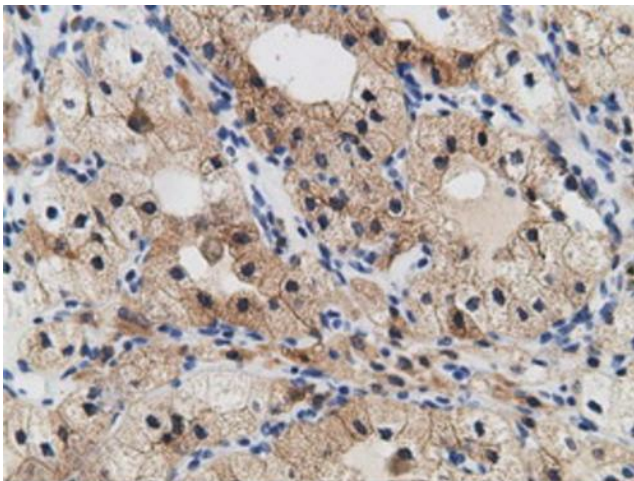
Immunohistochemical staining of paraffin-embedded Human breast tissue within the normal limits using anti-CRYM mouse monoclonal antibody. (Heat-induced epitope retrieval by 10mM citric buffer, pH6.0, 100°C for 10min, [TA501483])



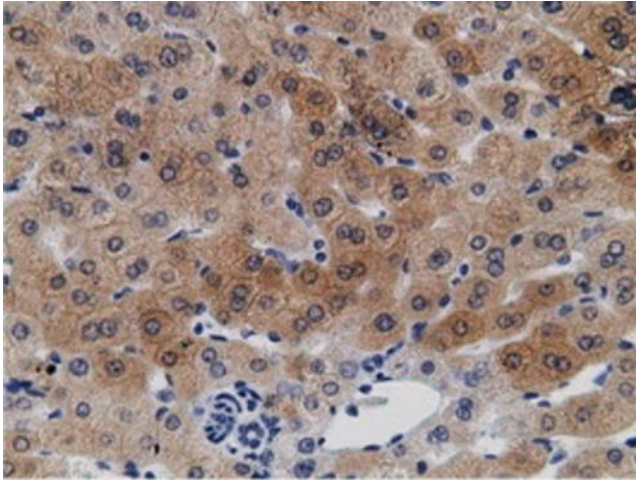
Immunohistochemical staining of paraffin-embedded Human colon tissue within the normal limits using anti-CRYM mouse monoclonal antibody. (Heat-induced epitope retrieval by 10mM citric buffer, pH6.0, 100°C for 10min, [TA501483])



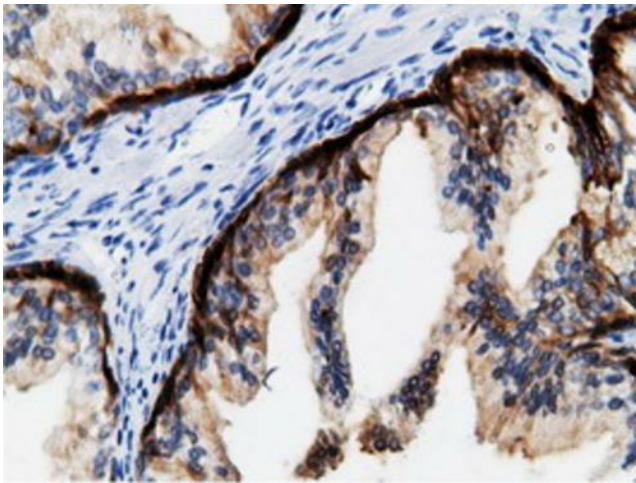
Immunohistochemical staining of paraffin-embedded Human Kidney tissue within the normal limits using anti-CRYM mouse monoclonal antibody. (Heat-induced epitope retrieval by 10mM citric buffer, pH6.0, 100°C for 10min, [TA501483])



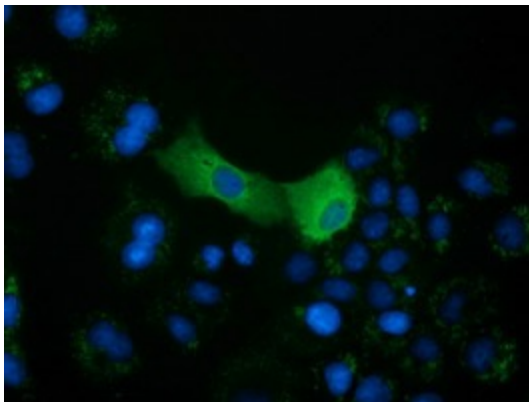
Immunohistochemical staining of paraffin-embedded Carcinoma of Human kidney tissue using anti-CRYM mouse monoclonal antibody. (Heat-induced epitope retrieval by 10mM citric buffer, pH6.0, 100°C for 10min, [TA501483])



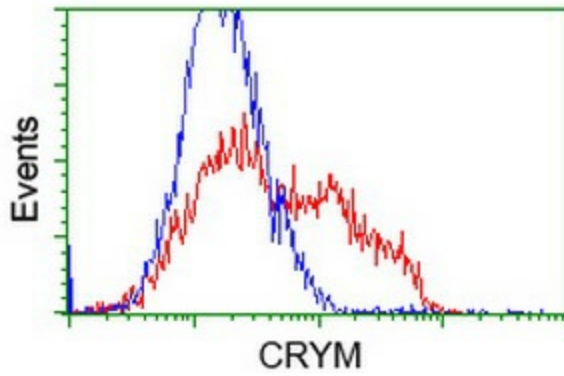
Immunohistochemical staining of paraffin-embedded Human liver tissue within the normal limits using anti-CRYM mouse monoclonal antibody. (Heat-induced epitope retrieval by 10mM citric buffer, pH6.0, 100°C for 10min, [TA501483])



Immunohistochemical staining of paraffin-embedded Human prostate tissue within the normal limits using anti-CRYM mouse monoclonal antibody. (Heat-induced epitope retrieval by 10mM citric buffer, pH6.0, 100°C for 10min, [TA501483])



Anti-CRYM mouse monoclonal antibody ([TA501483]) immunofluorescent staining of COS7 cells transiently transfected by pCMV6-ENTRY CRYM ([RC218123]).



HEK293T cells transfected with either [RC218123] overexpress plasmid (Red) or empty vector control plasmid (Blue) were immunostained by anti-CRYM antibody ([TA501483]), and then analyzed by flow cytometry.