

## Product datasheet for **TA501481S**

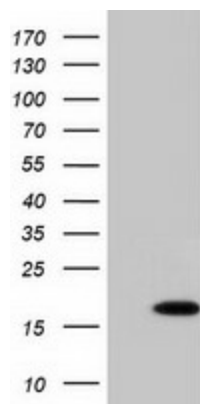
### **C10orf82 Mouse Monoclonal Antibody [Clone ID: OTI1G4]**

#### **Product data:**

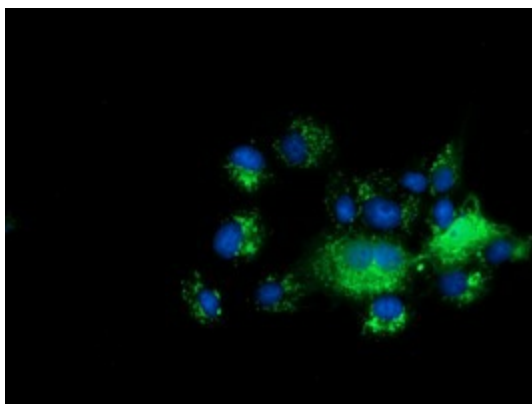
Product Type:	Primary Antibodies
Clone Name:	OTI1G4
Applications:	IF, WB
Recommended Dilution:	WB 1:2000, IF 1:100
Reactivity:	Human
Host:	Mouse
Isotype:	IgG1
Clonality:	Monoclonal
Immunogen:	Full length human recombinant protein of human C10orf82 (NP_653262) produced in HEK293T cell.
Formulation:	PBS (pH 7.3) containing 1% BSA, 50% glycerol and 0.02% sodium azide.
Concentration:	0.43 mg/ml
Purification:	Purified from mouse ascites fluids or tissue culture supernatant by affinity chromatography (protein A/G)
Conjugation:	Unconjugated
Storage:	Store at -20°C as received.
Stability:	Stable for 12 months from date of receipt.
Predicted Protein Size:	17.6 kDa
Gene Name:	chromosome 10 open reading frame 82
Database Link:	<a href="#">NP_653262</a> <a href="#">Entrez Gene 143379 Human</a> <a href="#">Q8WW14</a>
Synonyms:	FLJ40268; MGC33547



[View online »](#)

**Product images:**

HEK293T cells were transfected with the pCMV6-ENTRY control (Cat# [PS100001], Left lane) or pCMV6-ENTRY C10orf82 (Cat# [RC206202], Right lane) cDNA for 48 hrs and lysed. Equivalent amounts of cell lysates (5 ug per lane) were separated by SDS-PAGE and immunoblotted with anti-C10orf82 (Cat# [TA501481]). Positive lysates [LY408200] (100ug) and [LC408200] (20ug) can be purchased separately from OriGene.



Anti-C10orf82 mouse monoclonal antibody ([TA501481]) immunofluorescent staining of COS7 cells transiently transfected by pCMV6-ENTRY C10orf82 ([RC206202]).