

## Product datasheet for **TA501480AM**

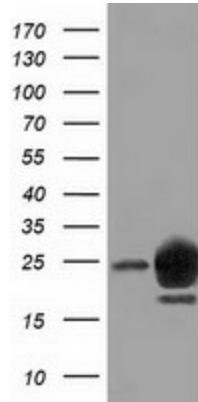
### **LIN7 (LIN7B) Mouse Monoclonal Antibody (Biotin conjugated) [Clone ID: OTI1F11]**

#### **Product data:**

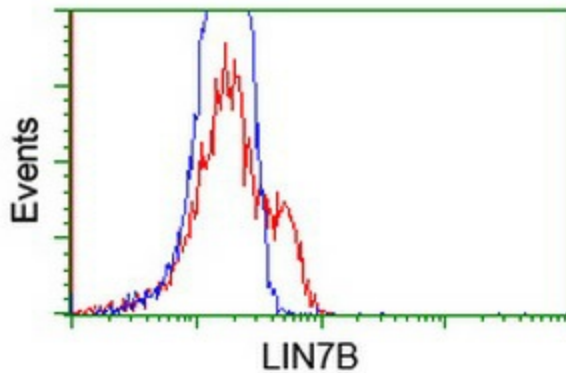
Product Type:	Primary Antibodies
Clone Name:	OTI1F11
Applications:	FC, WB
Recommended Dilution:	WB 1:2000, FLOW 1:100
Reactivity:	Human, Mouse, Rat
Host:	Mouse
Isotype:	IgG2b
Clonality:	Monoclonal
Immunogen:	Full length human recombinant protein of human LIN7B (NP_071448) produced in HEK293T cell.
Formulation:	PBS (pH 7.3) containing 1% BSA, 50% glycerol and 0.02% sodium azide.
Concentration:	0.5 mg/ml
Purification:	Purified from mouse ascites fluids or tissue culture supernatant by affinity chromatography (protein A/G)
Conjugation:	Biotin
Storage:	Store at -20°C as received.
Stability:	Stable for 12 months from date of receipt.
Predicted Protein Size:	22.7 kDa
Gene Name:	lin-7 homolog B, crumbs cell polarity complex component
Database Link:	<a href="#">NP_071448</a> <a href="#">Entrez Gene 64130 Human</a> <a href="#">Q9HAP6</a>
Synonyms:	LIN-7B; MALS-2; MALS2; VELI2
Protein Families:	Druggable Genome



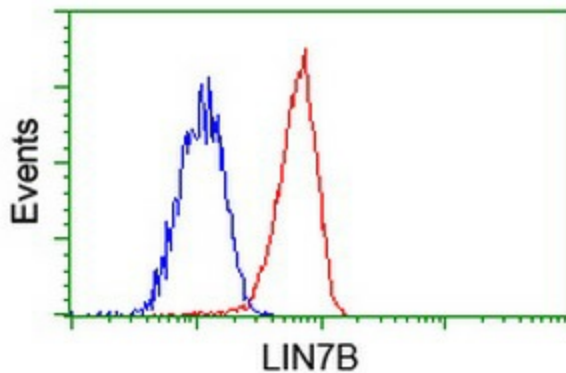
[View online »](#)

**Product images:**


HEK293T cells were transfected with the pCMV6-ENTRY control (Left lane) or pCMV6-ENTRY LIN7B ([RC205598], Right lane) cDNA for 48 hrs and lysed. Equivalent amounts of cell lysates (5 ug per lane) were separated by SDS-PAGE and immunoblotted with anti-LIN7B. Positive lysates [LY411720] (100ug) and [LC411720] (20ug) can be purchased separately from OriGene.



HEK293T cells transfected with either [RC205598] overexpress plasmid (Red) or empty vector control plasmid (Blue) were immunostained by anti-LIN7B antibody ([TA501480]), and then analyzed by flow cytometry.



Flow cytometric Analysis of Jurkat cells, using anti-LIN7B antibody ([TA501480]), (Red), compared to a nonspecific negative control antibody (TA50011), (Blue).