

Product datasheet for **TA501471M**

PAICS Mouse Monoclonal Antibody [Clone ID: OTI8A1]

Product data:

Product Type:	Primary Antibodies
Clone Name:	OTI8A1
Applications:	FC, IF, WB
Recommended Dilution:	WB 1:500~2000, IF 1:100, FLOW 1:100
Reactivity:	Human, Mouse, Rat
Host:	Mouse
Isotype:	IgG2b
Clonality:	Monoclonal
Immunogen:	Full length human recombinant protein of human PAICS (NP_006443) produced in HEK293T cell.
Formulation:	PBS (pH 7.3) containing 1% BSA, 50% glycerol and 0.02% sodium azide.
Concentration:	1 mg/ml
Purification:	Purified from mouse ascites fluids or tissue culture supernatant by affinity chromatography (protein A/G)
Conjugation:	Unconjugated
Storage:	Store at -20°C as received.
Stability:	Stable for 12 months from date of receipt.
Predicted Protein Size:	46.9 kDa
Gene Name:	phosphoribosylaminoimidazole carboxylase and phosphoribosylaminoimidazolesuccinocarboxamide synthase
Database Link:	NP_006443 Entrez Gene 67054 Mouse Entrez Gene 140946 Rat Entrez Gene 10606 Human P22234


[View online »](#)

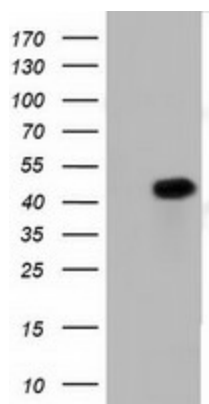
Background: This gene encodes a bifunctional enzyme containing phosphoribosylaminoimidazole carboxylase activity in its N-terminal region and phosphoribosylaminoimidazole succinocarboxamide synthetase in its C-terminal region. It catalyzes steps 6 and 7 of purine biosynthesis. The gene is closely linked and divergently transcribed with a locus that encodes an enzyme in the same pathway, and transcription of the two genes is coordinately regulated. The human genome contains several pseudogenes of this gene. Multiple transcript variants encoding different isoforms have been found for this gene. [provided by RefSeq]

Synonyms: ADE2; ADE2H1; AIRC; PAIS

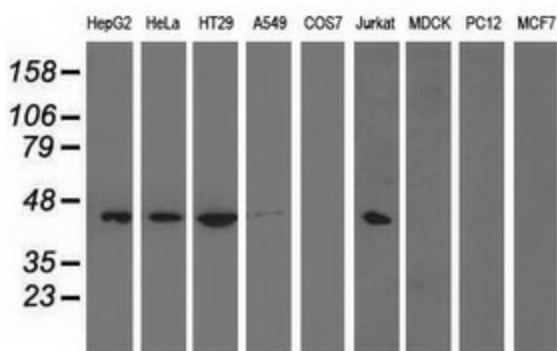
Protein Families: Druggable Genome

Protein Pathways: Metabolic pathways, Purine metabolism

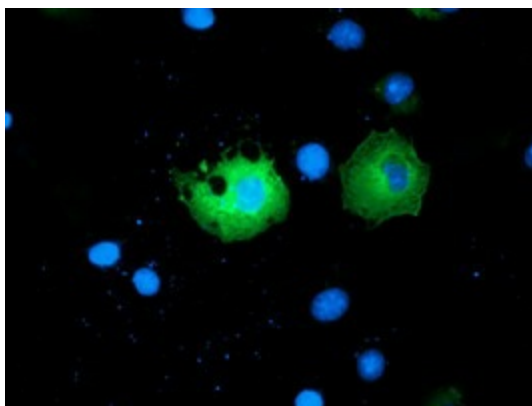
Product images:



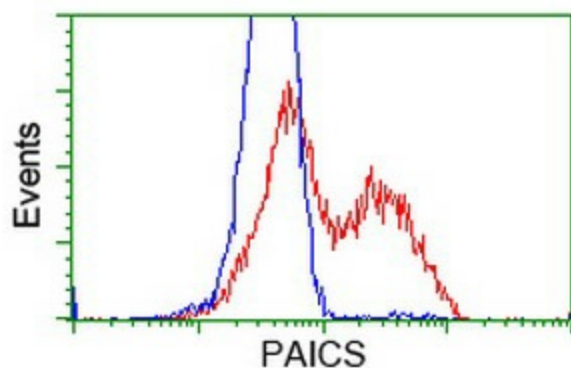
HEK293T cells were transfected with the pCMV6-ENTRY control (Left lane) or pCMV6-ENTRY PAICS [RC215225], Right lane) cDNA for 48 hrs and lysed. Equivalent amounts of cell lysates (5 ug per lane) were separated by SDS-PAGE and immunoblotted with anti-PAICS. Positive lysates [LY416636] (100ug) and [LC416636] (20ug) can be purchased separately from OriGene.



Western blot analysis of extracts (35ug) from 9 different cell lines by using anti-PAICS monoclonal antibody.



Anti-PAICS mouse monoclonal antibody ([TA501471]) immunofluorescent staining of COS7 cells transiently transfected by pCMV6-ENTRY PAICS ([RC215225]).



HEK293T cells transfected with either [RC215225] overexpress plasmid (Red) or empty vector control plasmid (Blue) were immunostained by anti-PAICS antibody ([TA501471]), and then analyzed by flow cytometry.