

Product datasheet for **TA501460S**

Ephrin A2 (EFNA2) Mouse Monoclonal Antibody [Clone ID: OTI2B7]

Product data:

Product Type:	Primary Antibodies
Clone Name:	OTI2B7
Applications:	IF, WB
Recommended Dilution:	WB 1:500, IF 1:100
Reactivity:	Human, Mouse, Rat
Host:	Mouse
Isotype:	IgG2b
Clonality:	Monoclonal
Immunogen:	Full length human recombinant protein of human EFNA2 (NP_001396) produced in HEK293T cell.
Formulation:	PBS (pH 7.3) containing 1% BSA, 50% glycerol and 0.02% sodium azide.
Concentration:	1 mg/ml
Purification:	Purified from mouse ascites fluids or tissue culture supernatant by affinity chromatography (protein A/G)
Conjugation:	Unconjugated
Storage:	Store at -20°C as received.
Stability:	Stable for 12 months from date of receipt.
Predicted Protein Size:	21.3 kDa
Gene Name:	ephrin A2
Database Link:	NP_001396 Entrez Gene 13637 Mouse Entrez Gene 1943 Human O43921



[View online »](#)

Background:

This gene encodes a member of the ephrin family. The protein is composed of a signal sequence, a receptor-binding region, a spacer region, and a hydrophobic region. The EPH and EPH-related receptors comprise the largest subfamily of receptor protein-tyrosine kinases and have been implicated in mediating developmental events, particularly in the nervous system. Based on their structures and sequence relationships, ephrins are divided into the ephrin-A (EFNA) class, which are anchored to the membrane by a glycosylphosphatidylinositol linkage, and the ephrin-B (EFNB) class, which are transmembrane proteins. Posttranslational modifications determine whether this protein localizes to the nucleus or the cytoplasm. [provided by RefSeq]

Synonyms:

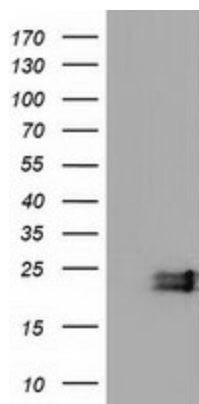
ELF-1; EPLG6; HEK7-L; LERK-6; LERK6

Protein Families:

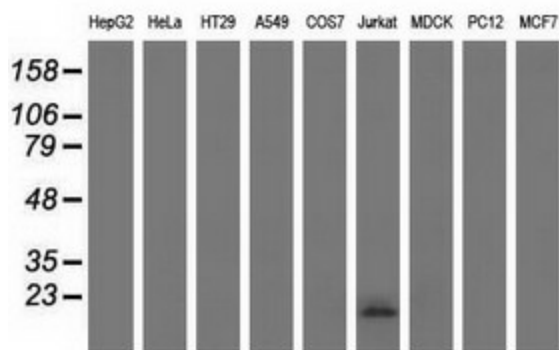
Druggable Genome

Protein Pathways:

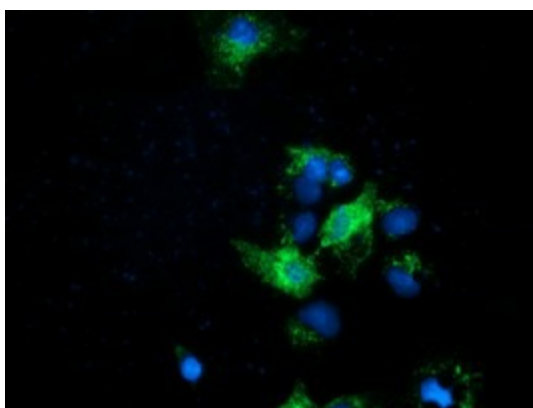
Axon guidance

Product images:


HEK293T cells were transfected with the pCMV6-ENTRY control (Left lane) or pCMV6-ENTRY EFNA2 ([RC213728], Right lane) cDNA for 48 hrs and lysed. Equivalent amounts of cell lysates (5 ug per lane) were separated by SDS-PAGE and immunoblotted with anti-EFNA2. Positive lysates [LY400546] (100ug) and [LC400546] (20ug) can be purchased separately from OriGene.



Western blot analysis of extracts (35ug) from 9 different cell lines by using anti-EFNA2 monoclonal antibody.



Anti-EFNA2 mouse monoclonal antibody ([TA501460]) immunofluorescent staining of COS7 cells transiently transfected by pCMV6-ENTRY EFNA2 ([RC213728]).