

Product datasheet for **TA501459AM**

IL36 alpha (IL36A) Mouse Monoclonal Antibody (Biotin conjugated) [Clone ID: OTI3A2]

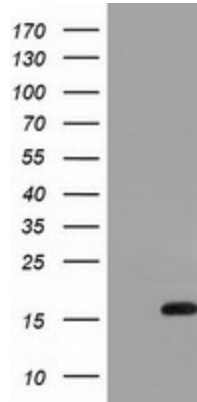
Product data:

Product Type:	Primary Antibodies
Clone Name:	OTI3A2
Applications:	FC, IF, WB
Recommended Dilution:	WB: 1:200 - 1:1000, IF 1:100, FLOW 1:100
Reactivity:	Human
Host:	Mouse
Isotype:	IgG1
Clonality:	Monoclonal
Immunogen:	Full length human recombinant protein of human IL1F6 (NP_055255) produced in HEK293T cell.
Formulation:	PBS (pH 7.3) containing 1% BSA, 50% glycerol and 0.02% sodium azide.
Concentration:	0.5 mg/ml
Purification:	Purified from mouse ascites fluids or tissue culture supernatant by affinity chromatography (protein A/G)
Conjugation:	Biotin
Storage:	Store at -20°C as received.
Stability:	Stable for 12 months from date of receipt.
Predicted Protein Size:	17.5 kDa
Gene Name:	interleukin 36 alpha
Database Link:	NP_055255 Entrez Gene 27179 Human Q9UHA7
Synonyms:	FIL1; FIL1(EPSILON); FIL1E; IL-1F6; IL1(EPSILON); IL1F6
Protein Families:	Druggable Genome, Secreted Protein

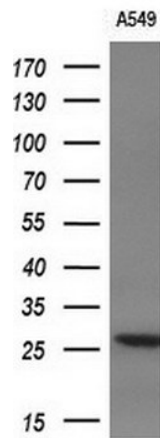


[View online »](#)

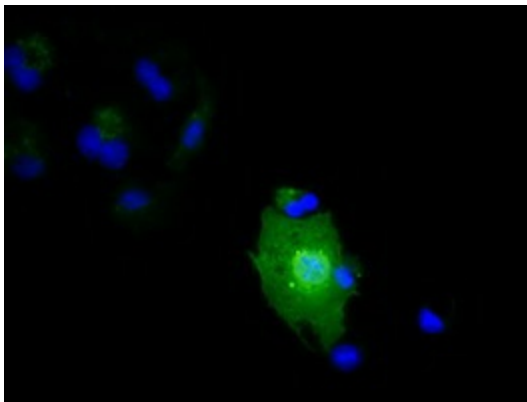
Product images:



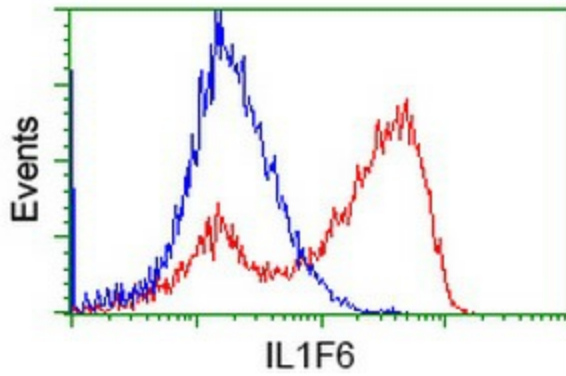
HEK293T cells were transfected with the pCMV6-ENTRY control (Cat# [PS100001], Left lane) or pCMV6-ENTRY IL1F6 (Cat# [RC219328], Right lane) cDNA for 48 hrs and lysed. Equivalent amounts of cell lysates (5 ug per lane) were separated by SDS-PAGE and immunoblotted with anti-IL1F6 (Cat# [TA501459]). Positive lysates [LY415288] (100ug) and [LC415288] (20ug) can be purchased separately from OriGene.



Western blot analysis of extracts (10ug) from 1 cell line by using anti-IL1F6 monoclonal antibody (1:200).



Western blot analysis of extracts (10ug) from A549 cell line by using anti-IL1F6 monoclonal antibody (1:200).



HEK293T cells transfected with either [RC219328] overexpress plasmid (Red) or empty vector control plasmid (Blue) were immunostained by anti-IL1F6 antibody ([TA501459]), and then analyzed by flow cytometry.