

## Product datasheet for **TA501450BM**

### Ephrin A2 (EFNA2) Mouse Monoclonal Antibody (HRP conjugated) [Clone ID: OTI3E1]

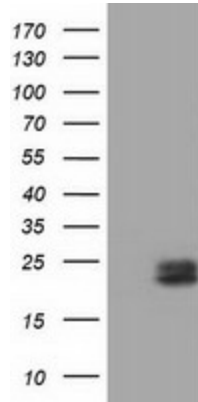
#### Product data:

Product Type:	Primary Antibodies
Clone Name:	OTI3E1
Applications:	IF, WB
Recommended Dilution:	WB 1:2000, IF 1:100
Reactivity:	Human, Mouse, Rat
Host:	Mouse
Isotype:	IgG2b
Clonality:	Monoclonal
Immunogen:	Full length human recombinant protein of human EFNA2 (NP_001396) produced in HEK293T cell.
Formulation:	PBS (pH 7.3) containing 1% BSA, 50% glycerol.
Concentration:	0.5 mg/ml
Purification:	Purified from mouse ascites fluids or tissue culture supernatant by affinity chromatography (protein A/G)
Conjugation:	HRP
Storage:	Store at -20°C as received.
Stability:	Stable for 12 months from date of receipt.
Predicted Protein Size:	21.3 kDa
Gene Name:	ephrin A2
Database Link:	<a href="#">NP_001396</a> <a href="#">Entrez Gene 13637 Mouse</a> <a href="#">Entrez Gene 1943 Human</a> <a href="#">O43921</a>
Synonyms:	ELF-1; EPLG6; HEK7-L; LERK-6; LERK6
Protein Families:	Druggable Genome
Protein Pathways:	Axon guidance

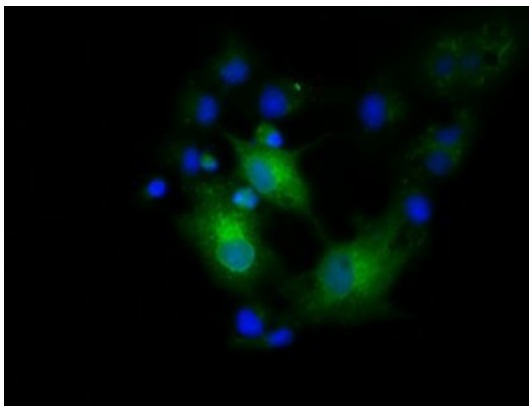


[View online »](#)

**Product images:**



HEK293T cells were transfected with the pCMV6-ENTRY control (Left lane) or pCMV6-ENTRY EFNA2 ([RC213728], Right lane) cDNA for 48 hrs and lysed. Equivalent amounts of cell lysates (5 ug per lane) were separated by SDS-PAGE and immunoblotted with anti-EFNA2. Positive lysates [LY400546] (100ug) and [LC400546] (20ug) can be purchased separately from OriGene.



Anti-EFNA2 mouse monoclonal antibody ([TA501450]) immunofluorescent staining of COS7 cells transiently transfected by pCMV6-ENTRY EFNA2 ([RC213728]).