

Product datasheet for **TA501443AM**

SHPRH Mouse Monoclonal Antibody (Biotin conjugated) [Clone ID: OTI3F8]

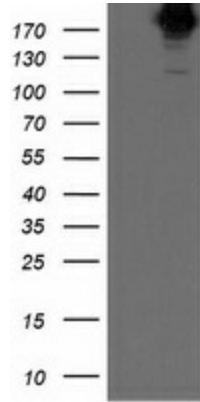
Product data:

Product Type:	Primary Antibodies
Clone Name:	OTI3F8
Applications:	WB
Recommended Dilution:	WB 1:2000
Reactivity:	Human, Mouse, Rat
Host:	Mouse
Isotype:	IgG2b
Clonality:	Monoclonal
Immunogen:	Human recombinant protein fragment corresponding to amino acids 1-100 and 1500
Formulation:	PBS (pH 7.3) containing 1% BSA, 50% glycerol and 0.02% sodium azide.
Concentration:	0.5 mg/ml
Purification:	Purified from mouse ascites fluids or tissue culture supernatant by affinity chromatography (protein A/G)
Conjugation:	Biotin
Storage:	Store at -20°C as received.
Stability:	Stable for 12 months from date of receipt.
Predicted Protein Size:	192.9 kDa
Gene Name:	SNF2 histone linker PHD RING helicase
Database Link:	NP_001036148 Entrez Gene 257218 Human Q149N8
Background:	SHPRH is a ubiquitously expressed protein that contains motifs characteristics of several DNA repair proteins, transcription factors, and helicases. SHPRH is a functional homolog of <i>S. cerevisiae</i> RAD5 (Unk et al., 2006 [PubMed 17108083]). [supplied by OMIM]
Synonyms:	bA545I5.2
Protein Families:	Druggable Genome



[View online »](#)

Product images:



HEK293T cells were transfected with the pCMV6-ENTRY control (Cat# [PS100001], Left lane) or pCMV6-ENTRY SHPRH (Cat# [RC212767], Right lane) cDNA for 48 hrs and lysed. Equivalent amounts of cell lysates (5 ug per lane) were separated by SDS-PAGE and immunoblotted with anti-SHPRH(Cat# [TA501443]).

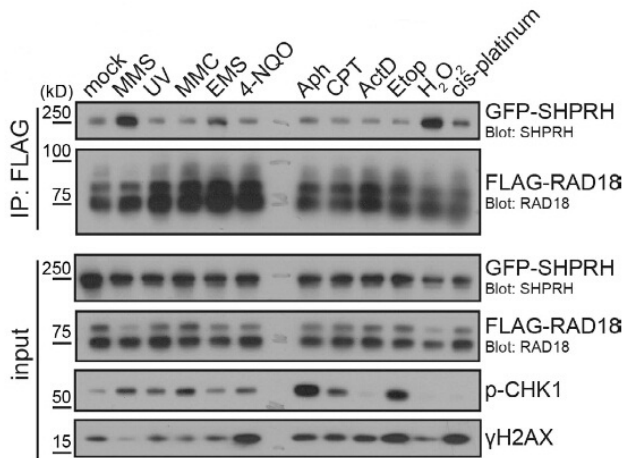


Figure from citation: Western Blot of SHPRH protein level by using anti-SHPRH antibody. [View Citation](#)