

Product datasheet for **TA501440BM**

L1CAM Mouse Monoclonal Antibody (HRP conjugated) [Clone ID: OTI1D12]

Product data:

Product Type:	Primary Antibodies
Clone Name:	OTI1D12
Applications:	FC, IF, WB
Recommended Dilution:	WB 1:500, IF 1:100, FLOW 1:100
Reactivity:	Human, Mouse, Rat
Host:	Mouse
Isotype:	IgG1
Clonality:	Monoclonal
Immunogen:	Full length human recombinant protein of human L1CAM (NP_000416) produced in HEK293T cell.
Formulation:	PBS (pH 7.3) containing 1% BSA, 50% glycerol.
Concentration:	0.5 mg/ml
Purification:	Purified from mouse ascites fluids or tissue culture supernatant by affinity chromatography (protein A/G)
Conjugation:	HRP
Storage:	Store at -20°C as received.
Stability:	Stable for 12 months from date of receipt.
Predicted Protein Size:	137.8 kDa
Gene Name:	L1 cell adhesion molecule
Database Link:	NP_000416 Entrez Gene 16728 Mouse Entrez Gene 50687 Rat Entrez Gene 3897 Human P32004



[View online »](#)

Background:

The protein encoded by this gene is an axonal glycoprotein belonging to the immunoglobulin supergene family. The ectodomain, consisting of several immunoglobulin-like domains and fibronectin-like repeats (type III), is linked via a single transmembrane sequence to a conserved cytoplasmic domain. This cell adhesion molecule plays an important role in nervous system development, including neuronal migration and differentiation. Mutations in the gene cause three X-linked neurological syndromes known by the acronym CRASH (corpus callosum hypoplasia, retardation, aphasia, spastic paraplegia and hydrocephalus). Alternative splicing of a neuron-specific exon is thought to be functionally relevant. [provided by RefSeq]

Synonyms:

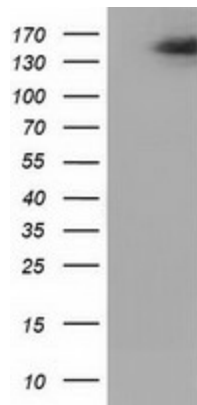
CAML1; CD171; HSAS; HSAS1; MASA; MIC5; N-CAM-L1; N-CAML1; NCAM-L1; S10; SPG1

Protein Families:

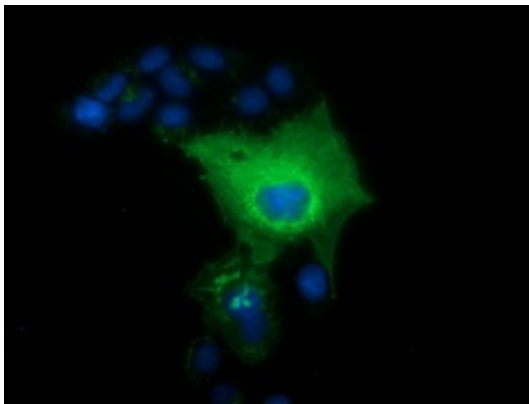
Druggable Genome, ES Cell Differentiation/IPS, Transmembrane

Protein Pathways:

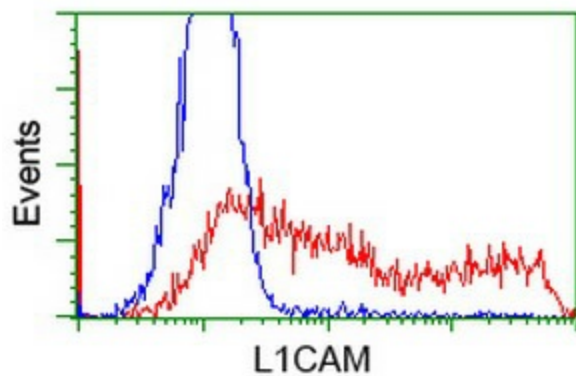
Axon guidance, Cell adhesion molecules (CAMs)

Product images:


HEK293T cells were transfected with the pCMV6-ENTRY control (Left lane) or pCMV6-ENTRY L1CAM ([RC211601], Right lane) cDNA for 48 hrs and lysed. Equivalent amounts of cell lysates (5 ug per lane) were separated by SDS-PAGE and immunoblotted with anti-L1CAM. Positive lysates [LY400150] (100ug) and [LC400150] (20ug) can be purchased separately from OriGene.



Anti-L1CAM mouse monoclonal antibody ([TA501440]) immunofluorescent staining of COS7 cells transiently transfected by pCMV6-ENTRY L1CAM ([RC211601]).



HEK293T cells transfected with either [RC211601] overexpress plasmid (Red) or empty vector control plasmid (Blue) were immunostained by anti-L1CAM antibody ([TA501440]), and then analyzed by flow cytometry.