

Product datasheet for **TA501437S**

L1CAM Mouse Monoclonal Antibody [Clone ID: OTI1A8]

Product data:

Product Type:	Primary Antibodies
Clone Name:	OTI1A8
Applications:	FC, IF, WB
Recommended Dilution:	WB 1:2000, IF 1:100, FLOW 1:100
Reactivity:	Human, Mouse, Rat
Host:	Mouse
Isotype:	IgG2a
Clonality:	Monoclonal
Immunogen:	Full length human recombinant protein of human L1CAM (NP_000416) produced in HEK293T cell.
Formulation:	PBS (pH 7.3) containing 1% BSA, 50% glycerol and 0.02% sodium azide.
Concentration:	1 mg/ml
Purification:	Purified from mouse ascites fluids or tissue culture supernatant by affinity chromatography (protein A/G)
Conjugation:	Unconjugated
Storage:	Store at -20°C as received.
Stability:	Stable for 12 months from date of receipt.
Predicted Protein Size:	137.8 kDa
Gene Name:	L1 cell adhesion molecule
Database Link:	NP_000416 Entrez Gene 16728 Mouse Entrez Gene 50687 Rat Entrez Gene 3897 Human P32004



[View online »](#)

Background:

The protein encoded by this gene is an axonal glycoprotein belonging to the immunoglobulin supergene family. The ectodomain, consisting of several immunoglobulin-like domains and fibronectin-like repeats (type III), is linked via a single transmembrane sequence to a conserved cytoplasmic domain. This cell adhesion molecule plays an important role in nervous system development, including neuronal migration and differentiation. Mutations in the gene cause three X-linked neurological syndromes known by the acronym CRASH (corpus callosum hypoplasia, retardation, aphasia, spastic paraplegia and hydrocephalus). Alternative splicing of a neuron-specific exon is thought to be functionally relevant. [provided by RefSeq]

Synonyms:

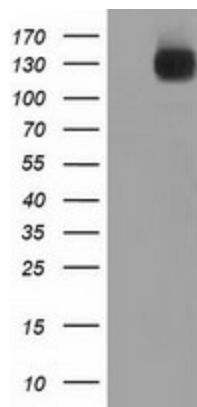
CAML1; CD171; HSAS; HSAS1; MASA; MIC5; N-CAM-L1; N-CAML1; NCAM-L1; S10; SPG1

Protein Families:

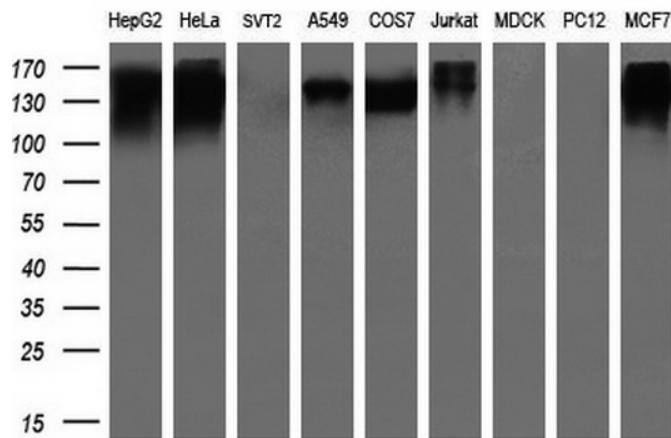
Druggable Genome, ES Cell Differentiation/IPS, Transmembrane

Protein Pathways:

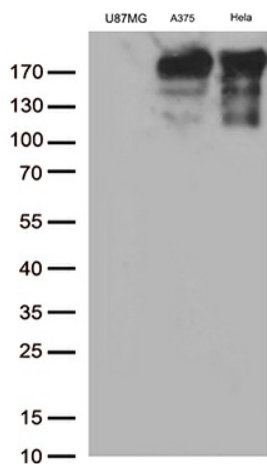
Axon guidance, Cell adhesion molecules (CAMs)

Product images:


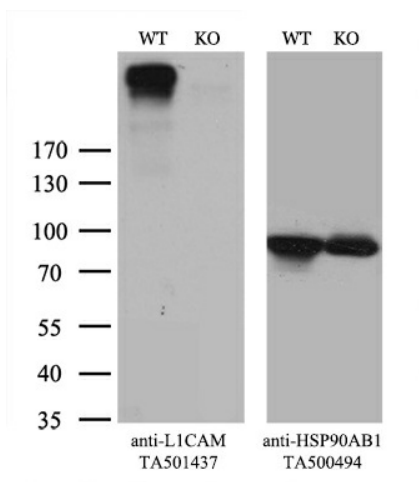
HEK293T cells were transfected with the pCMV6-ENTRY control (Left lane) or pCMV6-ENTRY L1CAM ([RC211601], Right lane) cDNA for 48 hrs and lysed. Equivalent amounts of cell lysates (5 ug per lane) were separated by SDS-PAGE and immunoblotted with anti-L1CAM. Positive lysates [LY400150] (100ug) and [LC400150] (20ug) can be purchased separately from OriGene.



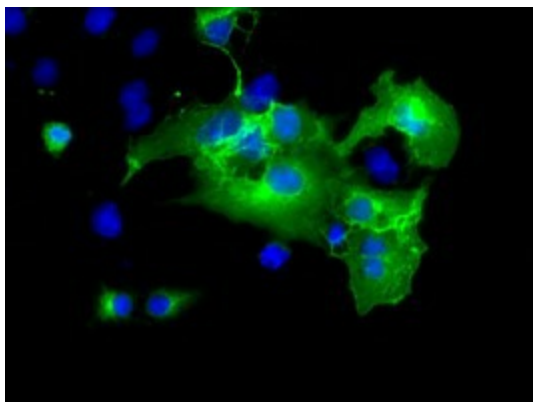
Western blot analysis of extracts (35ug) from 9 different cell lines by using anti-L1CAM monoclonal antibody (HepG2: human; HeLa: human; SVT2: mouse; A549: human; COS7: monkey; Jurkat: human; MDCK: canine; PC12: rat; MCF7: human) (1:200).



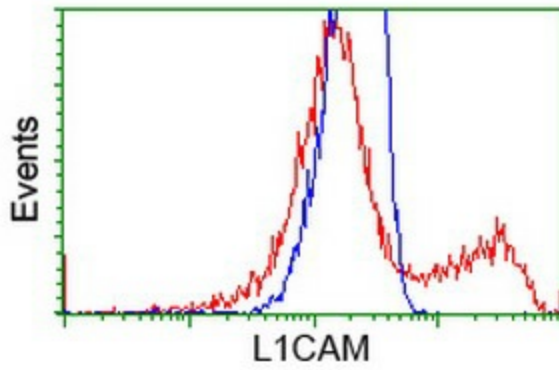
Western blot analysis of extracts (35ug) from 3 cell line lysates by using anti-L1CAM monoclonal antibody (1:500).



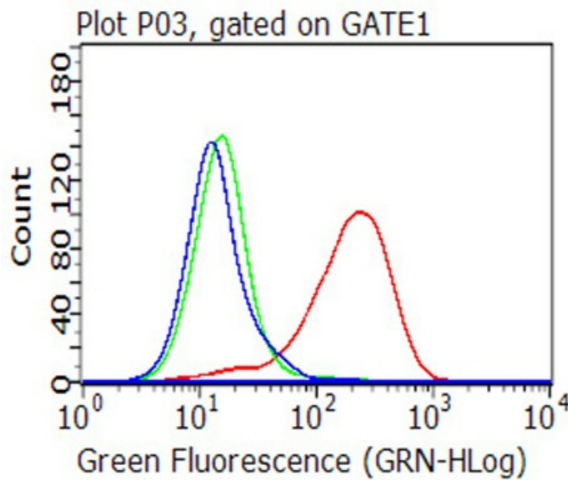
Equivalent amounts of cell lysates (10 ug per lane) of wild-type HeLa cells (WT, Cat# LC810HELA) and L1CAM-Knockout HeLa cells (KO, Cat# [LC832196]) were separated by SDS-PAGE and immunoblotted with anti-L1CAM monoclonal antibody [TA501437] (1:500^o). Then the blotted membrane was stripped and reprobed with anti-HSP90 antibody as a loading control.



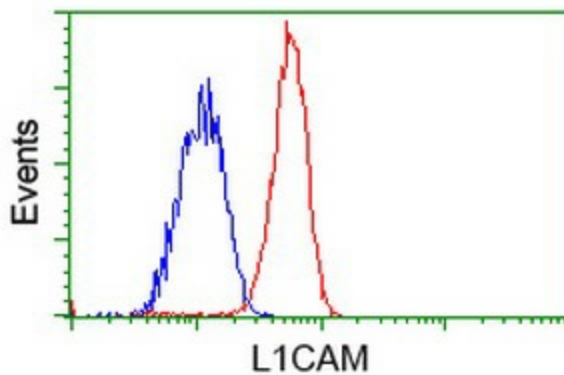
Anti-L1CAM mouse monoclonal antibody ([TA501437]) immunofluorescent staining of COS7 cells transiently transfected by pCMV6-ENTRY L1CAM ([RC211601]).



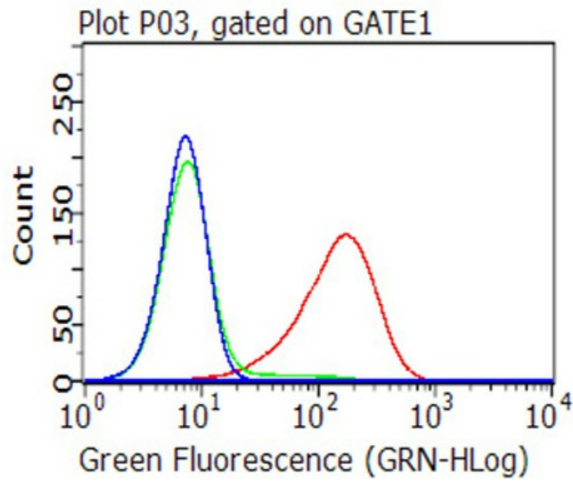
HEK293T cells transfected with either [RC211601] overexpress plasmid (Red) or empty vector control plasmid (Blue) were immunostained by anti-L1CAM antibody ([TA501437]), and then analyzed by flow cytometry.



Flow cytometric analysis of living Hela cells, using anti-L1CAM antibody ([TA501437], Red), compared to an isotype control (green), and a PBS control (blue) (1:100).



Flow cytometric Analysis of Jurkat cells, using anti-L1CAM antibody ([TA501437]), (Red), compared to a nonspecific negative control antibody (TA50011), (Blue).



Flow cytometric analysis of living A375 cells, using anti-L1CAM antibody ([TA501437], Red), compared to an isotype control (green), and a PBS control (blue) (1:100).