

Product datasheet for **TA501433**

mu Crystallin (CRYM) Mouse Monoclonal Antibody [Clone ID: OTI1B5]

Product data:

Product Type:	Primary Antibodies
Clone Name:	OTI1B5
Applications:	IF, IHC, WB
Recommended Dilution:	WB: 1:200 - 1:1000, IHC 1:300, IF 1:100
Reactivity:	Human, Mouse, Rat
Host:	Mouse
Isotype:	IgG2a
Clonality:	Monoclonal
Immunogen:	Full length human recombinant protein of human CRYM (NP_001879) produced in HEK293T cell.
Formulation:	PBS (pH 7.3) containing 1% BSA, 50% glycerol and 0.02% sodium azide.
Concentration:	0.58 mg/ml
Purification:	Purified from mouse ascites fluids or tissue culture supernatant by affinity chromatography (protein A/G)
Conjugation:	Unconjugated
Storage:	Store at -20°C as received.
Stability:	Stable for 12 months from date of receipt.
Predicted Protein Size:	33.6 kDa
Gene Name:	crystallin mu
Database Link:	NP_001879 Entrez Gene 12971 Mouse Entrez Gene 117024 Rat Entrez Gene 1428 Human Q14894



[View online »](#)

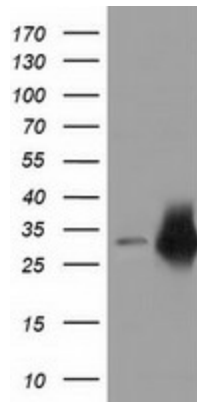
Background:

Crystallins are separated into two classes: taxon-specific and ubiquitous. The former class is also called phylogenetically-restricted crystallins. The latter class constitutes the major proteins of vertebrate eye lens and maintains the transparency and refractive index of the lens. This gene encodes a taxon-specific crystallin protein that binds NADPH and has sequence similarity to bacterial ornithine cyclodeaminases. The encoded protein does not perform a structural role in lens tissue, and instead it binds thyroid hormone for possible regulatory or developmental roles. Mutations in this gene have been associated with autosomal dominant non-syndromic deafness. Multiple alternatively spliced transcript variants have been found for this gene. [provided by RefSeq]

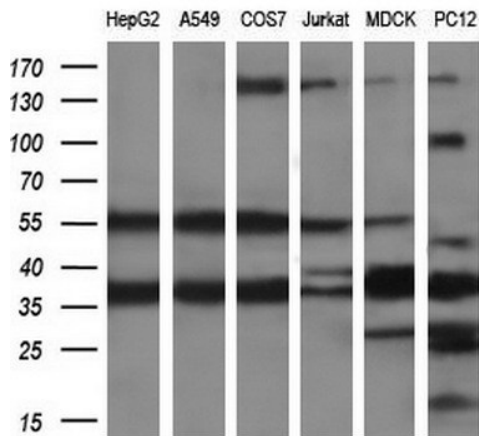
Synonyms:

DFNA40; THBP

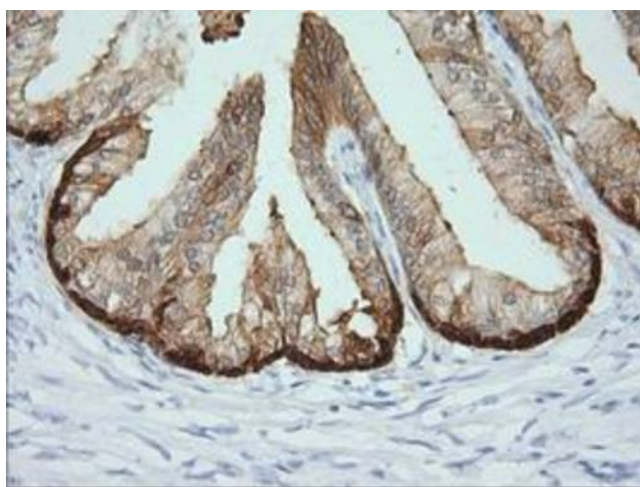
Product images:



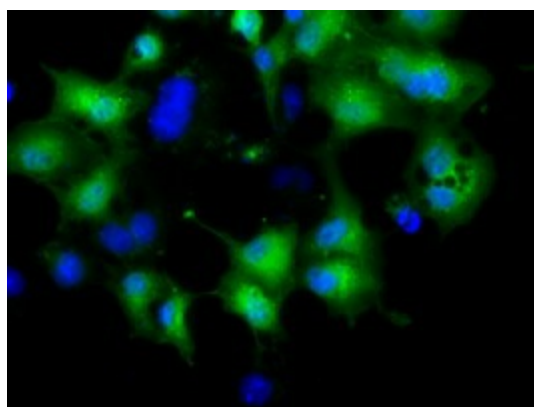
HEK293T cells were transfected with the pCMV6-ENTRY control (Left lane) or pCMV6-ENTRY CRYM ([RC218123], Right lane) cDNA for 48 hrs and lysed. Equivalent amounts of cell lysates (5 ug per lane) were separated by SDS-PAGE and immunoblotted with anti-CRYM. Positive lysates [LY419685] (100ug) and [LC419685] (20ug) can be purchased separately from OriGene.



Western blot analysis of extracts (10ug) from 6 different cell lines by using anti-CRYM monoclonal antibody (1:200).



Immunohistochemical staining of paraffin-embedded Human prostate tissue within the normal limits using anti-CRYM mouse monoclonal antibody. Heat-induced epitope retrieval by EDTA solution buffer pH 8.0 at 120°C for 3 min.



Anti-CRYM mouse monoclonal antibody (TA501433) immunofluorescent staining of COS7 cells transiently transfected by pCMV6-ENTRY CRYM ([RC218123]).