

Product datasheet for **TA501431M**

COX6A1 Mouse Monoclonal Antibody [Clone ID: OTI4G2]

Product data:

Product Type:	Primary Antibodies
Clone Name:	OTI4G2
Applications:	FC, IF, WB
Recommended Dilution:	WB 1:500, IF 1:100, FLOW 1:100
Reactivity:	Human
Host:	Mouse
Isotype:	IgG1
Clonality:	Monoclonal
Immunogen:	Full length human recombinant protein of human COX6A1 (NP_004364) produced in HEK293T cell.
Formulation:	PBS (pH 7.3) containing 1% BSA, 50% glycerol and 0.02% sodium azide.
Concentration:	0.52 mg/ml
Purification:	Purified from mouse ascites fluids or tissue culture supernatant by affinity chromatography (protein A/G)
Conjugation:	Unconjugated
Storage:	Store at -20°C as received.
Stability:	Stable for 12 months from date of receipt.
Predicted Protein Size:	9.6 kDa
Gene Name:	cytochrome c oxidase subunit 6A1
Database Link:	NP_004364 Entrez Gene 1337 Human P12074

[View online »](#)

Background:

Cytochrome c oxidase (COX), the terminal enzyme of the mitochondrial respiratory chain, catalyzes the electron transfer from reduced cytochrome c to oxygen. It is a heteromeric complex consisting of 3 catalytic subunits encoded by mitochondrial genes and multiple structural subunits encoded by nuclear genes. The mitochondrially-encoded subunits function in the electron transfer and the nuclear-encoded subunits may function in the regulation and assembly of the complex. This nuclear gene encodes polypeptide 1 (liver isoform) of subunit VIa, and polypeptide 1 is found in all non-muscle tissues. Polypeptide 2 (heart/muscle isoform) of subunit VIa is encoded by a different gene, and is present only in striated muscles. These two polypeptides share 66% amino acid sequence identity. It has been reported that there may be several pseudogenes on chromosomes 1, 6, 7q21, 7q31-32 and 12. However, only one pseudogene (COX6A1P) on chromosome 1p31.1 has been documented. [provided by RefSeq]

Synonyms:

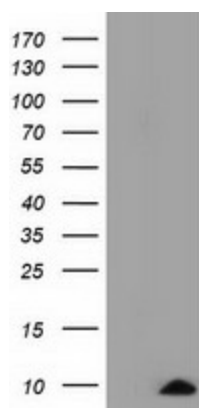
CMTRID; COX6A; COX6AL

Protein Families:

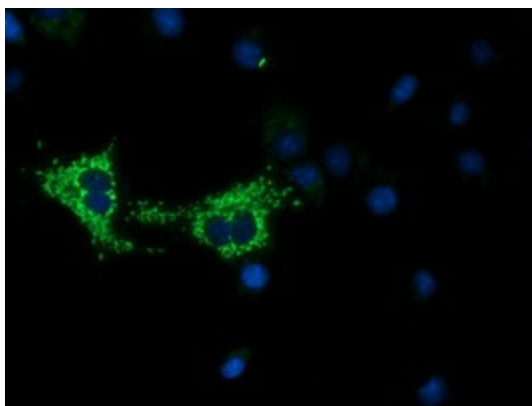
Transmembrane

Protein Pathways:

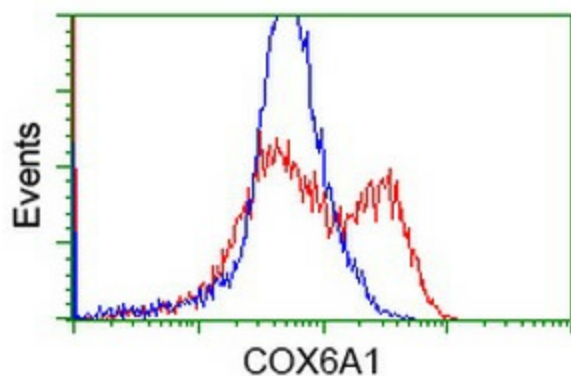
Alzheimer's disease, Cardiac muscle contraction, Huntington's disease, Metabolic pathways, Oxidative phosphorylation, Parkinson's disease

Product images:


HEK293T cells were transfected with the pCMV6-ENTRY control (Cat# [PS100001], Left lane) or pCMV6-ENTRY COX6A1 (Cat# [RC210485], Right lane) cDNA for 48 hrs and lysed. Equivalent amounts of cell lysates (5 ug per lane) were separated by SDS-PAGE and immunoblotted with anti-COX6A1 (Cat# [TA501431]). Positive lysates [LY401392] (100ug) and [LC401392] (20ug) can be purchased separately from OriGene.



Anti-COX6A1 mouse monoclonal antibody ([TA501431]) immunofluorescent staining of COS7 cells transiently transfected by pCMV6-ENTRY COX6A1 ([RC210485]).



HEK293T cells transfected with either [RC210485] overexpress plasmid (Red) or empty vector control plasmid (Blue) were immunostained by anti-COX6A1 antibody ([TA501431]), and then analyzed by flow cytometry.