

Product datasheet for **TA501429M**

Coronin 1a (CORO1A) Mouse Monoclonal Antibody [Clone ID: OTI1A5]

Product data:

Product Type:	Primary Antibodies
Clone Name:	OTI1A5
Applications:	FC, IF, WB
Recommended Dilution:	WB 1:500~2000, IF 1:100, FLOW 1:100
Reactivity:	Human, Mouse, Rat
Host:	Mouse
Isotype:	IgG1
Clonality:	Monoclonal
Immunogen:	Full length human recombinant protein of human CORO1A(NP_009005) produced in HEK293T cell.
Formulation:	PBS (pH 7.3) containing 1% BSA, 50% glycerol and 0.02% sodium azide.
Concentration:	1 mg/ml
Purification:	Purified from mouse ascites fluids or tissue culture supernatant by affinity chromatography (protein A/G)
Conjugation:	Unconjugated
Storage:	Store at -20°C as received.
Stability:	Stable for 12 months from date of receipt.
Predicted Protein Size:	50.8 kDa
Gene Name:	coronin 1A
Database Link:	NP_009005 Entrez Gene 12721 Mouse Entrez Gene 155151 Rat Entrez Gene 11151 Human P31146



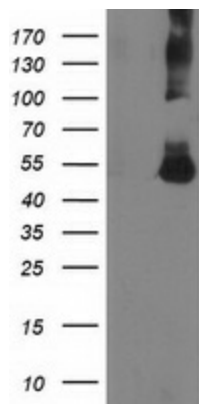
[View online »](#)

Background:

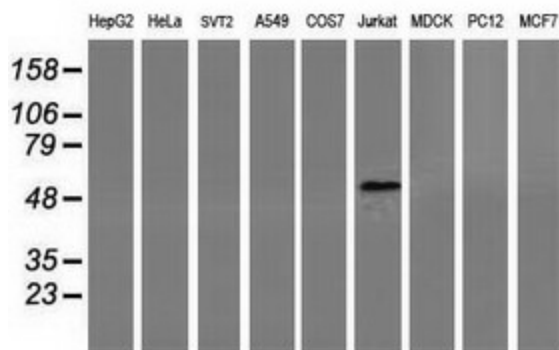
This gene encodes a member of the WD repeat protein family. WD repeats are minimally conserved regions of approximately 40 amino acids typically bracketed by gly-his and trp-aspartate (GH-WD), which may facilitate formation of heterotrimeric or multiprotein complexes. Members of this family are involved in a variety of cellular processes, including cell cycle progression, signal transduction, apoptosis, and gene regulation. Alternative splicing results in multiple transcript variants. A related pseudogene has been defined on chromosome 16. [provided by RefSeq]

Synonyms:

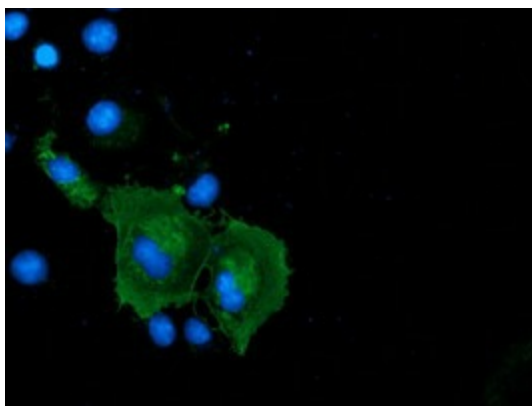
CLABP; CLIPINA; HCORO1; IMD8; p57; TACO

Product images:


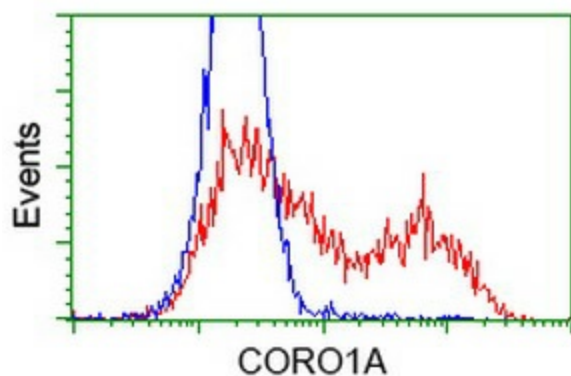
HEK293T cells were transfected with the pCMV6-ENTRY control (Cat# [PS100001], Left lane) or pCMV6-ENTRY CORO1A (Cat# [RC210753], Right lane) cDNA for 48 hrs and lysed. Equivalent amounts of cell lysates (5 ug per lane) were separated by SDS-PAGE and immunoblotted with anti-CORO1A (Cat# [TA501429]). Positive lysates [LY402085] (100ug) and [LC402085] (20ug) can be purchased separately from OriGene.



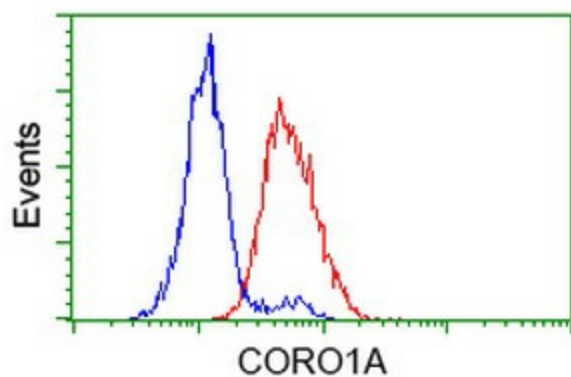
Western blot analysis of extracts (35ug) from 9 different cell lines by using anti-CORO1A monoclonal antibody.



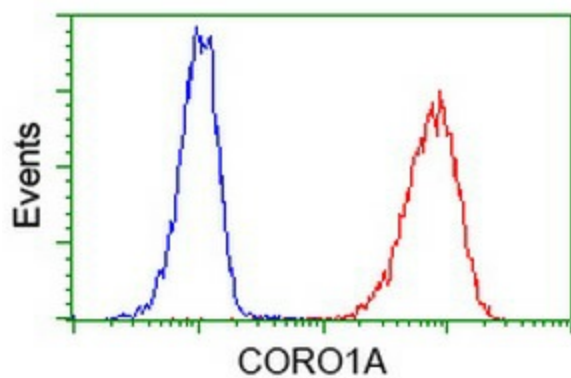
Anti-CORO1A mouse monoclonal antibody ([TA501429]) immunofluorescent staining of COS7 cells transiently transfected by pCMV6-ENTRY CORO1A ([RC210753]).



HEK293T cells transfected with either [RC210753] overexpress plasmid (Red) or empty vector control plasmid (Blue) were immunostained by anti-CORO1A antibody ([TA501429]), and then analyzed by flow cytometry.



Flow cytometric Analysis of Hela cells, using anti-CORO1A antibody ([TA501429]), (Red), compared to a nonspecific negative control antibody (TA50011), (Blue).



Flow cytometric Analysis of Jurkat cells, using anti-CORO1A antibody ([TA501429]), (Red), compared to a nonspecific negative control antibody (TA50011), (Blue).