

Product datasheet for **TA501412BM**

Pyruvate Kinase (PKLR) Mouse Monoclonal Antibody (HRP conjugated) [Clone ID: OTI1F3]

Product data:

Product Type:	Primary Antibodies
Clone Name:	OTI1F3
Applications:	FC, IF, WB
Recommended Dilution:	WB 1:2000, IF 1:100, FLOW 1:100
Reactivity:	Human, Mouse, Rat
Host:	Mouse
Isotype:	IgG2a
Clonality:	Monoclonal
Immunogen:	Full length human recombinant protein of human PKLR (NP_000289) produced in HEK293T cell.
Formulation:	PBS (pH 7.3) containing 1% BSA, 50% glycerol.
Concentration:	0.5 mg/ml
Purification:	Purified from mouse ascites fluids or tissue culture supernatant by affinity chromatography (protein A/G)
Conjugation:	HRP
Storage:	Store at -20°C as received.
Stability:	Stable for 12 months from date of receipt.
Predicted Protein Size:	61.6 kDa
Gene Name:	pyruvate kinase L/R
Database Link:	NP_000289 Entrez Gene 18770 Mouse Entrez Gene 24651 Rat Entrez Gene 5313 Human P30613
Background:	The protein encoded by this gene is a pyruvate kinase that catalyzes the transphosphorylation of phosphoenolpyruvate into pyruvate and ATP, which is the rate-limiting step of glycolysis. Defects in this enzyme, due to gene mutations or genetic variations, are the common cause of chronic hereditary nonspherocytic hemolytic anemia (CNSHA or HNSHA). Multiple transcript variants encoding different isoforms have been found for this gene. [provided by RefSeq]



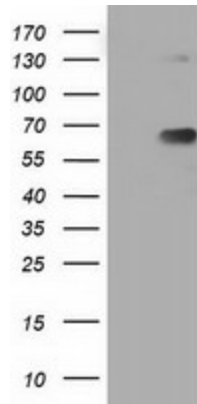
[View online »](#)

Synonyms: PK1; PKL; PKR; PKRL; RPK

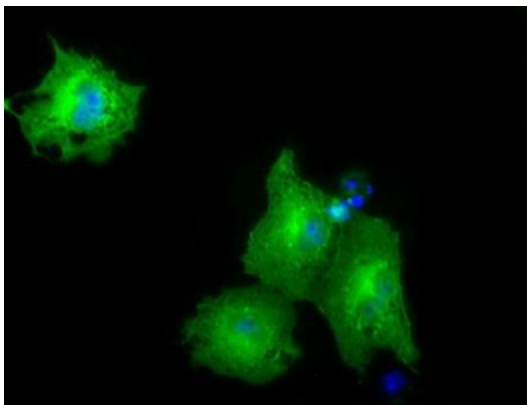
Protein Families: Druggable Genome

Protein Pathways: Glycolysis / Gluconeogenesis, Insulin signaling pathway, Maturity onset diabetes of the young, Metabolic pathways, Purine metabolism, Pyruvate metabolism, Type II diabetes mellitus

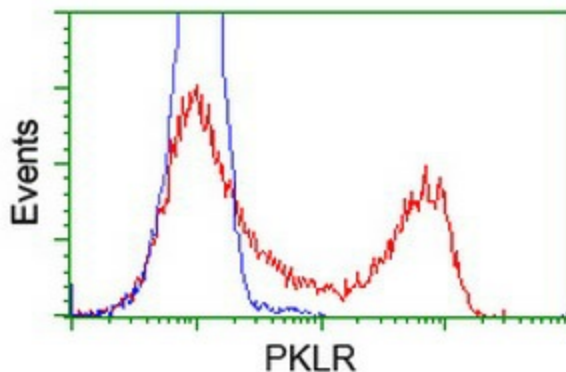
Product images:



HEK293T cells were transfected with the pCMV6-ENTRY control (Left lane) or pCMV6-ENTRY PKLR ([RC206455], Right lane) cDNA for 48 hrs and lysed. Equivalent amounts of cell lysates (5 ug per lane) were separated by SDS-PAGE and immunoblotted with anti-PKLR. Positive lysates [LY400113] (100ug) and [LC400113] (20ug) can be purchased separately from OriGene.



Anti-PKLR mouse monoclonal antibody ([TA501412]) immunofluorescent staining of COS7 cells transiently transfected by pCMV6-ENTRY PKLR ([RC206455]).



HEK293T cells transfected with either [RC206455] overexpress plasmid (Red) or empty vector control plasmid (Blue) were immunostained by anti-PKLR antibody ([TA501412]), and then analyzed by flow cytometry.