

Product datasheet for **TA501400**

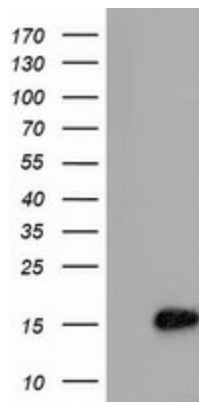
C15orf40 Mouse Monoclonal Antibody [Clone ID: OTI2B7]

Product data:

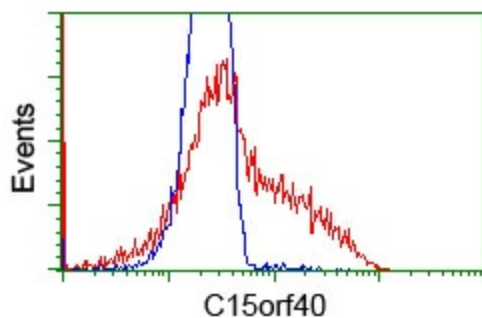
Product Type:	Primary Antibodies
Clone Name:	OTI2B7
Applications:	FC, WB
Recommended Dilution:	WB 1:500, Flow 1:100
Reactivity:	Human, Mouse, Rat
Host:	Mouse
Isotype:	IgG1
Clonality:	Monoclonal
Immunogen:	Full length human recombinant protein of human C15orf40 (NP_653198) produced in HEK293T cell.
Formulation:	PBS (pH 7.3) containing 1% BSA, 50% glycerol and 0.02% sodium azide.
Concentration:	0.67 mg/ml
Purification:	Purified from mouse ascites fluids or tissue culture supernatant by affinity chromatography (protein A/G)
Conjugation:	Unconjugated
Storage:	Store at -20°C as received.
Stability:	Stable for 12 months from date of receipt.
Predicted Protein Size:	16.2 kDa
Gene Name:	chromosome 15 open reading frame 40
Database Link:	NP_653198 Entrez Gene 123207 Human Q8WUR7
Synonyms:	FLJ33606; MGC29937



[View online »](#)

Product images:

HEK293T cells were transfected with the pCMV6-ENTRY control (Cat# [PS100001], Left lane) or pCMV6-ENTRY C15orf40 (Cat# [RC205773], Right lane) cDNA for 48 hrs and lysed. Equivalent amounts of cell lysates (5 ug per lane) were separated by SDS-PAGE and immunoblotted with anti-C15orf40 (Cat# TA501400). Positive lysates [LY408238] (100ug) and [LC408238] (20ug) can be purchased separately from OriGene.



HEK293T cells transfected with either [RC205773] overexpress plasmid (Red) or empty vector control plasmid (Blue) were immunostained by anti-C15orf40 antibody (TA501400), and then analyzed by flow cytometry.