

Product datasheet for **TA501393M**

DHPS Mouse Monoclonal Antibody [Clone ID: OTI2C9]

Product data:

Product Type:	Primary Antibodies
Clone Name:	OTI2C9
Applications:	WB
Recommended Dilution:	WB 1:2000
Reactivity:	Human, Mouse, Rat
Host:	Mouse
Isotype:	IgG2a
Clonality:	Monoclonal
Immunogen:	Full length human recombinant protein of human DHPS (NP_001921) produced in HEK293T cell.
Formulation:	PBS (pH 7.3) containing 1% BSA, 50% glycerol and 0.02% sodium azide.
Concentration:	0.85 mg/ml
Purification:	Purified from mouse ascites fluids or tissue culture supernatant by affinity chromatography (protein A/G)
Conjugation:	Unconjugated
Storage:	Store at -20°C as received.
Stability:	Stable for 12 months from date of receipt.
Predicted Protein Size:	40.8 kDa
Gene Name:	deoxyhypusine synthase
Database Link:	NP_001921 Entrez Gene 288923 Rat Entrez Gene 330817 Mouse Entrez Gene 1725 Human P49366

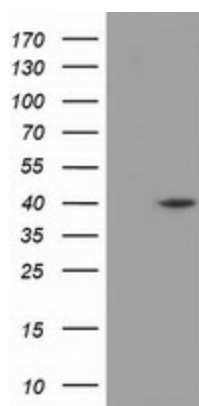
[View online »](#)

Background:

The unusual amino acid hypusine is formed posttranslationally and is only found in a single cellular protein, eukaryotic translation initiation factor 5A. In the first step of hypusine biosynthesis, deoxyhypusine synthase catalyzes the NAD-dependent transfer of the butylamine moiety of spermidine to the epsilon-amino group of a specific lysine residue of the EIF5A precursor protein to form the intermediate deoxyhypusine residue. This gene consists of nine exons spanning 6.6 kb. Three transcript variants have been isolated. However, only transcript variant 1 encodes an active protein. The shorter variants may act as modulating factors of DHPS activity. [provided by RefSeq]

Synonyms:

DHS; DS; MIG13

Product images:


HEK293T cells were transfected with the pCMV6-ENTRY control (Cat# [PS100001], Left lane) or pCMV6-ENTRY DHPS (Cat# [RC204235], Right lane) cDNA for 48 hrs and lysed. Equivalent amounts of cell lysates (5 ug per lane) were separated by SDS-PAGE and immunoblotted with anti-DHPS (Cat# [TA501393]). Positive lysates [LY400714] (100ug) and [LC400714] (20ug) can be purchased separately from OriGene.