

Product datasheet for **TA501391AM**

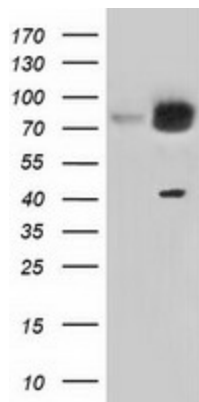
KBTBD7 Mouse Monoclonal Antibody (Biotin conjugated) [Clone ID: OTI1G3]

Product data:

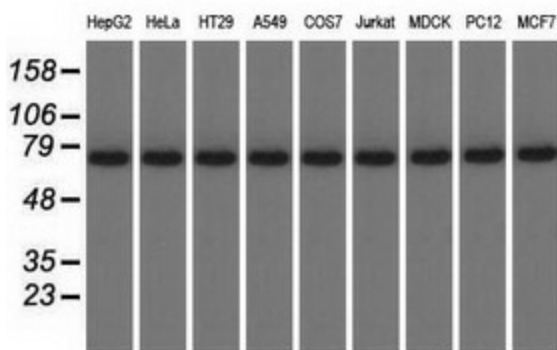
Product Type:	Primary Antibodies
Clone Name:	OTI1G3
Applications:	IF, WB
Recommended Dilution:	WB 1:2000, IF 1:100
Reactivity:	Human, Dog, Rat, Monkey, Mouse
Host:	Mouse
Isotype:	IgG2b
Clonality:	Monoclonal
Immunogen:	Full length human recombinant protein of human KBTBD7 (NP_115514) produced in HEK293T cell.
Formulation:	PBS (pH 7.3) containing 1% BSA, 50% glycerol and 0.02% sodium azide.
Concentration:	0.5 mg/ml
Purification:	Purified from mouse ascites fluids or tissue culture supernatant by affinity chromatography (protein A/G)
Conjugation:	Biotin
Storage:	Store at -20°C as received.
Stability:	Stable for 12 months from date of receipt.
Predicted Protein Size:	77.0 kDa
Gene Name:	kelch repeat and BTB domain containing 7
Database Link:	NP_115514 Entrez Gene 100909827 Rat Entrez Gene 485467 Dog Entrez Gene 698337 Monkey Entrez Gene 84078 Human Q8WVZ9
Synonyms:	DKFZp434E2318



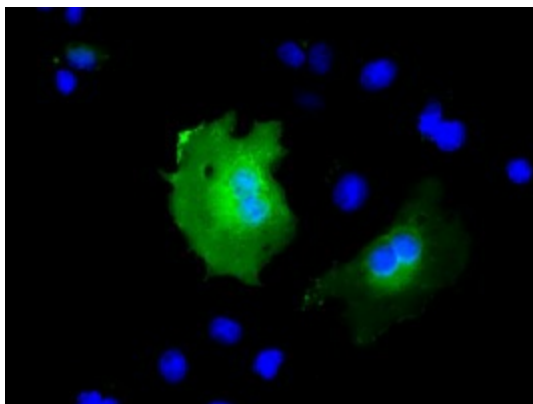
[View online »](#)

Product images:


HEK293T cells were transfected with the pCMV6-ENTRY control (Cat# [PS100001], Left lane) or pCMV6-ENTRY KBTBD7 (Cat# [RC205559], Right lane) cDNA for 48 hrs and lysed. Equivalent amounts of cell lysates (5 ug per lane) were separated by SDS-PAGE and immunoblotted with anti-KBTBD7 (Cat# [TA501391]). Positive lysates [LY410331] (100ug) and [LC410331] (20ug) can be purchased separately from OriGene.



Western blot analysis of extracts (35ug) from 9 different cell lines by using anti-KBTBD7 monoclonal antibody.



Anti-KBTBD7 mouse monoclonal antibody ([TA501391]) immunofluorescent staining of COS7 cells transiently transfected by pCMV6-ENTRY KBTBD7 ([RC205559]).