

Product datasheet for **TA501388BM**

MOB4A (MOB1B) Mouse Monoclonal Antibody (HRP conjugated) [Clone ID: OTI1H2]

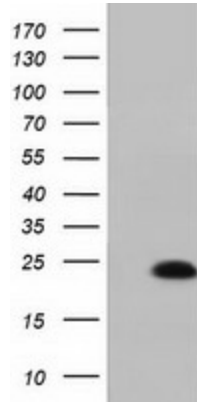
Product data:

Product Type:	Primary Antibodies
Clone Name:	OTI1H2
Applications:	FC, IHC, WB
Recommended Dilution:	WB 1:500, FLOW 1:100, IHC 1:150
Reactivity:	Human, Mouse, Rat
Host:	Mouse
Isotype:	IgG2a
Clonality:	Monoclonal
Immunogen:	Full length human recombinant protein of human MOBKL1A(NP_775739) produced in HEK293T cell.
Formulation:	PBS (pH 7.3) containing 1% BSA, 50% glycerol.
Concentration:	0.5 mg/ml
Purification:	Purified from mouse ascites fluids or tissue culture supernatant by affinity chromatography (protein A/G)
Conjugation:	HRP
Storage:	Store at -20°C as received.
Stability:	Stable for 12 months from date of receipt.
Predicted Protein Size:	24.9 kDa
Gene Name:	MOB kinase activator 1B
Database Link:	NP_775739 Entrez Gene 68473 Mouse Entrez Gene 360920 Rat Entrez Gene 92597 Human Q7L9L4
Background:	The protein encoded by this gene is similar to the yeast Mob1 protein. Yeast Mob1 binds Mps1p, a protein kinase essential for spindle pole body duplication and mitotic checkpoint regulation. [provided by RefSeq]. COMPLETENESS: complete on the 3' end.
Synonyms:	MATS2; MOB4A; MOBKL1A

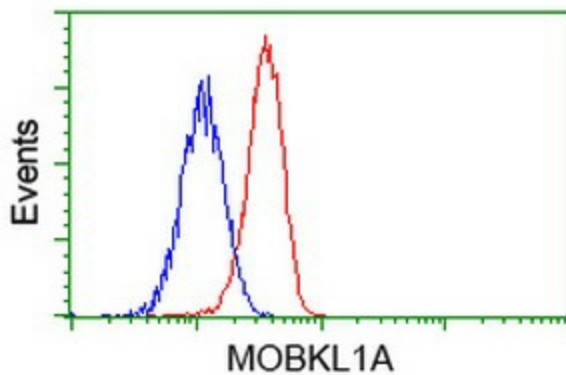


[View online »](#)

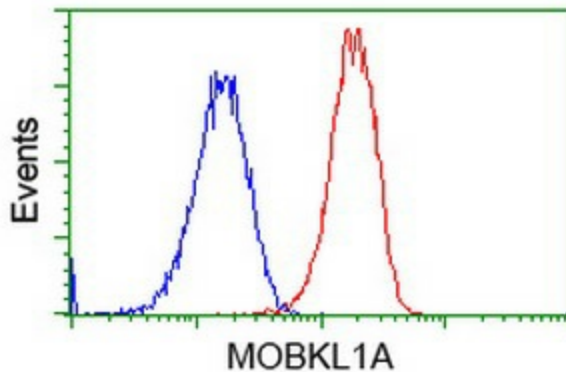
Product images:



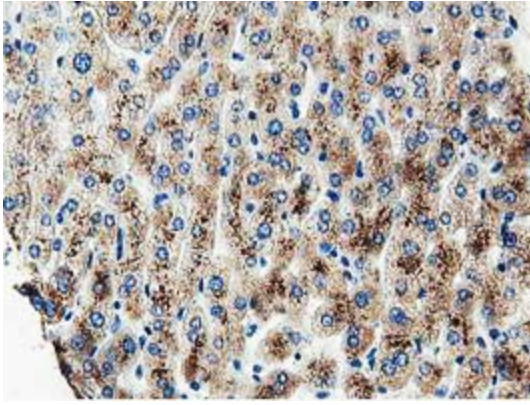
HEK293T cells were transfected with the pCMV6-ENTRY control (Cat# [PS100001], Left lane) or pCMV6-ENTRY MOBKL1A (Cat# [RC206337], Right lane) cDNA for 48 hrs and lysed. Equivalent amounts of cell lysates (5 ug per lane) were separated by SDS-PAGE and immunoblotted with anti-MOBKL1A(Cat# [TA501388]). Positive lysates [LY406621] (100ug) and [LC406621] (20ug) can be purchased separately from OriGene.



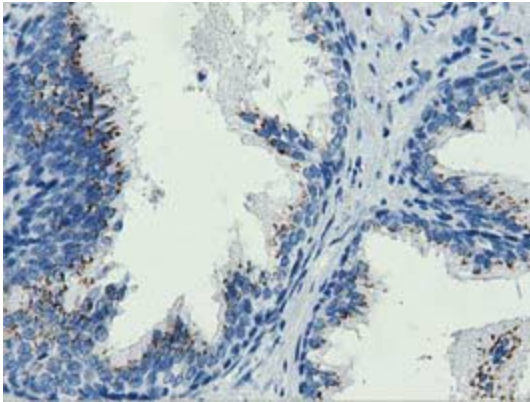
Flow cytometric Analysis of Jurkat cells, using anti-MOBKL1A antibody ([TA501388]), (Red), compared to a nonspecific negative control antibody (TA50011), (Blue).



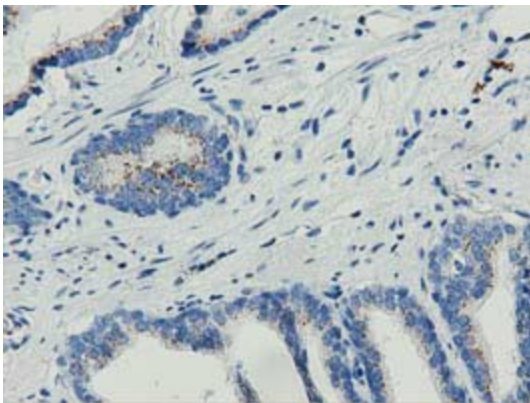
Flow cytometric Analysis of HeLa cells, using anti-MOBKL1A antibody ([TA501388]), (Red), compared to a nonspecific negative control antibody (TA50011), (Blue).



Immunohistochemical staining of paraffin-embedded Human liver tissue within the normal limits using anti-MOBKL1A mouse monoclonal antibody ([TA501388]) at 1:150 dilution.



Immunohistochemical staining of paraffin-embedded Human prostate tissue within the normal limits using anti-MOBKL1A mouse monoclonal antibody ([TA501388]) at 1:150 dilution.



Immunohistochemical staining of paraffin-embedded Carcinoma of Human prostate tissue using anti-MOBKL1A mouse monoclonal antibody ([TA501388]) at 1:150 dilution.