

## Product datasheet for **TA501388**

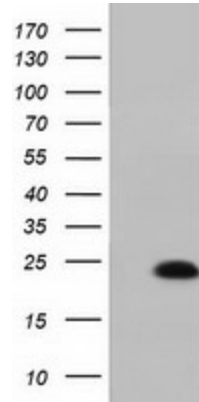
### **MOB4A (MOB1B) Mouse Monoclonal Antibody [Clone ID: OTI1H2]**

#### **Product data:**

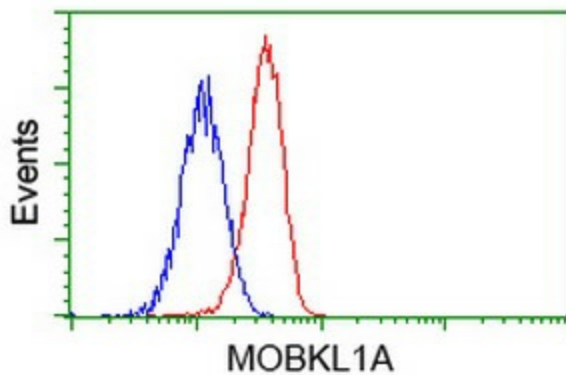
<b>Product Type:</b>	Primary Antibodies
<b>Clone Name:</b>	OTI1H2
<b>Applications:</b>	FC, IHC, WB
<b>Recommended Dilution:</b>	WB 1:500, FLOW 1:100, IHC 1:150
<b>Reactivity:</b>	Human, Mouse, Rat
<b>Host:</b>	Mouse
<b>Isotype:</b>	IgG2a
<b>Clonality:</b>	Monoclonal
<b>Immunogen:</b>	Full length human recombinant protein of human MOBKL1A(NP_775739) produced in HEK293T cell.
<b>Formulation:</b>	PBS (pH 7.3) containing 1% BSA, 50% glycerol and 0.02% sodium azide.
<b>Concentration:</b>	1 mg/ml
<b>Purification:</b>	Purified from mouse ascites fluids or tissue culture supernatant by affinity chromatography (protein A/G)
<b>Conjugation:</b>	Unconjugated
<b>Storage:</b>	Store at -20°C as received.
<b>Stability:</b>	Stable for 12 months from date of receipt.
<b>Predicted Protein Size:</b>	24.9 kDa
<b>Gene Name:</b>	MOB kinase activator 1B
<b>Database Link:</b>	<a href="#">NP_775739</a> <a href="#">Entrez Gene 68473 Mouse</a> <a href="#">Entrez Gene 360920 Rat</a> <a href="#">Entrez Gene 92597 Human</a> <a href="#">Q7L9L4</a>
<b>Background:</b>	The protein encoded by this gene is similar to the yeast Mob1 protein. Yeast Mob1 binds Mps1p, a protein kinase essential for spindle pole body duplication and mitotic checkpoint regulation. [provided by RefSeq]. COMPLETENESS: complete on the 3' end.
<b>Synonyms:</b>	MATS2; MOB4A; MOBKL1A



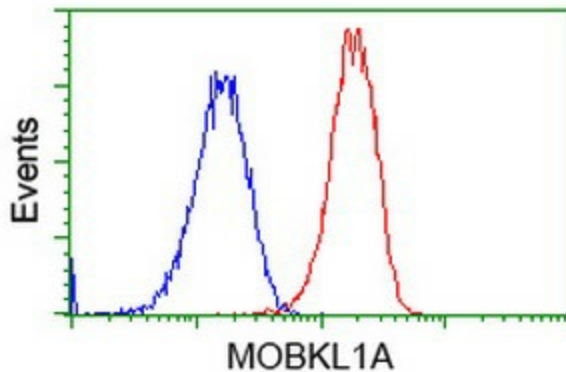
[View online »](#)

**Product images:**


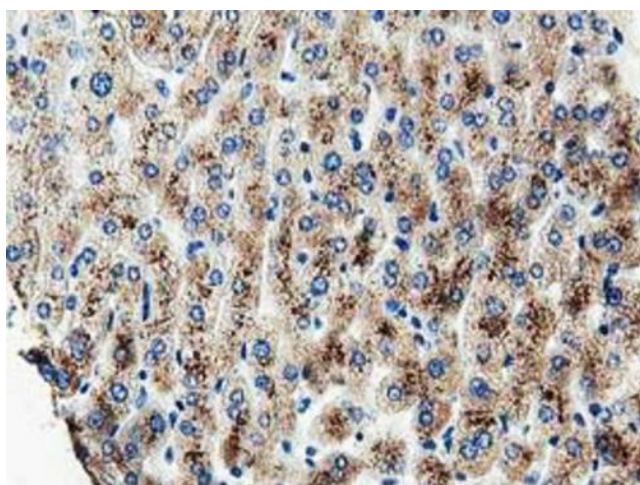
HEK293T cells were transfected with the pCMV6-ENTRY control (Cat# [PS100001], Left lane) or pCMV6-ENTRY MOBKL1A (Cat# [RC206337], Right lane) cDNA for 48 hrs and lysed. Equivalent amounts of cell lysates (5 ug per lane) were separated by SDS-PAGE and immunoblotted with anti-MOBKL1A (Cat# TA501388). Positive lysates [LY406621] (100ug) and [LC406621] (20ug) can be purchased separately from OriGene.



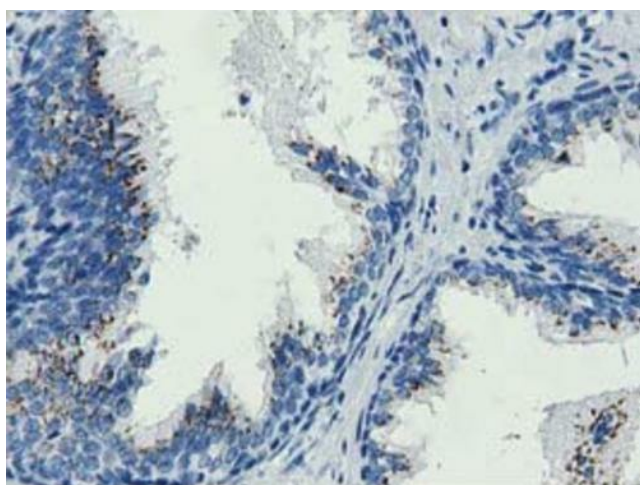
Flow cytometric Analysis of Jurkat cells, using anti-MOBKL1A antibody (TA501388), (Red), compared to a nonspecific negative control antibody (TA50011), (Blue).



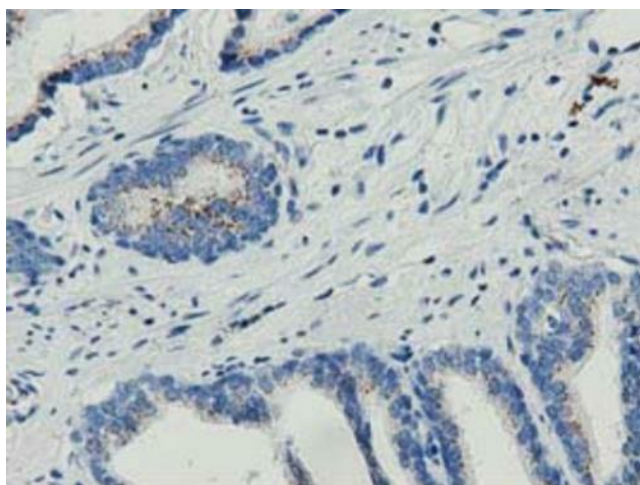
Flow cytometric Analysis of HeLa cells, using anti-MOBKL1A antibody (TA501388), (Red), compared to a nonspecific negative control antibody (TA50011), (Blue).



Immunohistochemical staining of paraffin-embedded Human liver tissue within the normal limits using anti-MOBKL1A mouse monoclonal antibody (TA501388) at 1:150 dilution. Heat-induced epitope retrieval by EDTA solution buffer pH 8.0 at 120°C for 3 min.



Immunohistochemical staining of paraffin-embedded Human prostate tissue within the normal limits using anti-MOBKL1A mouse monoclonal antibody (TA501388) at 1:150 dilution. Heat-induced epitope retrieval by EDTA solution buffer pH 8.0 at 120°C for 3 min.



Immunohistochemical staining of paraffin-embedded Carcinoma of Human prostate tissue using anti-MOBKL1A mouse monoclonal antibody (TA501388) at 1:150 dilution. Heat-induced epitope retrieval by EDTA solution buffer pH 8.0 at 120°C for 3 min.