

Product datasheet for **TA501386**

CFAP298 Mouse Monoclonal Antibody [Clone ID: OTI2B2]

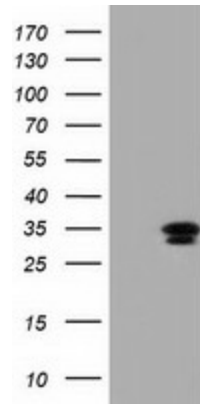
Product data:

Product Type:	Primary Antibodies
Clone Name:	OTI2B2
Applications:	FC, IF, WB
Recommended Dilution:	WB 1:2000, IF 1:100, FLOW 1:100
Reactivity:	Human
Host:	Mouse
Isotype:	IgG1
Clonality:	Monoclonal
Immunogen:	Full length human recombinant protein of human C21orf59 (NP_067077) produced in HEK293T cell.
Formulation:	PBS (pH 7.3) containing 1% BSA, 50% glycerol and 0.02% sodium azide.
Concentration:	0.54 mg/ml
Purification:	Purified from mouse ascites fluids or tissue culture supernatant by affinity chromatography (protein A/G)
Storage:	Store at -20°C as received.
Stability:	Stable for 12 months from date of receipt.
Predicted Protein Size:	33.0 kDa
Gene Name:	cilia and flagella associated protein 298
Database Link:	NP_067077 Entrez Gene 56683 Human
Synonyms:	C21orf48; CILD26; FBB18

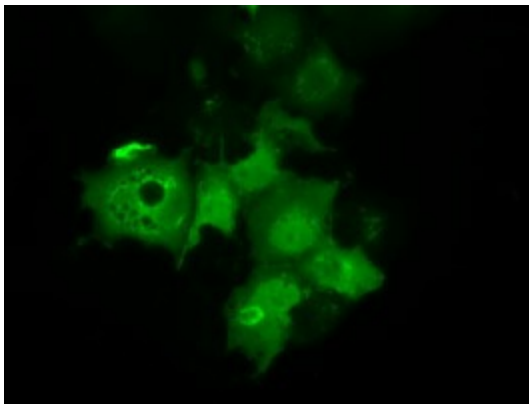


[View online »](#)

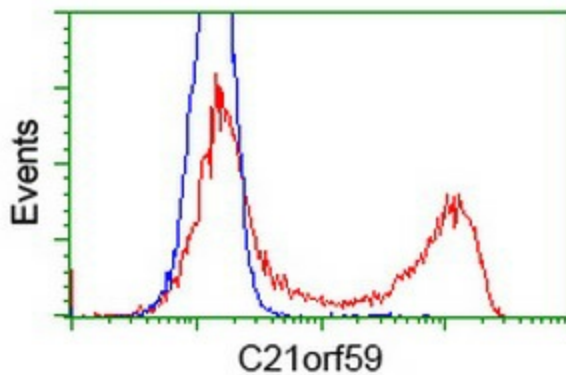
Product images:



HEK293T cells were transfected with the pCMV6-ENTRY control (Left lane) or pCMV6-ENTRY C21orf59 ([RC200169], Right lane) cDNA for 48 hrs and lysed. Equivalent amounts of cell lysates (5 ug per lane) were separated by SDS-PAGE and immunoblotted with anti-C21orf59. Positive lysates [LY402864] (100ug) and [LC402864] (20ug) can be purchased separately from OriGene.



Anti-C21orf59 mouse monoclonal antibody (TA501386) immunofluorescent staining of COS7 cells transiently transfected by pCMV6-ENTRY C21orf59 ([RC200169]).



HEK293T cells transfected with either [RC200169] overexpress plasmid (Red) or empty vector control plasmid (Blue) were immunostained by anti-C21orf59 antibody (TA501386), and then analyzed by flow cytometry.

